



MLS 6614613 Land

**\$125,000**

1.4 Acres  
Raw Land

TBD Nodaway Drive  
Detroit Lakes MN 56501

Status: Active

**Description:**

This large surveyed county lot sits on the edge of the city limits of Detroit Lakes. This buildable lot covers 1.40 acres on two parcels and is 178' wide and 346' deep. This property is suitable for a single family residence or a twin-home. No Covenants.

**Additional Details:**

Lot Acres	1.4
Lot Dimensions	178x346
School District	22
Taxes	(unreported)
Taxes with Assessments	\$80
Tax Year	2024

**Additional Features:**

**Driving Directions:**

From DL take West Lake Drive to Long Bridge Road, turn left and follow to Nodaway Dr, turn right and follow to property on the East side.



Listed By:  
Counselor Realty Detroit Lakes

Affinity Real Estate Inc. participates in the Regional Multiple Listing Service of Minnesota, Inc Broker Reciprocity (sm) program, allowing us to display other broker's listings on our website. All properties are subject to prior sale, change or withdrawal.



Call Affinity Real Estate

**218-237-3333**

[info@affinityrealestate.com](mailto:info@affinityrealestate.com)



Affinity Real Estate - 600 Park Avenue South - Park Rapids MN 56470





website: [www.AffinityRealEstate.com](http://www.AffinityRealEstate.com) | email: [info@affinityrealestate.com](mailto:info@affinityrealestate.com) | office: 218-237-3333 | fax:218-237-3377



**\$125,000**  
MLS 6614613 Land  
TBD Nodaway Drive  
Detroit Lakes MN 56501



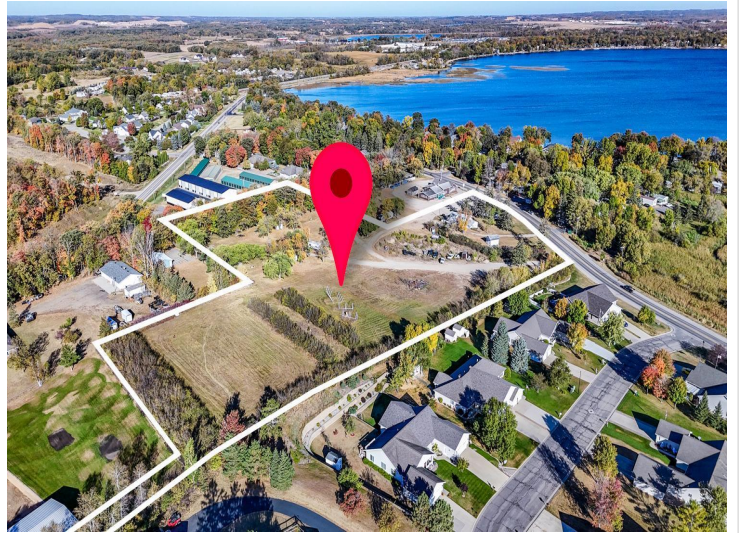


website: [www.AffinityRealEstate.com](http://www.AffinityRealEstate.com) | email: [info@affinityrealestate.com](mailto:info@affinityrealestate.com) | office: 218-237-3333 | fax:218-237-3377



**\$125,000**  
MLS 6614613 Land  
TBD Nodaway Drive  
Detroit Lakes MN 56501





website: [www.AffinityRealEstate.com](http://www.AffinityRealEstate.com) | email: [info@affinityrealestate.com](mailto:info@affinityrealestate.com) | office: 218-237-3333 | fax:218-237-3377



**\$125,000**  
MLS 6614613 Land  
TBD Nodaway Drive  
Detroit Lakes MN 56501