



MLS 6614634 Residential

\$1

1,412 sq ft
4 bedrooms
1 baths

22768 Brill Avenue
Park Rapids MN 56470

Status: Pending

Description:

Bid your price on this rural Park Rapids/Osage property offered through online only auction in 2 parcels. Lot 1 includes a 1.5 story 4-bedroom 1 bath home needing work and updates, a 28x40 detached garage, a 36x80 barn with hay loft, other sheds, and a beautiful 3.88-acre lot. Lot 2 includes 55 acres of mostly wooded land great for hunting, building, pasture, and more! A mixture of high and lowland, areas for food plots, a variety of trees, and nice building locations. Surrounded by farmland.

Auction opens Friday, Oct. 25th and closes Tuesday, Oct. 29th at 12pm. Visit out auction site for online bidding information. Located 7 miles west of Park Rapids and 3.5 miles east of Osage.

Additional Details:

Year Built	1910
Lot Acres	58.9
Lot Dimensions	58.9 acres
Garage Stalls	2
School District	309
Taxes	\$1,168
Taxes with Assessments	\$1,168
Tax Year	2024

Additional Features:

Basement: Concrete **Fuel:** Propane **Garage:** 2 **Heat:** Forced Air **Sewer:** Private Sewer **Water:** Drilled, Private **Air Conditioning:** None

Driving Directions:

From Park Rapids go west on Hwy 34 for 6 miles, turn left and head north on Brill Ave for 1 mile to the property.



Listed By:
Counselor Realty Detroit Lakes

Affinity Real Estate Inc. participates in the Regional Multiple Listing Service of Minnesota, Inc Broker Reciprocity (sm) program, allowing us to display other broker's listings on our website. All properties are subject to prior sale, change or withdrawal.



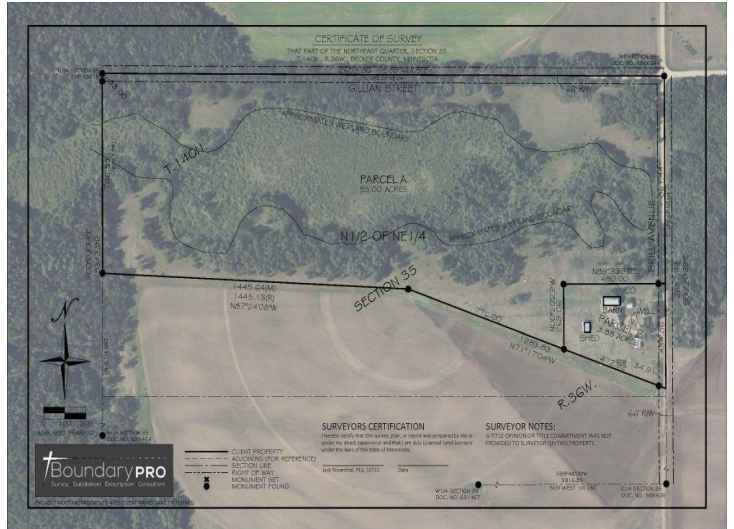
Call Affinity Real Estate

218-237-3333

info@affinityrealestate.com



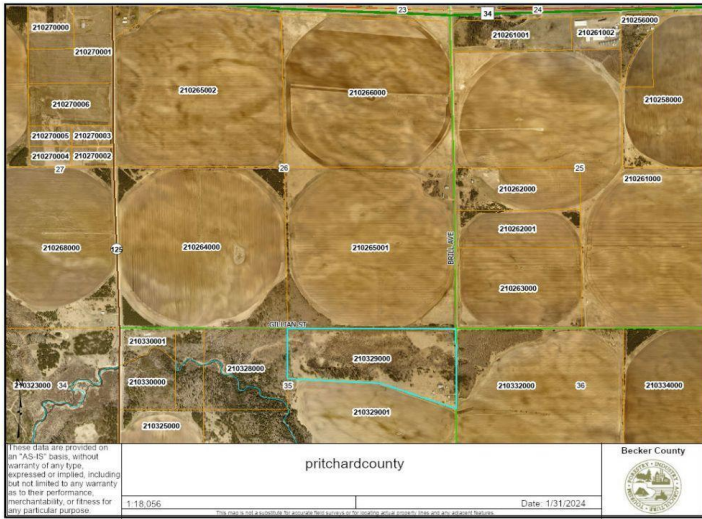
Affinity Real Estate - 600 Park Avenue South - Park Rapids MN 56470



website: www.AffinityRealEstate.com | email: info@affinityrealestate.com | office: 218-237-3333 | fax: 218-237-3377



\$1
 MLS 6614634 Residential
 22768 Brill Avenue
 Park Rapids MN 56470



website: www.AffinityRealEstate.com | email: info@affinityrealestate.com | office: 218-237-3333 | fax: 218-237-3377



\$1
 MLS 6614634 Residential
 22768 Brill Avenue
 Park Rapids MN 56470



website: www.AffinityRealEstate.com | email: info@affinityrealestate.com | office: 218-237-3333 | fax:218-237-3377



\$1
MLS 6614634 Residential
22768 Brill Avenue
Park Rapids MN 56470



website: www.AffinityRealEstate.com | email: info@affinityrealestate.com | office: 218-237-3333 | fax:218-237-3377



\$1
MLS 6614634 Residential
22768 Brill Avenue
Park Rapids MN 56470



website: www.AffinityRealEstate.com | email: info@affinityrealestate.com | office: 218-237-3333 | fax: 218-237-3377

Affinity
REAL ESTATE INC

\$1
MLS 6614634 Residential
22768 Brill Avenue
Park Rapids MN 56470



website: www.AffinityRealEstate.com | email: info@affinityrealestate.com | office: 218-237-3333 | fax:218-237-3377

Affinity
REAL ESTATE INC

\$1
MLS 6614634 Residential
22768 Brill Avenue
Park Rapids MN 56470



website: www.AffinityRealEstate.com | email: info@affinityrealestate.com | office: 218-237-3333 | fax: 218-237-3377

Affinity
REAL ESTATE INC

\$1
MLS 6614634 Residential
22768 Brill Avenue
Park Rapids MN 56470



website: www.AffinityRealEstate.com | email: info@affinityrealestate.com | office: 218-237-3333 | fax:218-237-3377



\$1
MLS 6614634 Residential
22768 Brill Avenue
Park Rapids MN 56470



website: www.AffinityRealEstate.com | email: info@affinityrealestate.com | office: 218-237-3333 | fax:218-237-3377



\$1
MLS 6614634 Residential
22768 Brill Avenue
Park Rapids MN 56470