



MLS 6614780 Lake Home

**\$699,000**

2,588 sq ft  
4 bedrooms  
2 baths

24996 Horseshoe Road  
Akeley MN 56433

Waterfront: Eleventh Crow Wing

Status: Active

#### Description:

Don't miss your chance to own this incredible sportsman's paradise! Set on 20± acres, this property offers outstanding hunting opportunities and an impressive 685± feet of some of the most beautiful shoreline you'll find on the highly sought-after Eleventh Crow Wing Lake. Explore the gently rolling hills and manicured trails, where you'll likely encounter deer, grouse, turkey, and even the occasional bear or moose. The landscape is dotted with majestic white pines, birch, oak, and beautiful maple trees. The shoreline is unreal, and honestly, the nicest I have ever seen. The spring-fed lake produces crystal-clear water with a hard sand and rock bottom that's perfect for swimming and tubing. The DNR stocks the lake with walleye fingerlings every other year and has mentioned the lake is probably in the top 10 walleye lakes in the state for trophy-size fish. Pulling out a 30" walleye is not uncommon! Eleventh Crow Wing Lake spans approximately 750 acres and boasts remarkable water clarity, averaging 13 feet. The spacious 4-bedroom, 2-bath home has been updated with freshly painted interiors, gorgeous slate flooring in the entry and laundry areas, and roomy custom cabinetry for all your storage needs. If you need extra guest space, the 16'x16' lakeside bunkhouse provides that with beautiful views of the water. One of the highlights of the property is the astounding 50'x100' commercial-grade Red Iron steel building with 16' sidewalls, heat, a partially concrete floor, and dual electric panels (200 amp & 100 amp). You'll find ample space for all of your toys, or rent it out for added income. Numerous area attractions include the Paul Bunyan State Forest with ATV/Snowmobile trails, Heartland Bicycle Trail, Itasca State Forest, and the Chippewa National Forest for hiking and cross-country ski trails. With too many features to list, this is truly a property that needs to be seen to be fully appreciated!

#### Additional Details:

Year Built	1986
Lot Acres	20.05
Lot Dimensions	irregular
Garage Stalls	1
School District	113
Taxes	\$5,040
Taxes with Assessments	\$5,250
Tax Year	2024

Listed By: **Broker Reciprocity**  
Affinity Real Estate Inc. participates in the Regional Multiple Listing Service of Minnesota, Inc Broker Reciprocity (sm) program, allowing us to display other broker's listings on our website. All properties are subject to prior sale, change or withdrawal.  
From Akeley, MN 34E 1.1 mile, left on Horseshoe Rd 1.2 miles to property.



**Call Affinity Real Estate**

**218-237-3333**

**info@affinityrealestate.com**



**Affinity Real Estate - 600 Park Avenue South - Park Rapids MN 56470**





website: [www.AffinityRealEstate.com](http://www.AffinityRealEstate.com) | email: [info@affinityrealestate.com](mailto:info@affinityrealestate.com) | office: 218-237-3333 | fax: 218-237-3377



**\$699,000**

MLS 6614780 Lake Home  
24996 Horseshoe Road  
Akeley MN 56433





website: [www.AffinityRealEstate.com](http://www.AffinityRealEstate.com) | email: [info@affinityrealestate.com](mailto:info@affinityrealestate.com) | office: 218-237-3333 | fax: 218-237-3377

**Affinity**  
REAL ESTATE INC

**\$699,000**

MLS 6614780 Lake Home  
24996 Horseshoe Road  
Akeley MN 56433





website: [www.AffinityRealEstate.com](http://www.AffinityRealEstate.com) | email: [info@affinityrealestate.com](mailto:info@affinityrealestate.com) | office: 218-237-3333 | fax: 218-237-3377



**\$699,000**  
 MLS 6614780 Lake Home  
 24996 Horseshoe Road  
 Akeley MN 56433





website: [www.AffinityRealEstate.com](http://www.AffinityRealEstate.com) | email: [info@affinityrealestate.com](mailto:info@affinityrealestate.com) | office: 218-237-3333 | fax: 218-237-3377



**\$699,000**  
 MLS 6614780 Lake Home  
 24996 Horseshoe Road  
 Akeley MN 56433





website: [www.AffinityRealEstate.com](http://www.AffinityRealEstate.com) | email: [info@affinityrealestate.com](mailto:info@affinityrealestate.com) | office: 218-237-3333 | fax: 218-237-3377



**\$699,000**

MLS 6614780 Lake Home  
24996 Horseshoe Road  
Akeley MN 56433



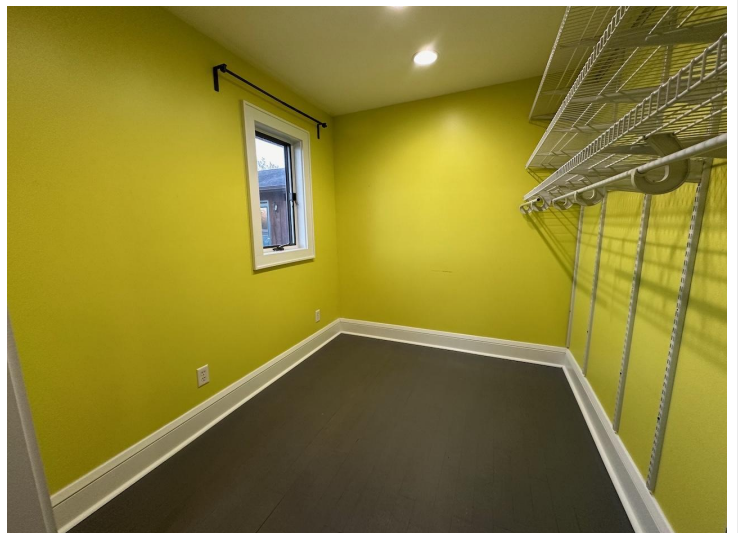
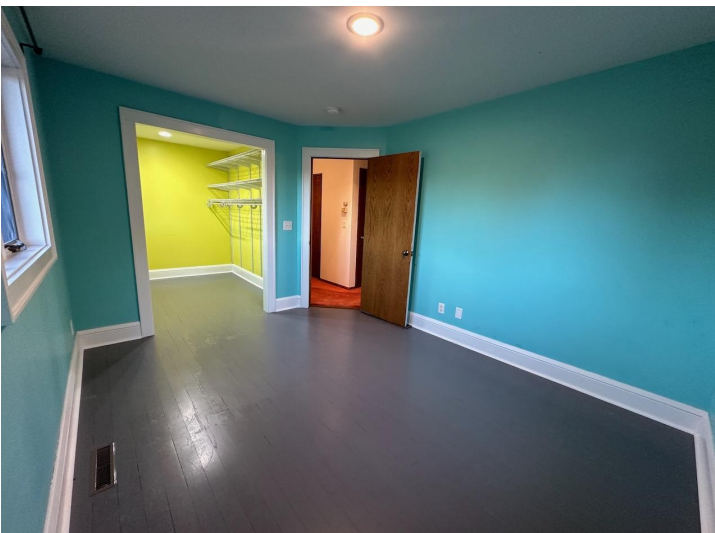


website: [www.AffinityRealEstate.com](http://www.AffinityRealEstate.com) | email: [info@affinityrealestate.com](mailto:info@affinityrealestate.com) | office: 218-237-3333 | fax: 218-237-3377



**\$699,000**  
 MLS 6614780 Lake Home  
 24996 Horseshoe Road  
 Akeley MN 56433





website: [www.AffinityRealEstate.com](http://www.AffinityRealEstate.com) | email: [info@affinityrealestate.com](mailto:info@affinityrealestate.com) | office: 218-237-3333 | fax: 218-237-3377



**\$699,000**  
MLS 6614780 Lake Home  
24996 Horseshoe Road  
Akeley MN 56433





website: [www.AffinityRealEstate.com](http://www.AffinityRealEstate.com) | email: [info@affinityrealestate.com](mailto:info@affinityrealestate.com) | office: 218-237-3333 | fax: 218-237-3377



**\$699,000**  
 MLS 6614780 Lake Home  
 24996 Horseshoe Road  
 Akeley MN 56433





website: [www.AffinityRealEstate.com](http://www.AffinityRealEstate.com) | email: [info@affinityrealestate.com](mailto:info@affinityrealestate.com) | office: 218-237-3333 | fax: 218-237-3377



**\$699,000**  
 MLS 6614780 Lake Home  
 24996 Horseshoe Road  
 Akeley MN 56433