



MLS 6614910 Land

**\$42,500**

2.85 Acres  
Raw Land

TBD\* 20th Avenue  
Backus MN 56435

Status: Active

**Description:**

Ponto Twp.- In the heart of lake country is this wooded 2.85 build site ideal for home/shouse/storage building. The lot is surveyed with a current and future septic site. Power and phone run on the west side of the lot. Take a look at this hard-to-find tract.

**Additional Details:**

Lot Acres	2.85
Lot Dimensions	314x400x305x400
School District	2174
Taxes	\$34
Taxes with Assessments	\$34
Tax Year	2024

**Additional Features:**

**Driving Directions:**

From the intersection of Hwys 84/87- go west 1.5 miles on 87 then left on 20th Avenue NW for .4 mile to sign on left.



Listed By:  
Heartland Real Estate

Affinity Real Estate Inc. participates in the Regional Multiple Listing Service of Minnesota, Inc Broker Reciprocity (sm) program, allowing us to display other broker's listings on our website. All properties are subject to prior sale, change or withdrawal.



Call Affinity Real Estate

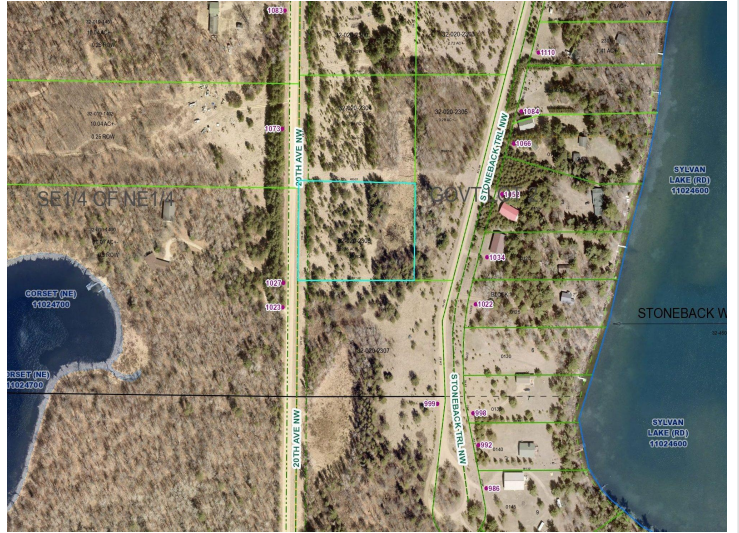
**218-237-3333**

[info@affinityrealestate.com](mailto:info@affinityrealestate.com)



Affinity Real Estate - 600 Park Avenue South - Park Rapids MN 56470





website: [www.AffinityRealEstate.com](http://www.AffinityRealEstate.com) | email: [info@affinityrealestate.com](mailto:info@affinityrealestate.com) | office: 218-237-3333 | fax: 218-237-3377



**\$42,500**  
MLS 6614910 Land  
TBD\* 20th Avenue  
Backus MN 56435