



MLS 6615507 Land

**\$59,000**

2.79 Acres  
Other

xxx 447th av  
Ottertail MN 56571

Status: Pending

**Description:**

Parcel A, Beautiful 2.7 acre vacant lot currently being surveyed off from large parcel between Rush lake and Buchanan. Build your country home or your storage shed. Parcel B and Parcel C are also available

**Additional Details:**

Lot Acres	2.79
Lot Dimensions	irregular
School District	549
Taxes	\$728
Taxes with Assessments	\$728
Tax Year	2024

**Additional Features:**

**Driving Directions:**

From Ottertail take Hwy 78 north, right on Hwy 54. Left on 447th ave.



Listed By:  
Boll Realty

Affinity Real Estate Inc. participates in the Regional Multiple Listing Service of Minnesota, Inc Broker Reciprocity (sm) program, allowing us to display other broker's listings on our website. All properties are subject to prior sale, change or withdrawal.



Call Affinity Real Estate

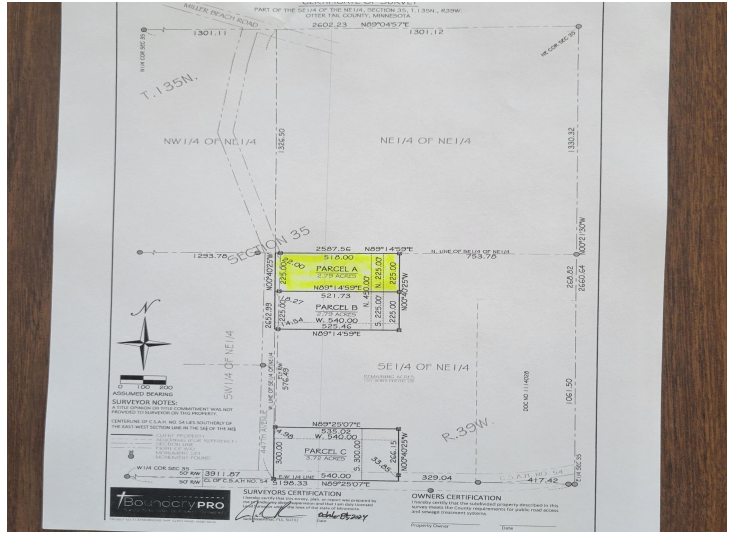
**218-237-3333**

[info@affinityrealestate.com](mailto:info@affinityrealestate.com)



Affinity Real Estate - 600 Park Avenue South - Park Rapids MN 56470





website: [www.AffinityRealEstate.com](http://www.AffinityRealEstate.com) | email: [info@affinityrealestate.com](mailto:info@affinityrealestate.com) | office: 218-237-3333 | fax:218-237-3377



**\$59,000**  
 MLS 6615507 Land  
 xxx 447th av  
 Ottertail MN 56571





website: [www.AffinityRealEstate.com](http://www.AffinityRealEstate.com) | email: [info@affinityrealestate.com](mailto:info@affinityrealestate.com) | office: 218-237-3333 | fax:218-237-3377



**\$59,000**  
MLS 6615507 Land  
xxx 447th av  
Ottertail MN 56571