



MLS 6615593 Land

**\$69,500**

10 Acres  
Raw Land

TBD\* 32nd Avenue  
Backus MN 56435

Status: Pending

**Description:**

Pine River Twp.- This heavily wooded 10 acres has rolling terrain and overlooks a small pond on its northeast corner. The site is a prime building tract and also has great hunting potential.

**Additional Details:**

Lot Acres	10
Lot Dimensions	330x1320
School District	2174
Taxes	\$122
Taxes with Assessments	\$122
Tax Year	2024

**Additional Features:**

**Driving Directions:**

4 miles north of Pine River on #371 to 14th St. SW (@ Mildred Chapel) then right on 14th for .7 mile merging into 32nd Avenue SW, continue north on 32nd for 2 miles to property on right.



Listed By:  
Heartland Real Estate

Affinity Real Estate Inc. participates in the Regional Multiple Listing Service of Minnesota, Inc Broker Reciprocity (sm) program, allowing us to display other broker's listings on our website. All properties are subject to prior sale, change or withdrawal.



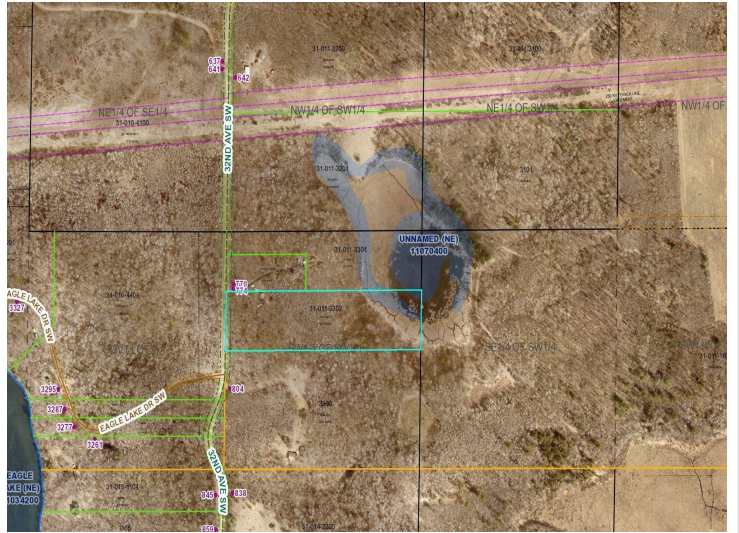
Call Affinity Real Estate

**218-237-3333**

[info@affinityrealestate.com](mailto:info@affinityrealestate.com)



Affinity Real Estate - 600 Park Avenue South - Park Rapids MN 56470



website: [www.AffinityRealEstate.com](http://www.AffinityRealEstate.com) | email: [info@affinityrealestate.com](mailto:info@affinityrealestate.com) | office: 218-237-3333 | fax:218-237-3377



**\$69,500**  
MLS 6615593 Land  
TBD\* 32nd Avenue  
Backus MN 56435