



MLS 6615911 Residential

\$345,000

2,862 sq ft
4 bedrooms
2 baths

779 Lazy Ike Lane
Bemidji MN 56601

Status: Active

Description:

This spacious 4+ bedroom home offers a peaceful retreat located just 10 miles from both Bemidji and Cass Lake, situated on a private, wooded 5 acre lot on a quiet dead-end road. Enjoy the "up north" feel with nearby lakes and rivers for outdoor enthusiasts. Watch sunrises and sunsets on your large front deck. With tons of natural light you can see all the beauty nature has to offer right out your windows. Main floor features a large tiled entry/mud room, main bedroom with walk through bathroom, large living room, open concept dining and kitchen with double ovens and an island, 2nd bedroom, office, and bathroom with laundry. Enjoy the feel of natural wood floors and plenty of built in shelves. In the partially finished walk out basement you'll find 2 additional bedrooms, a flex room for hobbies or storage, utility room, and a large family room with a wood stove and tons of cupboard space for all of your storage needs.

This home is perfect for those seeking privacy, nature, and easy access to nearby amenities. Check out this hidden Gem!

Additional Details:

Year Built	2004
Lot Acres	5.01
Lot Dimensions	330x667x330x675
Garage Stalls	3
School District	31
Taxes	\$2,628
Taxes with Assessments	\$2,628
Tax Year	2023

Additional Features:

Basement: Daylight/Lookout Windows, Egress Window(s), Full, Partially Finished, Walkout, Wood **Fuel:** Propane, Wood **Garage:** 3 **Heat:** Forced Air, Wood Stove **Sewer:** Private Sewer **Water:** Private **Air Conditioning:** None

Driving Directions:

Follow Roosevelt Rd SE 8 miles to Lazy Ike Lane SE. Take a left. Follow to fire #779 on left.



Listed By:
Headwaters Realty Services LLC

Affinity Real Estate Inc. participates in the Regional Multiple Listing Service of Minnesota, Inc Broker Reciprocity (sm) program, allowing us to display other broker's listings on our website. All properties are subject to prior sale, change or withdrawal.



Call Affinity Real Estate

218-237-3333

info@affinityrealestate.com



Affinity Real Estate - 600 Park Avenue South - Park Rapids MN 56470



website: www.AffinityRealEstate.com | email: info@affinityrealestate.com | office: 218-237-3333 | fax:218-237-3377



\$345,000
MLS 6615911 Residential
779 Lazy Ike Lane
Bemidji MN 56601



website: www.AffinityRealEstate.com | email: info@affinityrealestate.com | office: 218-237-3333 | fax:218-237-3377



\$345,000
MLS 6615911 Residential
779 Lazy Ike Lane
Bemidji MN 56601



website: www.AffinityRealEstate.com | email: info@affinityrealestate.com | office: 218-237-3333 | fax: 218-237-3377

Affinity
REAL ESTATE INC

\$345,000
MLS 6615911 Residential
779 Lazy Ike Lane
Bemidji MN 56601



website: www.AffinityRealEstate.com | email: info@affinityrealestate.com | office: 218-237-3333 | fax:218-237-3377



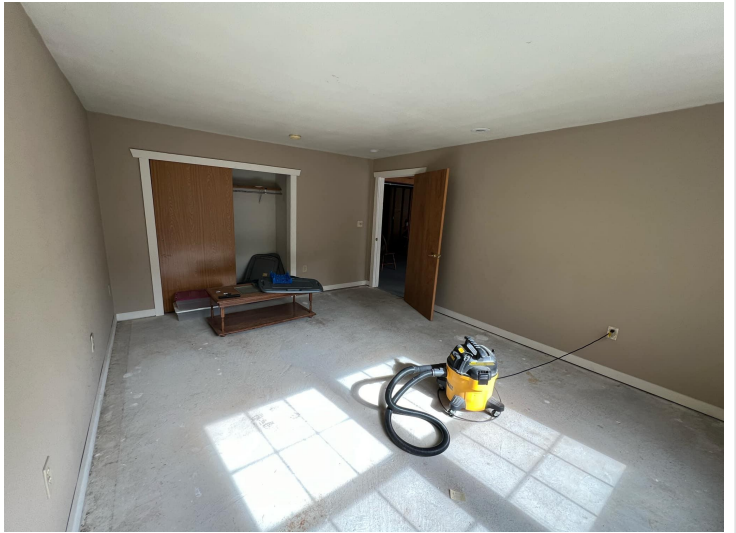
\$345,000
MLS 6615911 Residential
779 Lazy Ike Lane
Bemidji MN 56601



website: www.AffinityRealEstate.com | email: info@affinityrealestate.com | office: 218-237-3333 | fax:218-237-3377



\$345,000
MLS 6615911 Residential
779 Lazy Ike Lane
Bemidji MN 56601



website: www.AffinityRealEstate.com | email: info@affinityrealestate.com | office: 218-237-3333 | fax:218-237-3377

Affinity
REAL ESTATE INC

\$345,000
MLS 6615911 Residential
779 Lazy Ike Lane
Bemidji MN 56601



website: www.AffinityRealEstate.com | email: info@affinityrealestate.com | office: 218-237-3333 | fax:218-237-3377



\$345,000
MLS 6615911 Residential
779 Lazy Ike Lane
Bemidji MN 56601