



MLS 6616123 Lake Land

\$475,000

Description:

Large surveyed lot with incredible views of the lakes area and 30' of lake frontage on Curfman Lake. Curfman Lake (aka Dead Shot Bay) is directly connected to Detroit Lake and all of its amenities and fun! This lot offers 2.9 acres and privacy unlike any other lot this close to the city limits of Detroit Lakes and on the water. City water and sewer is not directly available but is in close proximity if so desired. Proposed easement with access from Long Bridge Road.

Additional Details:

Lot Acres	2.9
Lot Dimensions	275x400x30, est.
School District	22
Taxes	\$76
Taxes with Assessments	\$228
Tax Year	2024

Additional Features:

Driving Directions:

From Detroit Lakes, take West Lake Drive to Long Bridge Rd, turn left and follow to the Shorewood Pub. Access to lot is on East side of the property.



Listed By:
Counselor Realty Detroit Lakes

Affinity Real Estate Inc. participates in the Regional Multiple Listing Service of Minnesota, Inc Broker Reciprocity (sm) program, allowing us to display other broker's listings on our website. All properties are subject to prior sale, change or withdrawal.



Call Affinity Real Estate

218-237-3333

info@affinityrealestate.com



Affinity Real Estate - 600 Park Avenue South - Park Rapids MN 56470



website: www.AffinityRealEstate.com | email: info@affinityrealestate.com | office: 218-237-3333 | fax: 218-237-3377



\$475,000

MLS 6616123 Lake Land
TBD Long Bridge Road
Detroit Lakes MN 56501

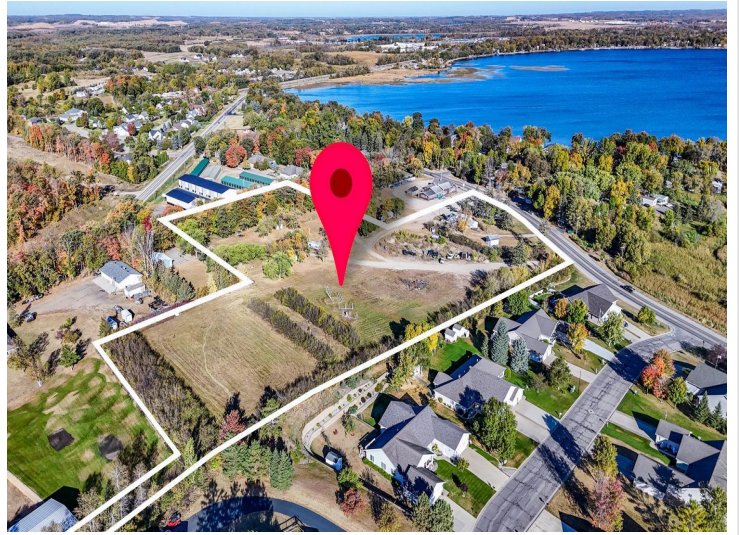


website: www.AffinityRealEstate.com | email: info@affinityrealestate.com | office: 218-237-3333 | fax: 218-237-3377



\$475,000

MLS 6616123 Lake Land
TBD Long Bridge Road
Detroit Lakes MN 56501



website: www.AffinityRealEstate.com | email: info@affinityrealestate.com | office: 218-237-3333 | fax: 218-237-3377

Affinity
REAL ESTATE INC

\$475,000

MLS 6616123 Lake Land
TBD Long Bridge Road
Detroit Lakes MN 56501



website: www.AffinityRealEstate.com | email: info@affinityrealestate.com | office: 218-237-3333 | fax:218-237-3377



\$475,000

MLS 6616123 Lake Land
TBD Long Bridge Road
Detroit Lakes MN 56501