



MLS 6616790 Residential

\$549,900

1,525 sq ft
2 bedrooms
1 baths

28021 Co. 4
Park Rapids MN 56470

Status: Active

Description:

Ready to leave the hustle and bustle behind? Come up North to a cozy little home and own your own town. This 2 bedroom/1bath cottage is attached to the main store that also includes a popular cafe and vintage bar. Also includes a large storage facility, motel and small but always booked RV Park. Emmaville has been a hub for this areas amazing recreational opportunities for 100 years and will for the next 100 to come. A once in a lifetime opportunity to start fresh in "The Biggest Little Town In The World"! Check out the video.

Additional Details:

Year Built	1977
Lot Acres	4
Lot Dimensions	400 x 170
Garage Stalls	4
School District	309
Taxes	\$5,704
Taxes with Assessments	\$7,684
Tax Year	2024

Additional Features:

Basement: Block **Fuel:** Electric, Propane **Garage:** 4 **Heat:** Baseboard, Dual, Forced Air, Fireplace(s), Space Heater **Sewer:** Tank with Drainage Field **Water:** Submersible - 4 Inch, Drilled **Air Conditioning:** Central Air, Window Unit(s)

Driving Directions:

From Park Rapids go East 1 mile, turn North on Cty Rd 4, proceed 11 miles to property on your left.



Listed By:
Affinity Real Estate Inc.

Affinity Real Estate Inc. participates in the Regional Multiple Listing Service of Minnesota, Inc Broker Reciprocity (sm) program, allowing us to display other broker's listings on our website. All properties are subject to prior sale, change or withdrawal.



Call Affinity Real Estate

218-237-3333

info@affinityrealestate.com



Affinity Real Estate - 600 Park Avenue South - Park Rapids MN 56470



website: www.AffinityRealEstate.com | email: info@affinityrealestate.com | office: 218-237-3333 | fax: 218-237-3377

Affinity
REAL ESTATE INC

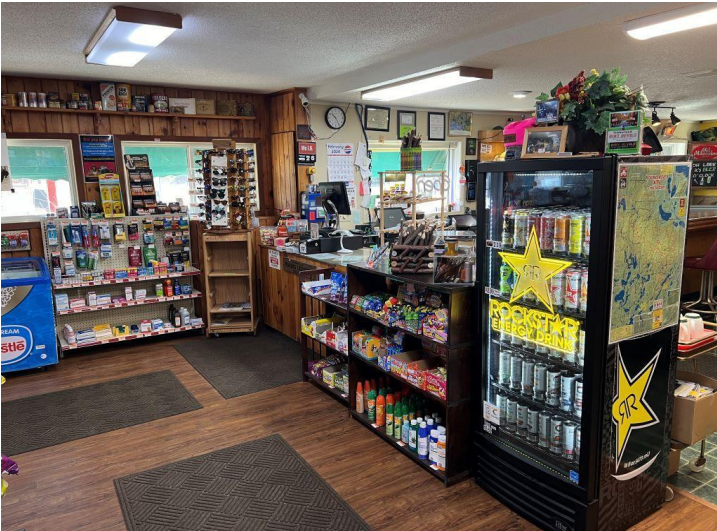
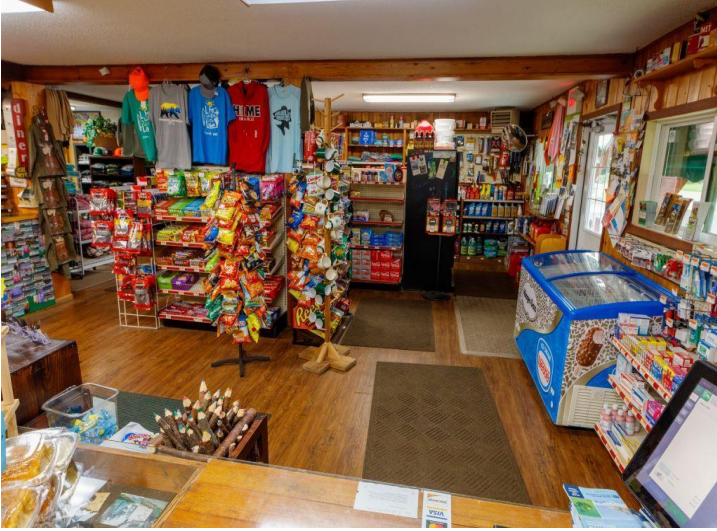
\$549,900
MLS 6616790 Residential
28021 Co. 4
Park Rapids MN 56470



website: www.AffinityRealEstate.com | email: info@affinityrealestate.com | office: 218-237-3333 | fax:218-237-3377

Affinity
REAL ESTATE INC

\$549,900
MLS 6616790 Residential
28021 Co. 4
Park Rapids MN 56470



website: www.AffinityRealEstate.com | email: info@affinityrealestate.com | office: 218-237-3333 | fax: 218-237-3377

Affinity
REAL ESTATE INC

\$549,900
MLS 6616790 Residential
28021 Co. 4
Park Rapids MN 56470



website: www.AffinityRealEstate.com | email: info@affinityrealestate.com | office: 218-237-3333 | fax: 218-237-3377

Affinity
REAL ESTATE INC

\$549,900
MLS 6616790 Residential
28021 Co. 4
Park Rapids MN 56470