



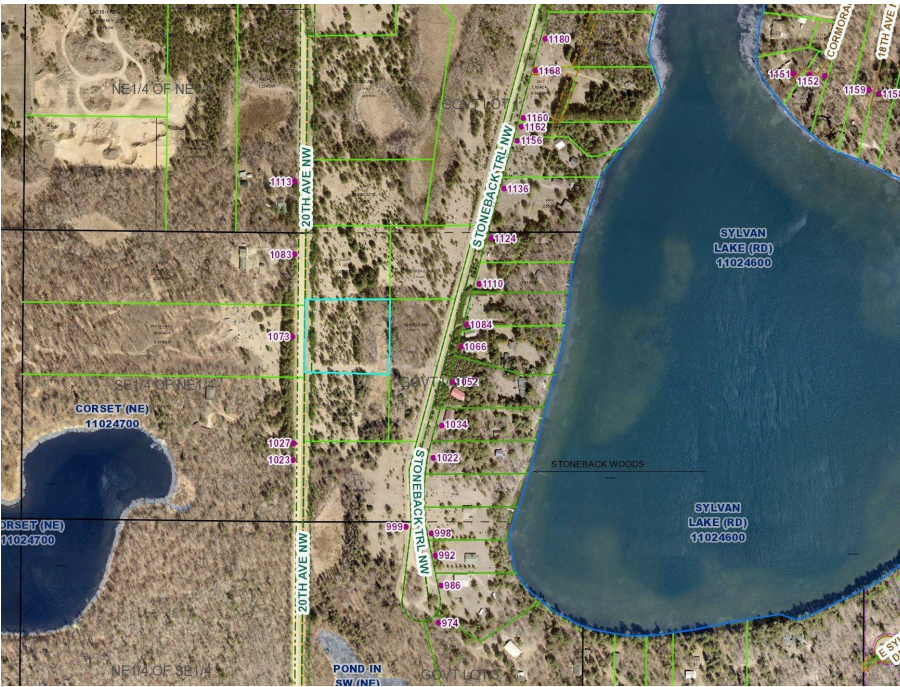
MLS 6616791 Land

\$44,500

3.08 Acres
Raw Land

TBD*** 20th Avenue
Backus MN 56435

Status: Active



Description:

Ponto Twp.- In the heart of lake country is this wooded 3.08 build site ideal for home/shouse/storage building. The lot is surveyed with a current and future septic site. Power and phone run on the west side of the lot. Take a look at this hard-to-find tract.

Additional Details:

Lot Acres	3.08
Lot Dimensions	330x400x340x255
School District	2174
Taxes	\$36
Taxes with Assessments	\$36
Tax Year	2024

Additional Features:

Driving Directions:

From the intersection of Hwys 84/87- go west 1.5 miles on 87 then left on 20th Avenue NW for .4 mile to sign on left.



Listed By:
Heartland Real Estate

Affinity Real Estate Inc. participates in the Regional Multiple Listing Service of Minnesota, Inc Broker Reciprocity (sm) program, allowing us to display other broker's listings on our website. All properties are subject to prior sale, change or withdrawal.



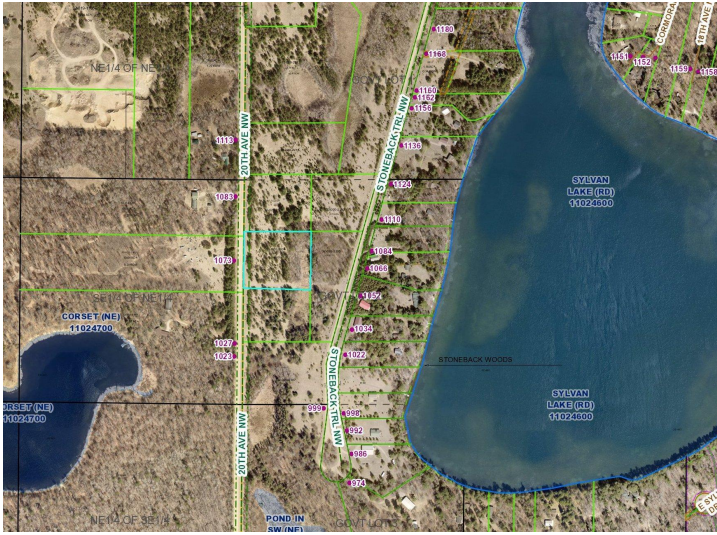
Call Affinity Real Estate

218-237-3333

info@affinityrealestate.com



Affinity Real Estate - 600 Park Avenue South - Park Rapids MN 56470



website: www.AffinityRealEstate.com | email: info@affinityrealestate.com | office: 218-237-3333 | fax:218-237-3377



\$44,500

MLS 6616791 Land
TBD*** 20th Avenue
Backus MN 56435