



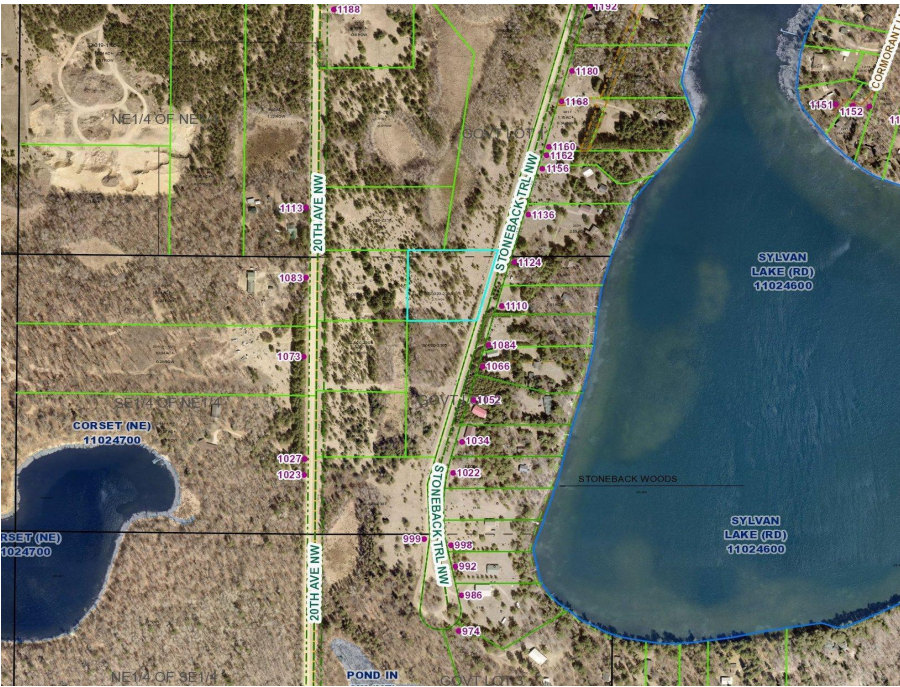
MLS 6616811 Land

\$46,500

2.72 Acres
Raw Land

TBD* Stoneback Trail
Backus MN 56435

Status: Pending



Description:

Ponto Twp.- In the heart of lake country is this wooded 2.72 acre build site ideal for home/shouse/storage building. The lot is surveyed with a current and future septic site. Power and phone run on the side of the lot. Take a look at this hard-to-find tract.

Additional Details:

Lot Acres	2.72
Lot Dimensions	347x308x334x399
School District	2174
Taxes	\$36
Taxes with Assessments	\$36
Tax Year	2024

Additional Features:

Driving Directions:

From the intersection of Hwys 84/87- go west 1.2 miles on 87 then left on Stoneback Trail to sign on right.



Listed By:
Heartland Real Estate

Affinity Real Estate Inc. participates in the Regional Multiple Listing Service of Minnesota, Inc Broker Reciprocity (sm) program, allowing us to display other broker's listings on our website. All properties are subject to prior sale, change or withdrawal.



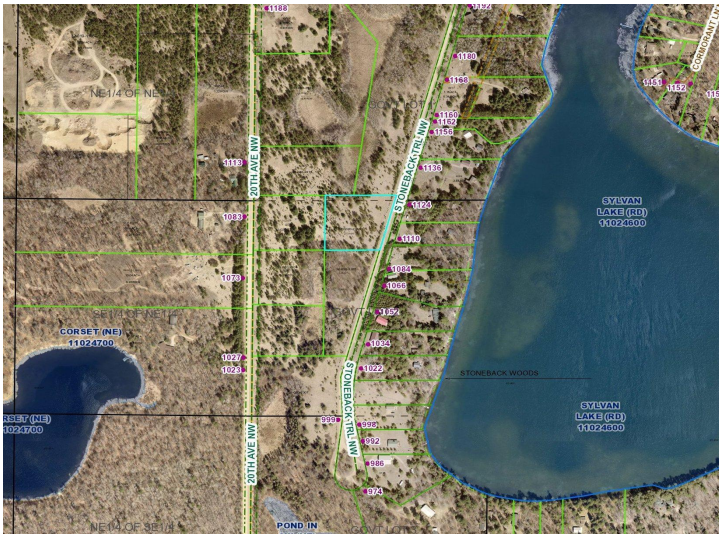
Call Affinity Real Estate

218-237-3333

info@affinityrealestate.com



Affinity Real Estate - 600 Park Avenue South - Park Rapids MN 56470



website: www.AffinityRealEstate.com | email: info@affinityrealestate.com | office: 218-237-3333 | fax:218-237-3377



\$46,500
MLS 6616811 Land
TBD* Stoneback Trail
Backus MN 56435