



MLS 6617072 Lake Home

\$289,800

1,456 sq ft
3 bedrooms
2 baths

2235 Trees Lane
Cass Lake MN 56633

Waterfront: Cass

Status: Active

Description:

Let your lake living begin here! Have you dreamed of being on the lake? Here is your opportunity! This year-around updated 3 bed 2 bath home is located in Trees Harbor, on the Cass Lake chain! With shared lake shore, docking systems, designated boat slips, fish cleaning house and storage for trailers. You will love the large screened-in porch, the new flooring gives the whole home a fresh look and feel, and the double detached garage is a brand new addition! It even has a second level for storage!

Additional Details:

| | |
|------------------------|------------------|
| Year Built | 2004 |
| Lot Acres | 0.26 |
| Lot Dimensions | 170x44x180x43x40 |
| Garage Stalls | 2 |
| School District | 31 |
| Taxes | \$1,986 |
| Taxes with Assessments | \$1,986 |
| Tax Year | 2024 |

Additional Features:

Basement: None **Fuel:** Propane **Garage:** 2 **Heat:** Forced Air **Sewer:** Shared Septic **Water:** Shared System **Air Conditioning:** Central Air

Driving Directions:

Roosevelt Rd to Mission Rd. Right on West Windigo to Trees Lane. Lot #19



Listed By:
Coldwell Banker Crown Realtors

Affinity Real Estate Inc. participates in the Regional Multiple Listing Service of Minnesota, Inc Broker Reciprocity (sm) program, allowing us to display other broker's listings on our website. All properties are subject to prior sale, change or withdrawal.



Call Affinity Real Estate

218-237-3333

info@affinityrealestate.com



Affinity Real Estate - 600 Park Avenue South - Park Rapids MN 56470



website: www.AffinityRealEstate.com | email: info@affinityrealestate.com | office: 218-237-3333 | fax: 218-237-3377

Affinity
REAL ESTATE INC

\$289,800
MLS 6617072 Lake Home
2235 Trees Lane
Cass Lake MN 56633



website: www.AffinityRealEstate.com | email: info@affinityrealestate.com | office: 218-237-3333 | fax:218-237-3377

Affinity
REAL ESTATE INC

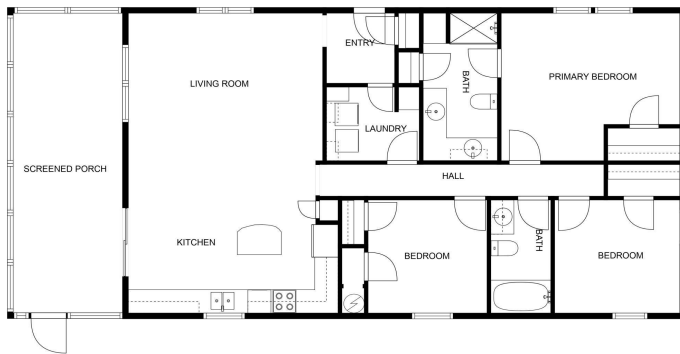
\$289,800
MLS 6617072 Lake Home
2235 Trees Lane
Cass Lake MN 56633



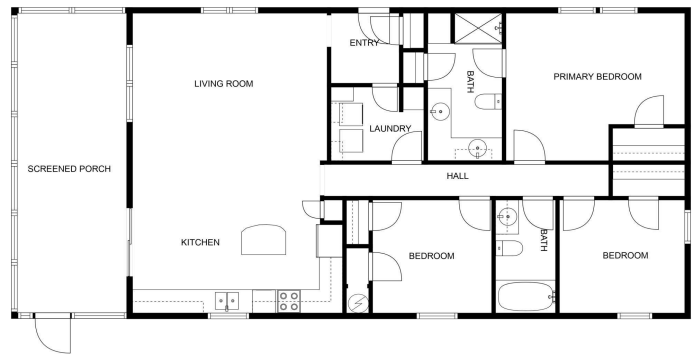
website: www.AffinityRealEstate.com | email: info@affinityrealestate.com | office: 218-237-3333 | fax:218-237-3377



\$289,800
MLS 6617072 Lake Home
2235 Trees Lane
Cass Lake MN 56633



MEASUREMENTS ARE CALCULATED BY CURBICASA TECHNOLOGY. DEEMED HIGHLY RELIABLE BUT NOT GUARANTEED.



MEASUREMENTS ARE CALCULATED BY CURBICASA TECHNOLOGY. DEEMED HIGHLY RELIABLE BUT NOT GUARANTEED.

website: www.AffinityRealEstate.com | email: info@affinityrealestate.com | office: 218-237-3333 | fax: 218-237-3377



\$289,800
 MLS 6617072 Lake Home
 2235 Trees Lane
 Cass Lake MN 56633