



MLS 6617214 Lake Home

\$1,199,000

2,946 sq ft
5 bedrooms
4 baths

8077 County 78
Nisswa MN 56468

Waterfront: Margaret Lake (Lake Shore City)

Status: Active

Description:

This stunning 3-bedroom, 2.5-bath home offers the perfect blend of modern comfort and natural beauty. Recent updates throughout make this home feel fresh and inviting. The attached heated garage provides versatile living space, whether you need a workshop or a cozy retreat.

Enjoy the tranquility of 100 feet of level lake shoreline on Lake Margaret, part of the expansive 13,000+ acre Gull Lake Chain. Explore the area's natural wonders by boat or on foot, and savor the convenience of nearby restaurants. Golf enthusiasts will appreciate the proximity to world-class courses, and Nisswa's charming shops are just a short drive away.

For guests or extended family, the guest cabin offers two additional bedrooms and a bathroom, providing ample space for everyone. Don't miss this opportunity to own your own lakeside paradise!

Additional Details:


Year Built	1985
Lot Acres	0.6
Lot Dimensions	100 x 260 x 150 x 185
Garage Stalls	3
School District	181
Taxes	\$8,350
Taxes with Assessments	\$8,416
Tax Year	2024

Additional Features:

Basement: Daylight/Lookout Windows, Finished, Full **Fuel:** Natural Gas **Garage:** 3 **Heat:** Baseboard, Forced Air **Sewer:** City Sewer/Connected **Water:** Well **Air Conditioning:** Central Air

Driving Directions:

From Hwy 371 in Nisswa, west on CR77, right on CR78 (across from Bar Harbor) to property on left.



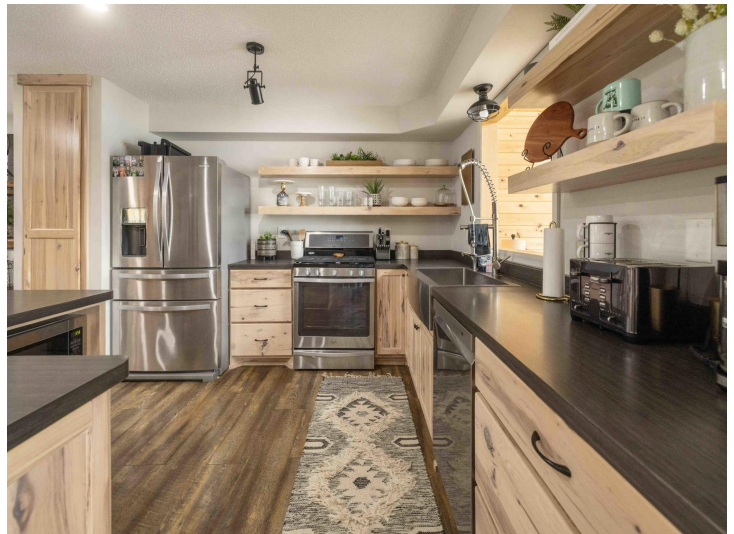
Listed By:
Positive Realty

Affinity Real Estate Inc. participates in the Regional Multiple Listing Service of Minnesota, Inc Broker Reciprocity (sm) program, allowing us to display other broker's listings on our website. All properties are subject to prior sale, change or withdrawal.



Call Affinity Real Estate
218-237-3333
info@affinityrealestate.com

Affinity Real Estate - 600 Park Avenue South - Park Rapids MN 56470



website: www.AffinityRealEstate.com | email: info@affinityrealestate.com | office: 218-237-3333 | fax: 218-237-3377

Affinity
REAL ESTATE INC

\$1,199,000
MLS 6617214 Lake Home
8077 County 78
Nisswa MN 56468



website: www.AffinityRealEstate.com | email: info@affinityrealestate.com | office: 218-237-3333 | fax:218-237-3377

Affinity
REAL ESTATE INC

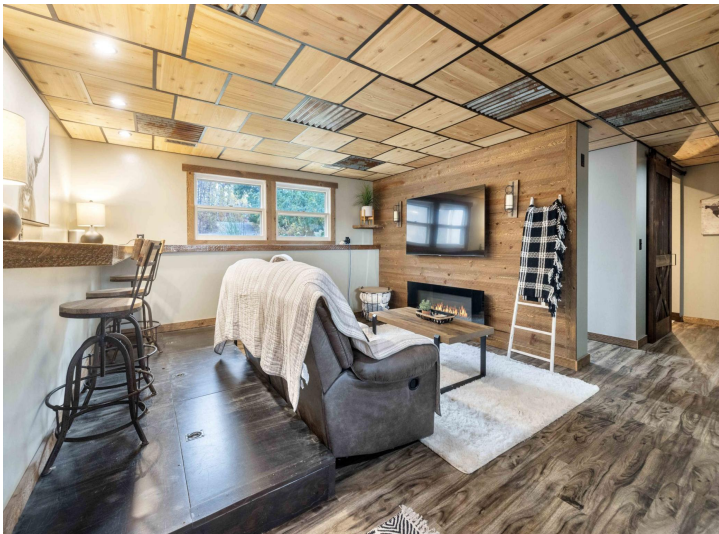
\$1,199,000
MLS 6617214 Lake Home
8077 County 78
Nisswa MN 56468



website: www.AffinityRealEstate.com | email: info@affinityrealestate.com | office: 218-237-3333 | fax:218-237-3377

Affinity
REAL ESTATE INC

\$1,199,000
MLS 6617214 Lake Home
8077 County 78
Nisswa MN 56468



website: www.AffinityRealEstate.com | email: info@affinityrealestate.com | office: 218-237-3333 | fax:218-237-3377

Affinity
REAL ESTATE INC

\$1,199,000
MLS 6617214 Lake Home
8077 County 78
Nisswa MN 56468



website: www.AffinityRealEstate.com | email: info@affinityrealestate.com | office: 218-237-3333 | fax: 218-237-3377

Affinity
REAL ESTATE INC

\$1,199,000
MLS 6617214 Lake Home
8077 County 78
Nisswa MN 56468



website: www.AffinityRealEstate.com | email: info@affinityrealestate.com | office: 218-237-3333 | fax: 218-237-3377

Affinity
REAL ESTATE INC

\$1,199,000
MLS 6617214 Lake Home
8077 County 78
Nisswa MN 56468



website: www.AffinityRealEstate.com | email: info@affinityrealestate.com | office: 218-237-3333 | fax: 218-237-3377



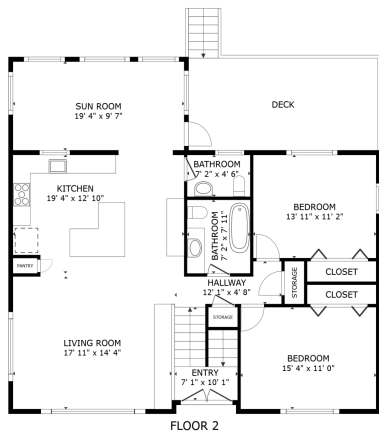
\$1,199,000
MLS 6617214 Lake Home
8077 County 78
Nisswa MN 56468



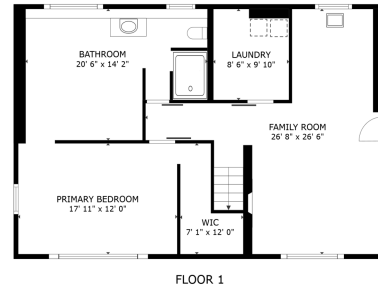
website: www.AffinityRealEstate.com | email: info@affinityrealestate.com | office: 218-237-3333 | fax:218-237-3377

Affinity
REAL ESTATE INC

\$1,199,000
MLS 6617214 Lake Home
8077 County 78
Nisswa MN 56468



GROSS INTERNAL AREA
 FLOOR 1 1,074 sq.ft., FLOOR 2 1,313 sq.ft.
 EXCLUDED AREAS: DECK 231 sq.ft.
 TOTAL: 2,387 sq.ft.
SIZES AND DIMENSIONS ARE APPROXIMATE, ACTUAL MAY VARY.



GROSS INTERNAL AREA
 FLOOR 1 1,074 sq.ft., FLOOR 2 1,313 sq.ft.
 EXCLUDED AREAS: DECK 231 sq.ft.
 TOTAL: 2,387 sq.ft.
SIZES AND DIMENSIONS ARE APPROXIMATE, ACTUAL MAY VARY.



website: www.AffinityRealEstate.com | email: info@affinityrealestate.com | office: 218-237-3333 | fax: 218-237-3377



\$1,199,000
 MLS 6617214 Lake Home
 8077 County 78
 Nisswa MN 56468