



MLS 6617453 Residential

**\$369,900**

3,048 sq ft  
5 bedrooms  
3 baths

24628 Mallard Grade Trail  
Shevlin MN 56676

Status: Pending

**Description:**

Very Private custom built 5 bed, 3 bath country home sitting on 15 wooded and cleared acres. Enjoy the open floor plan with 9 ft ceilings, large primary suite, front and back decking, with a 2 stall attached. 40x60 Steel Foltz building is ready for all your toys. 12x24 insulated cabin is awaiting your mother-in-law, guests or kids hangout. Insulated, heated, and air cooled. Enjoy the very private, quiet setting with room to roam, four wheel and hunt. Site your gun in your own shooting range. Power is out? Not a problem with your generac automatic whole home generator. Come see now before it is gone.

**Additional Details:**

Year Built	2010
Lot Acres	15
Lot Dimensions	80x800
Garage Stalls	2
School District	2311
Taxes	\$270
Taxes with Assessments	\$360
Tax Year	2024

**Additional Features:**

**Basement:** 8 ft+ Pour, Full, Concrete, Storage Space, Sump Pump **Fuel:** Electric **Garage:** 2 **Heat:** Forced Air **Sewer:** Holding Tank, Tank with Drainage Field **Water:** Private **Air Conditioning:** Central Air

**Driving Directions:**



Listed By:  
RE/MAX Legacy Realty

Affinity Real Estate Inc. participates in the Regional Multiple Listing Service of Minnesota, Inc Broker Reciprocity (sm) program, allowing us to display other broker's listings on our website. All properties are subject to prior sale, change or withdrawal.



**Call Affinity Real Estate**

**218-237-3333**

**info@affinityrealestate.com**



**Affinity Real Estate - 600 Park Avenue South - Park Rapids MN 56470**



website: [www.AffinityRealEstate.com](http://www.AffinityRealEstate.com) | email: [info@affinityrealestate.com](mailto:info@affinityrealestate.com) | office: 218-237-3333 | fax:218-237-3377



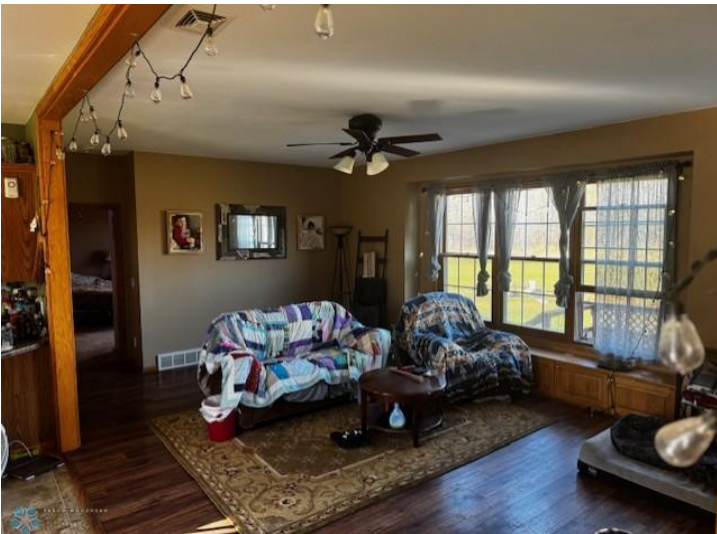
**\$369,900**  
MLS 6617453 Residential  
24628 Mallard Grade Trail  
Shevlin MN 56676



website: [www.AffinityRealEstate.com](http://www.AffinityRealEstate.com) | email: [info@affinityrealestate.com](mailto:info@affinityrealestate.com) | office: 218-237-3333 | fax:218-237-3377

**Affinity**  
REAL ESTATE INC

**\$369,900**  
MLS 6617453 Residential  
24628 Mallard Grade Trail  
Shevlin MN 56676



website: [www.AffinityRealEstate.com](http://www.AffinityRealEstate.com) | email: [info@affinityrealestate.com](mailto:info@affinityrealestate.com) | office: 218-237-3333 | fax:218-237-3377

**Affinity**  
REAL ESTATE INC

**\$369,900**  
MLS 6617453 Residential  
24628 Mallard Grade Trail  
Shevlin MN 56676



website: [www.AffinityRealEstate.com](http://www.AffinityRealEstate.com) | email: [info@affinityrealestate.com](mailto:info@affinityrealestate.com) | office: 218-237-3333 | fax:218-237-3377



**\$369,900**  
MLS 6617453 Residential  
24628 Mallard Grade Trail  
Shevlin MN 56676



website: [www.AffinityRealEstate.com](http://www.AffinityRealEstate.com) | email: [info@affinityrealestate.com](mailto:info@affinityrealestate.com) | office: 218-237-3333 | fax:218-237-3377

**Affinity**  
REAL ESTATE INC

**\$369,900**  
MLS 6617453 Residential  
24628 Mallard Grade Trail  
Shevlin MN 56676



website: [www.AffinityRealEstate.com](http://www.AffinityRealEstate.com) | email: [info@affinityrealestate.com](mailto:info@affinityrealestate.com) | office: 218-237-3333 | fax:218-237-3377

**Affinity**  
REAL ESTATE INC

**\$369,900**  
MLS 6617453 Residential  
24628 Mallard Grade Trail  
Shevlin MN 56676



website: [www.AffinityRealEstate.com](http://www.AffinityRealEstate.com) | email: [info@affinityrealestate.com](mailto:info@affinityrealestate.com) | office: 218-237-3333 | fax:218-237-3377



**\$369,900**  
MLS 6617453 Residential  
24628 Mallard Grade Trail  
Shevlin MN 56676