



MLS 6617465 Residential

\$425,000

3,039 sq ft
3 bedrooms
2 baths

38228 State Highway 87
Frazee MN 56544

Status: Active

Description:

Absolutely remarkable country property only 5 miles east of Frazee. Enjoy 12.4 beautiful acres of land including mostly woods with a 2 acre field area for your large garden or wildlife food plot. 1997 built 3 bedroom (could be 4) one level homestead with a loft area. Large 3 stall 24x36 heated and insulated garage and additional 33x56 pole shed for storage. Lots of wildlife including deer, turkey, and grouse! Property features include a private well and septic system, 1200 sq. ft cement patio area, propane boiler in floor heat and wood forced air furnace with a backup electric boil that has never been used. Large laundry room with lots of storage area, 3 bedrooms on the main floor plus the loft area that can be used for an office, entertainment, or additional sleeping area. Recreational/bonus room with stone flooring with a walkout to the patio area. Garage also has a 10x11 workshop area. This is a nice property with a hard to find lot!

Additional Details:

Year Built	1997
Lot Acres	12.4
Lot Dimensions	450x1103
Garage Stalls	3
School District	23
Taxes	\$2,436
Taxes with Assessments	\$2,436
Tax Year	2024

Additional Features:

Basement: None **Fuel:** Propane, Wood **Garage:** 3 **Heat:** Forced Air, Radiant Floor **Sewer:** Private Sewer, Tank with Drainage Field
Water: Drilled, Private **Air Conditioning:** Window Unit(s)

Driving Directions:

Go east of Frazee on St Hwy 87 for 5 miles to the property on the left side.



Listed By:
Counselor Realty Detroit Lakes

Affinity Real Estate Inc. participates in the Regional Multiple Listing Service of Minnesota, Inc Broker Reciprocity (sm) program, allowing us to display other broker's listings on our website. All properties are subject to prior sale, change or withdrawal.



Call Affinity Real Estate

218-237-3333

info@affinityrealestate.com



Affinity Real Estate - 600 Park Avenue South - Park Rapids MN 56470



website: www.AffinityRealEstate.com | email: info@affinityrealestate.com | office: 218-237-3333 | fax:218-237-3377



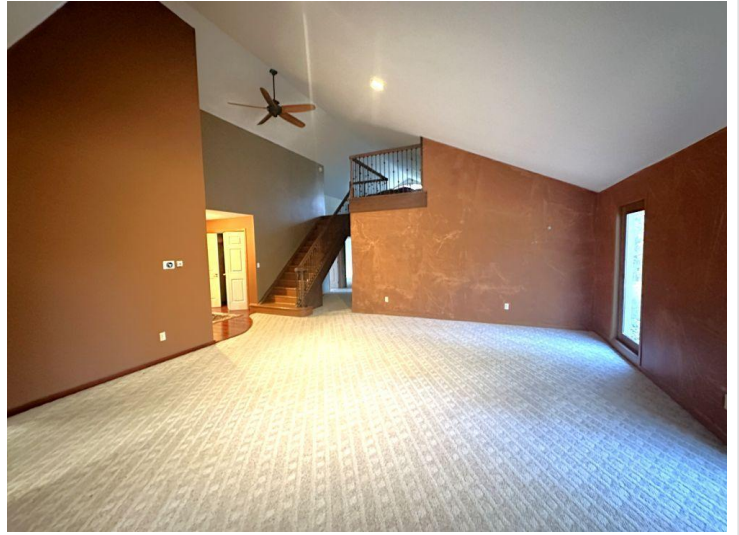
\$425,000
MLS 6617465 Residential
38228 State Highway 87
Frazee MN 56544



website: www.AffinityRealEstate.com | email: info@affinityrealestate.com | office: 218-237-3333 | fax: 218-237-3377



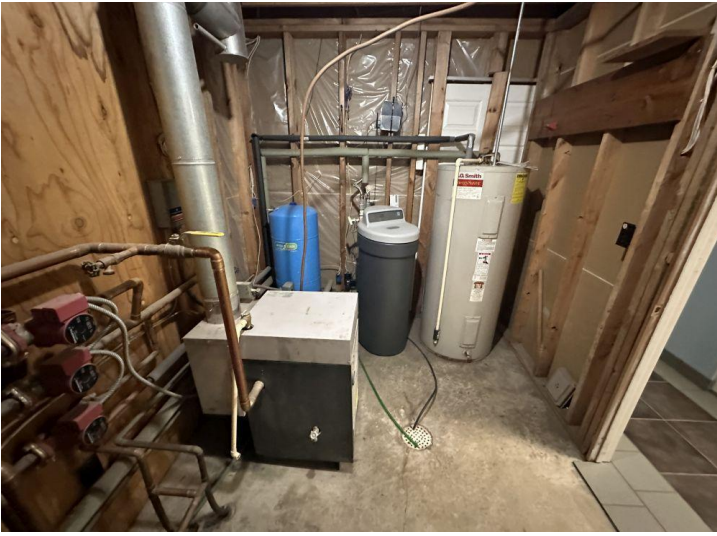
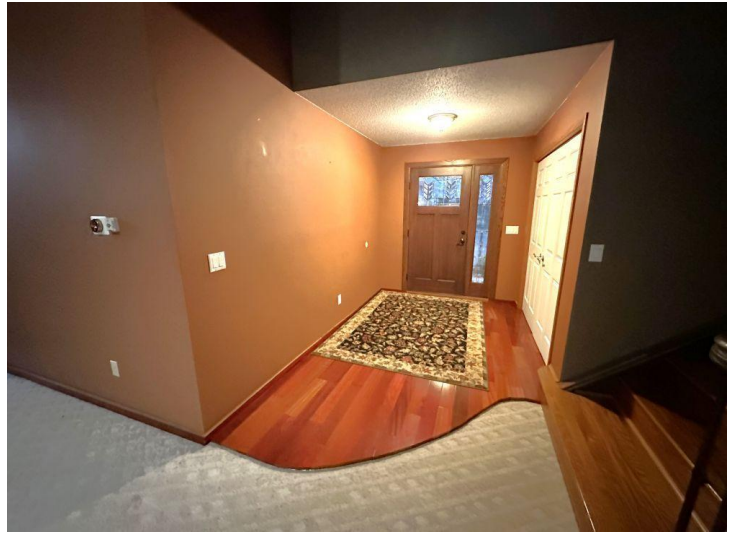
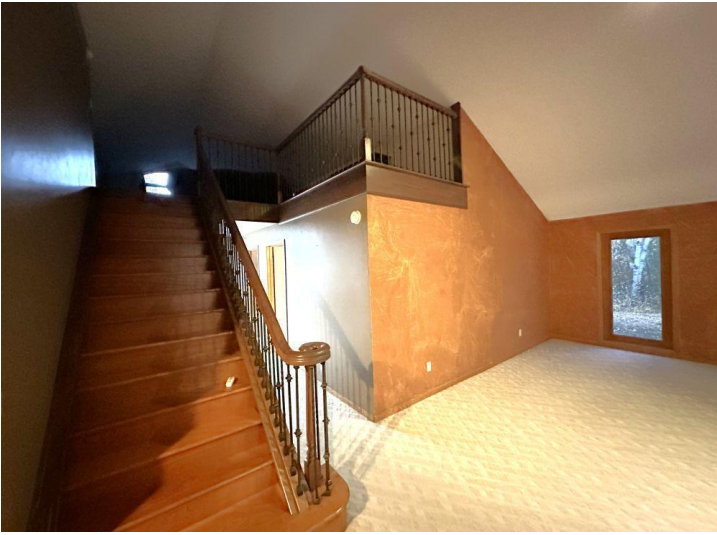
\$425,000
 MLS 6617465 Residential
 38228 State Highway 87
 Frazee MN 56544



website: www.AffinityRealEstate.com | email: info@affinityrealestate.com | office: 218-237-3333 | fax:218-237-3377

Affinity
REAL ESTATE INC

\$425,000
MLS 6617465 Residential
38228 State Highway 87
Frazee MN 56544



website: www.AffinityRealEstate.com | email: info@affinityrealestate.com | office: 218-237-3333 | fax:218-237-3377



\$425,000
MLS 6617465 Residential
38228 State Highway 87
Frazee MN 56544



website: www.AffinityRealEstate.com | email: info@affinityrealestate.com | office: 218-237-3333 | fax:218-237-3377



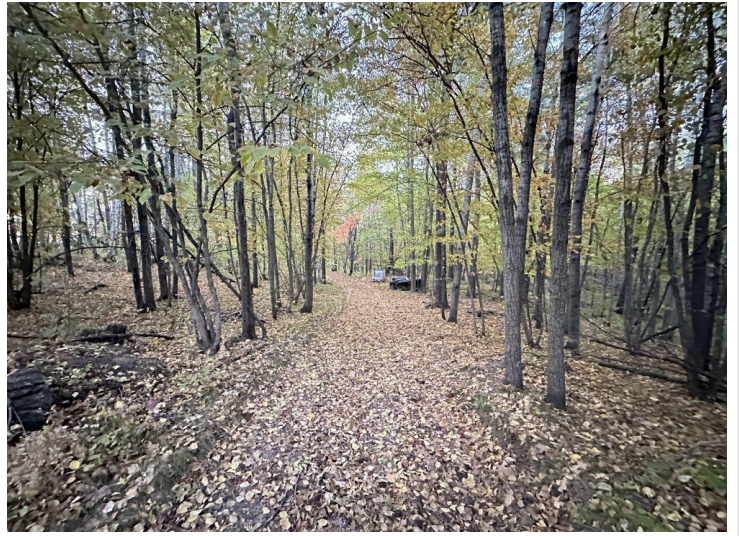
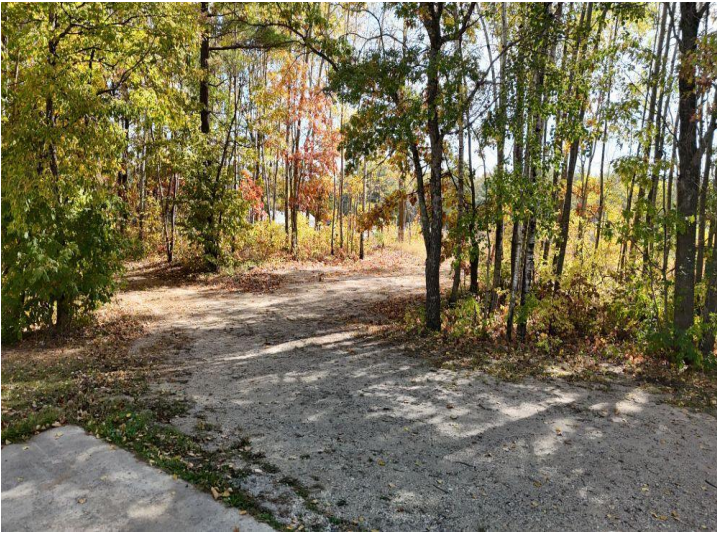
\$425,000
MLS 6617465 Residential
38228 State Highway 87
Frazee MN 56544



website: www.AffinityRealEstate.com | email: info@affinityrealestate.com | office: 218-237-3333 | fax:218-237-3377



\$425,000
MLS 6617465 Residential
38228 State Highway 87
Frazee MN 56544



website: www.AffinityRealEstate.com | email: info@affinityrealestate.com | office: 218-237-3333 | fax: 218-237-3377

Affinity
REAL ESTATE INC

\$425,000
MLS 6617465 Residential
38228 State Highway 87
Frazee MN 56544



website: www.AffinityRealEstate.com | email: info@affinityrealestate.com | office: 218-237-3333 | fax:218-237-3377



\$425,000
MLS 6617465 Residential
38228 State Highway 87
Frazee MN 56544



website: www.AffinityRealEstate.com | email: info@affinityrealestate.com | office: 218-237-3333 | fax:218-237-3377

Affinity
REAL ESTATE INC

\$425,000
MLS 6617465 Residential
38228 State Highway 87
Frazee MN 56544



website: www.AffinityRealEstate.com | email: info@affinityrealestate.com | office: 218-237-3333 | fax:218-237-3377



\$425,000
MLS 6617465 Residential
38228 State Highway 87
Frazee MN 56544



website: www.AffinityRealEstate.com | email: info@affinityrealestate.com | office: 218-237-3333 | fax:218-237-3377

Affinity
REAL ESTATE INC

\$425,000
MLS 6617465 Residential
38228 State Highway 87
Frazee MN 56544



website: www.AffinityRealEstate.com | email: info@affinityrealestate.com | office: 218-237-3333 | fax:218-237-3377



\$425,000
MLS 6617465 Residential
38228 State Highway 87
Frazee MN 56544