



MLS 6617477 Residential

**\$264,900**

1,184 sq ft  
1 bedrooms  
1 baths

17283 Trengove Road  
Solway MN 56678

Status: Active

**Description:**

Cabin in woods on 5 Acre 1 bed(possible 2) 1 bath with 4 stall garage property just minutes south of Solway Mn. Affordable, location, paved road, simple, what more could you ask for. SNOWBIRDS WELCOME!!!

**Additional Details:**

Year Built	2003
Lot Acres	5
Lot Dimensions	325'x650'
Garage Stalls	4
School District	31
Taxes	\$1,424
Taxes with Assessments	\$1,424
Tax Year	2024

**Additional Features:**

**Basement:** Slab **Fuel:** Electric, Wood **Garage:** 4 **Heat:** Baseboard, Wood Stove **Sewer:** Mound Septic, Private Sewer **Water:** Submersible - 4 Inch, Drilled, Private **Air Conditioning:** None

**Driving Directions:**

From Solway, south on Centerline Rd (5) to Trengove, left and third property on the left.  
Gated driveway



Listed By:  
Andy Williams Realty Group, LLC

Affinity Real Estate Inc. participates in the Regional Multiple Listing Service of Minnesota, Inc Broker Reciprocity (sm) program, allowing us to display other broker's listings on our website. All properties are subject to prior sale, change or withdrawal.



Call Affinity Real Estate

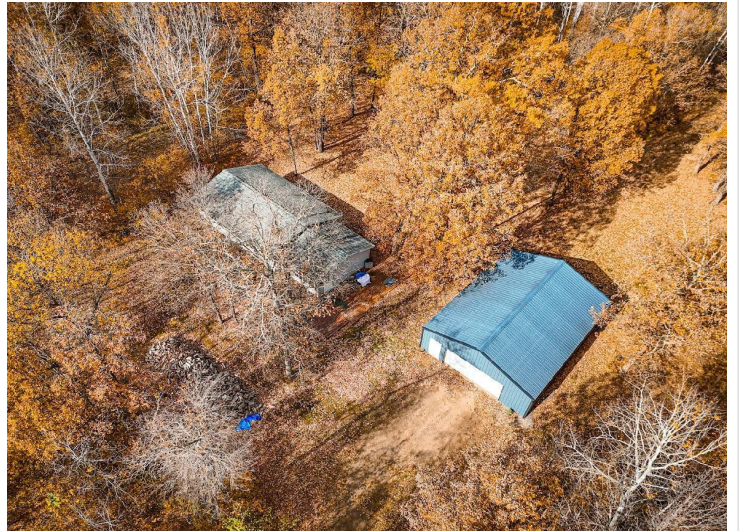
**218-237-3333**

[info@affinityrealestate.com](mailto:info@affinityrealestate.com)



Affinity Real Estate - 600 Park Avenue South - Park Rapids MN 56470





website: [www.AffinityRealEstate.com](http://www.AffinityRealEstate.com) | email: [info@affinityrealestate.com](mailto:info@affinityrealestate.com) | office: 218-237-3333 | fax:218-237-3377



**\$264,900**  
MLS 6617477 Residential  
17283 Trengove Road  
Solway MN 56678





website: [www.AffinityRealEstate.com](http://www.AffinityRealEstate.com) | email: [info@affinityrealestate.com](mailto:info@affinityrealestate.com) | office: 218-237-3333 | fax:218-237-3377



**\$264,900**  
MLS 6617477 Residential  
17283 Trengove Road  
Solway MN 56678





website: [www.AffinityRealEstate.com](http://www.AffinityRealEstate.com) | email: [info@affinityrealestate.com](mailto:info@affinityrealestate.com) | office: 218-237-3333 | fax:218-237-3377



**\$264,900**  
MLS 6617477 Residential  
17283 Trengove Road  
Solway MN 56678