

MLS 6617609 Lake Land

\$129,900

Description:

Schedule an appointment to visit the newly platted lots at New Paradise Point on Lake George. These lots offer great tree cover, privacy, and stunning building sites with captivating views of Lake George. The clear waters of Lake George cover 825 acres, providing ample opportunities for recreation, boating, wildlife viewing, and connecting with nature. This exceptional lake is renowned for its fishing opportunities and is conveniently situated between Park Rapids, Bemidji, and Walker.

Additional Details:

Lot Acres	7.89
Lot Dimensions	irregular
School District	309
Taxes	\$306
Taxes with Assessments	\$306
Tax Year	2024

Additional Features:

Driving Directions:

From 34/71 in Park Rapids, East on 34 to a left onto County 4. Follow County 4 North, approx 16 miles to a right on New Paradise Drive to property.



Listed By:
Wolff & Simon Real Estate

Affinity Real Estate Inc. participates in the Regional Multiple Listing Service of Minnesota, Inc Broker Reciprocity (sm) program, allowing us to display other broker's listings on our website. All properties are subject to prior sale, change or withdrawal.



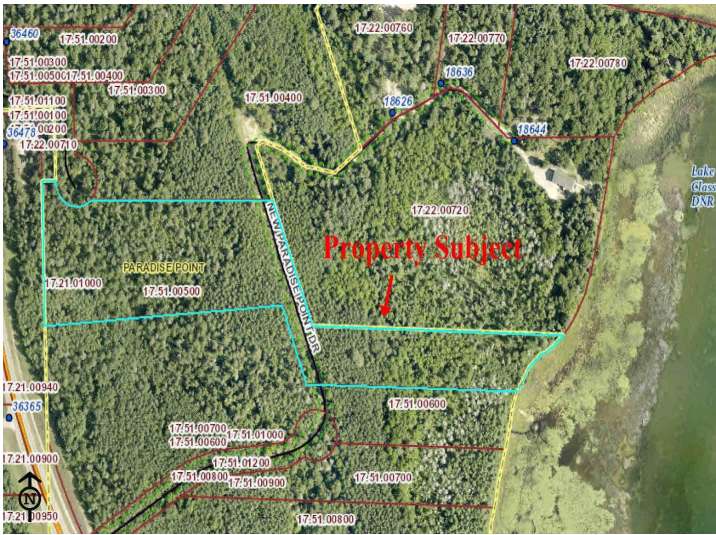
Call Affinity Real Estate

218-237-3333

info@affinityrealestate.com



Affinity Real Estate - 600 Park Avenue South - Park Rapids MN 56470



website: www.AffinityRealEstate.com | email: info@affinityrealestate.com | office: 218-237-3333 | fax: 218-237-3377



\$129,900
 MLS 6617609 Lake Land
 TBD Lot 5 New Manz Drive
 Lake George MN 56458



website: www.AffinityRealEstate.com | email: info@affinityrealestate.com | office: 218-237-3333 | fax: 218-237-3377



\$129,900
MLS 6617609 Lake Land
TBD Lot 5 New Manz Drive
Lake George MN 56458