

MLS 6617611 Lake Land

**\$500,000**

#### Description:

Schedule an appointment to visit the newly platted lots at New Paradise Point on Lake George. These lots offer great tree cover, privacy, and stunning building sites with captivating views of Lake George. The clear waters of Lake George cover 825 acres, providing ample opportunities for recreation, boating, wildlife viewing, and connecting with nature. This exceptional lake is renowned for its fishing opportunities and is conveniently situated between Park Rapids, Bemidji, and Walker.

#### Additional Details:

Lot Acres	3.89
Lot Dimensions	Irregular
School District	309
Taxes	\$2,540
Taxes with Assessments	\$2,540
Tax Year	2024

#### Additional Features:

#### Driving Directions:

From 34/71 in Park Rapids, East on 34 to a left onto County 4. Follow County 4 North, approx 16 miles to a right on New Paradise Drive to property.



Listed By:  
Wolff & Simon Real Estate

Affinity Real Estate Inc. participates in the Regional Multiple Listing Service of Minnesota, Inc Broker Reciprocity (sm) program, allowing us to display other broker's listings on our website. All properties are subject to prior sale, change or withdrawal.



Call Affinity Real Estate

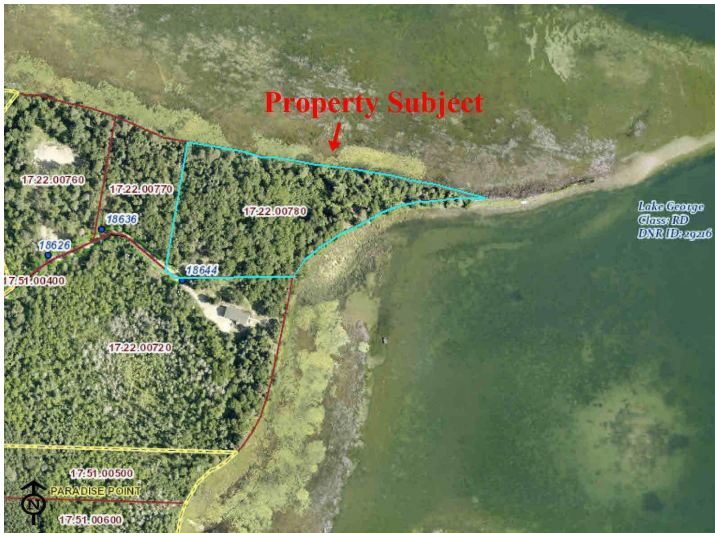
**218-237-3333**

[info@affinityrealestate.com](mailto:info@affinityrealestate.com)



Affinity Real Estate - 600 Park Avenue South - Park Rapids MN 56470





website: [www.AffinityRealEstate.com](http://www.AffinityRealEstate.com) | email: [info@affinityrealestate.com](mailto:info@affinityrealestate.com) | office: 218-237-3333 | fax: 218-237-3377



**\$500,000**  
 MLS 6617611 Lake Land  
 TBD Parcel D New Paradise  
 Point Drive  
 Lake George MN 56458





website: [www.AffinityRealEstate.com](http://www.AffinityRealEstate.com) | email: [info@affinityrealestate.com](mailto:info@affinityrealestate.com) | office: 218-237-3333 | fax: 218-237-3377



**\$500,000**  
MLS 6617611 Lake Land  
TBD Parcel D New Paradise  
Point Drive  
Lake George MN 56458





website: [www.AffinityRealEstate.com](http://www.AffinityRealEstate.com) | email: [info@affinityrealestate.com](mailto:info@affinityrealestate.com) | office: 218-237-3333 | fax: 218-237-3377



**\$500,000**  
 MLS 6617611 Lake Land  
 TBD Parcel D New Paradise  
 Point Drive  
 Lake George MN 56458





website: [www.AffinityRealEstate.com](http://www.AffinityRealEstate.com) | email: [info@affinityrealestate.com](mailto:info@affinityrealestate.com) | office: 218-237-3333 | fax: 218-237-3377



**\$500,000**  
MLS 6617611 Lake Land  
TBD Parcel D New Paradise  
Point Drive  
Lake George MN 56458