



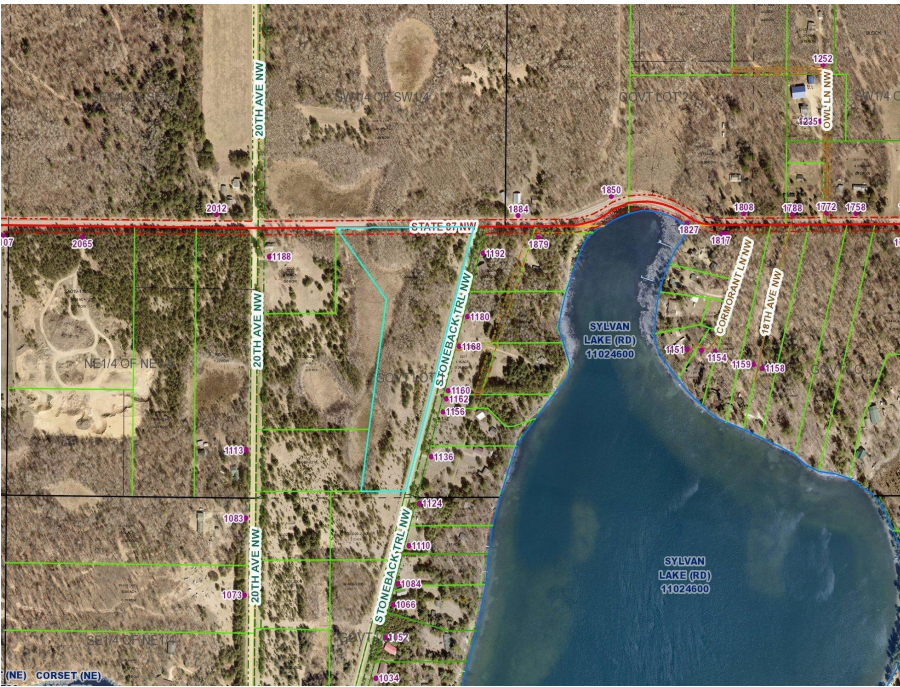
MLS 6617630 Land

\$64,500

10.91 Acres
Raw Land

TBD** Stoneback Trail
Backus MN 56435

Status: Active



Description:

Ponto Twp.- In the heart of lake country is this wooded 10.91 build site ideal for home/shouse/storage building. The lot is surveyed with a current and future septic site. Power and phone run on the side of the lot. Take a look at this hard to-find tract.

Additional Details:

Lot Acres	10.91
Lot Dimensions	733x1300x239x942x438
School District	2174
Taxes	\$112
Taxes with Assessments	\$112
Tax Year	2024

Additional Features:

Driving Directions:

From the intersection of Hwys 84/87- go west 1.2 miles on 87 property is on the corner of Hwy 87 and Stoneback Trail.



Listed By:
Heartland Real Estate

Affinity Real Estate Inc. participates in the Regional Multiple Listing Service of Minnesota, Inc Broker Reciprocity (sm) program, allowing us to display other broker's listings on our website. All properties are subject to prior sale, change or withdrawal.



Call Affinity Real Estate

218-237-3333

info@affinityrealestate.com



Affinity Real Estate - 600 Park Avenue South - Park Rapids MN 56470



website: www.AffinityRealEstate.com | email: info@affinityrealestate.com | office: 218-237-3333 | fax:218-237-3377



\$64,500
MLS 6617630 Land
TBD** Stoneback Trail
Backus MN 56435