



MLS 6617691 Residential

**\$345,000**

1,680 sq ft  
3 bedrooms  
3 baths

25278 County Highway 26  
Callaway MN 56521

Status: Pending

**Description:**

This charming manufactured home is set on 25.64 acres, making it perfect for outdoor enthusiasts. The home features 3 bedrooms, 2.5 baths, and the convenience of main-floor laundry. A cozy gas fireplace adds warmth to the spacious living area. The exterior boasts durable vinyl siding, brand-new shingles, and newly added decks that invite you to relax and enjoy the serene surroundings. A new septic system has also been installed for added peace of mind. The property includes a private pond, ideal for waterfowl hunting and nature lovers. The full basement offers potential for customization, with room for additional bedrooms and baths.

**Additional Details:**

Year Built	1999
Lot Acres	25.64
Lot Dimensions	25.64 acres
School District	22
Taxes	\$1,143
Taxes with Assessments	\$1,208
Tax Year	2024

**Additional Features:**

**Basement:** Egress Window(s), Full **Fuel:** Propane **Heat:** Forced Air, Fireplace(s) **Sewer:** Septic System Compliant - Yes **Water:** Well **Air Conditioning:** None

**Driving Directions:**

From Detroit Lakes: Take Hwy 59 North, turn right at 270th St., and then turn right onto 253rd Ave.



Listed By:  
Counselor Realty Detroit Lakes

Affinity Real Estate Inc. participates in the Regional Multiple Listing Service of Minnesota, Inc Broker Reciprocity (sm) program, allowing us to display other broker's listings on our website. All properties are subject to prior sale, change or withdrawal.



**Call Affinity Real Estate**

**218-237-3333**

**info@affinityrealestate.com**



**Affinity Real Estate - 600 Park Avenue South - Park Rapids MN 56470**



website: [www.AffinityRealEstate.com](http://www.AffinityRealEstate.com) | email: [info@affinityrealestate.com](mailto:info@affinityrealestate.com) | office: 218-237-3333 | fax: 218-237-3377

**Affinity**  
REAL ESTATE INC

**\$345,000**  
MLS 6617691 Residential  
25278 County Highway 26  
Callaway MN 56521



website: [www.AffinityRealEstate.com](http://www.AffinityRealEstate.com) | email: [info@affinityrealestate.com](mailto:info@affinityrealestate.com) | office: 218-237-3333 | fax:218-237-3377



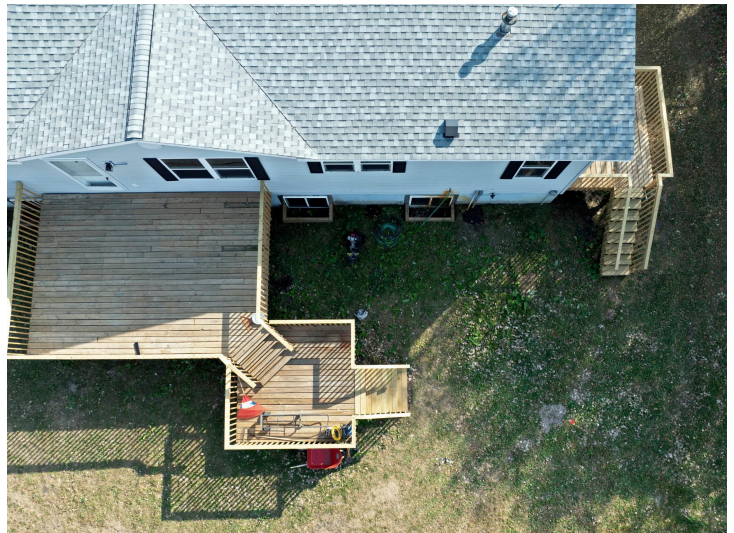
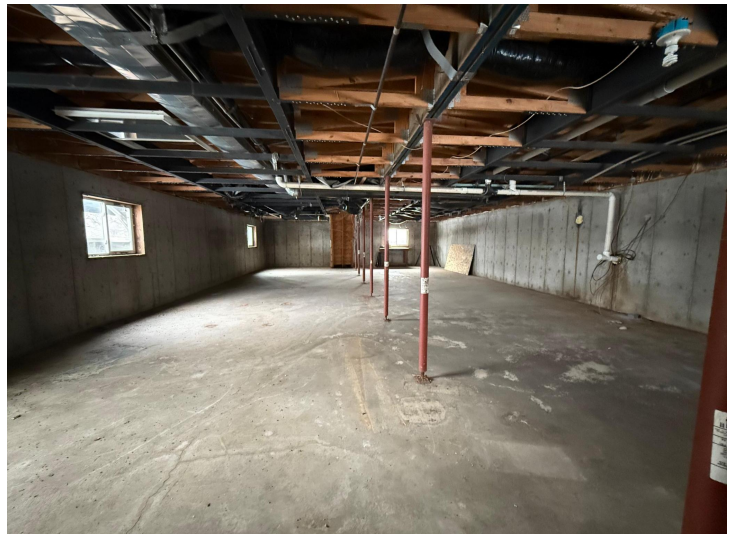
**\$345,000**  
MLS 6617691 Residential  
25278 County Highway 26  
Callaway MN 56521



website: [www.AffinityRealEstate.com](http://www.AffinityRealEstate.com) | email: [info@affinityrealestate.com](mailto:info@affinityrealestate.com) | office: 218-237-3333 | fax: 218-237-3377

**Affinity**  
REAL ESTATE INC

**\$345,000**  
MLS 6617691 Residential  
25278 County Highway 26  
Callaway MN 56521



website: [www.AffinityRealEstate.com](http://www.AffinityRealEstate.com) | email: [info@affinityrealestate.com](mailto:info@affinityrealestate.com) | office: 218-237-3333 | fax:218-237-3377

**Affinity**  
REAL ESTATE INC

**\$345,000**  
MLS 6617691 Residential  
25278 County Highway 26  
Callaway MN 56521



website: [www.AffinityRealEstate.com](http://www.AffinityRealEstate.com) | email: [info@affinityrealestate.com](mailto:info@affinityrealestate.com) | office: 218-237-3333 | fax:218-237-3377



**\$345,000**  
 MLS 6617691 Residential  
 25278 County Highway 26  
 Callaway MN 56521