



MLS 6618240 Lake Land

\$129,000

Description:

For Sale: Stunning 9+ Acres on Big LaSalle Lake!

Discover your paradise on Big LaSalle Lake with crystal clear waters and over 300' of hard-bottom shoreline. This beautiful property features breathtaking views, mature trees, and an established trail to the lake. Enjoy the perfect blend of acreage, lake access, and endless recreational opportunities. Don't miss out on this rare chance to build your dream retreat!

Additional Details:

| | |
|------------------------|----------|
| Lot Acres | 9.1 |
| Lot Dimensions | 300x1250 |
| School District | 31 |
| Taxes | \$394 |
| Taxes with Assessments | \$394 |
| Tax Year | 2024 |

Additional Features:

Driving Directions:

West on Division St, left on Becida Rd 9.5 miles, right on County 9 4 miles to Becida. South on County 3 7 miles, right on 430th St, right on 105th Ave, left on Quetzal Dr, right on Quiet Shores Trail.



Listed By:
Century 21 Dickinson

Affinity Real Estate Inc. participates in the Regional Multiple Listing Service of Minnesota, Inc Broker Reciprocity (sm) program, allowing us to display other broker's listings on our website. All properties are subject to prior sale, change or withdrawal.



Call Affinity Real Estate

218-237-3333

info@affinityrealestate.com



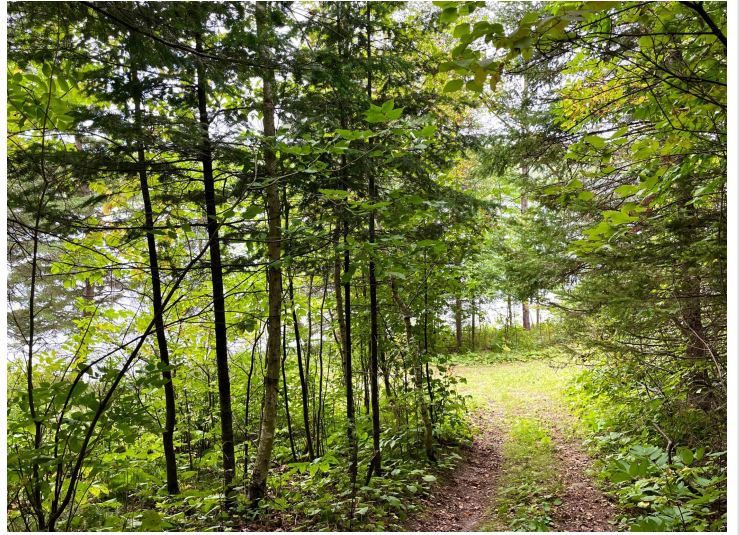
Affinity Real Estate - 600 Park Avenue South - Park Rapids MN 56470



website: www.AffinityRealEstate.com | email: info@affinityrealestate.com | office: 218-237-3333 | fax:218-237-3377



\$129,000
MLS 6618240 Lake Land
TBD Quiet Shores Trail
Solway MN 56678



website: www.AffinityRealEstate.com | email: info@affinityrealestate.com | office: 218-237-3333 | fax:218-237-3377



\$129,000
MLS 6618240 Lake Land
TBD Quiet Shores Trail
Solway MN 56678



website: www.AffinityRealEstate.com | email: info@affinityrealestate.com | office: 218-237-3333 | fax:218-237-3377



\$129,000
MLS 6618240 Lake Land
TBD Quiet Shores Trail
Solway MN 56678



website: www.AffinityRealEstate.com | email: info@affinityrealestate.com | office: 218-237-3333 | fax:218-237-3377



\$129,000
MLS 6618240 Lake Land
TBD Quiet Shores Trail
Solway MN 56678