



MLS 6618371 Residential

**\$265,000**

3,120 sq ft  
4 bedrooms  
3 baths

20644 219th Avenue  
Nevis MN 56467

Status: Active

**Description:**

Nestled in a prime location near Nevis, Park Rapids, and Dorset, this spacious 4-bedroom, 3-bathroom home has undergone a stunning renovation. Enjoy the newly updated windows, roof, and a modern kitchen. The entire space is adorned with fresh, stylish floor coverings throughout. Moreover, this property offers seamless access to the Heartland Trail, perfect for indulging in outdoor activities. With a 2-stall detached garage and the final touches being put on the new split and survey, this home epitomizes modern comfort and convenience. Property split is in progress, survey is near completion, exact lot size and dimensions TBD along with tax amount. The driveway is an easement for ingress and egress.

Appliances will be installed Thursday 10/17/2024.

**Additional Details:**

Year Built	1990
Lot Dimensions	378xirr
Garage Stalls	2
School District	308
Taxes	(unreported)
Taxes with Assessments	(unreported)
Tax Year	2024

**Additional Features:**

**Basement:** Block, Egress Window(s), Finished, Full, Walkout **Fuel:** Propane, Wood **Garage:** 2 **Heat:** Forced Air **Sewer:** Tank with Drainage Field  
**Water:** Submersible - 4 Inch, Drilled, Well **Air Conditioning:** None

**Driving Directions:**

From Park Rapids head East on Hwy 34 to a left on 226 (Dorset Corner) to a right on 81 to a left on 219th Ave. to property on right.



Listed By:  
Wolff & Simon Real Estate

Affinity Real Estate Inc. participates in the Regional Multiple Listing Service of Minnesota, Inc Broker Reciprocity (sm) program, allowing us to display other broker's listings on our website. All properties are subject to prior sale, change or withdrawal.



Call Affinity Real Estate

**218-237-3333**

[info@affinityrealestate.com](mailto:info@affinityrealestate.com)



Affinity Real Estate - 600 Park Avenue South - Park Rapids MN 56470





website: [www.AffinityRealEstate.com](http://www.AffinityRealEstate.com) | email: [info@affinityrealestate.com](mailto:info@affinityrealestate.com) | office: 218-237-3333 | fax:218-237-3377



**\$265,000**  
MLS 6618371 Residential  
20644 219th Avenue  
Nevis MN 56467





website: [www.AffinityRealEstate.com](http://www.AffinityRealEstate.com) | email: [info@affinityrealestate.com](mailto:info@affinityrealestate.com) | office: 218-237-3333 | fax: 218-237-3377

**Affinity**  
REAL ESTATE INC

**\$265,000**  
MLS 6618371 Residential  
20644 219th Avenue  
Nevis MN 56467





website: [www.AffinityRealEstate.com](http://www.AffinityRealEstate.com) | email: [info@affinityrealestate.com](mailto:info@affinityrealestate.com) | office: 218-237-3333 | fax:218-237-3377



**\$265,000**  
MLS 6618371 Residential  
20644 219th Avenue  
Nevis MN 56467





website: [www.AffinityRealEstate.com](http://www.AffinityRealEstate.com) | email: [info@affinityrealestate.com](mailto:info@affinityrealestate.com) | office: 218-237-3333 | fax: 218-237-3377

**Affinity**  
REAL ESTATE INC

**\$265,000**  
MLS 6618371 Residential  
20644 219th Avenue  
Nevis MN 56467



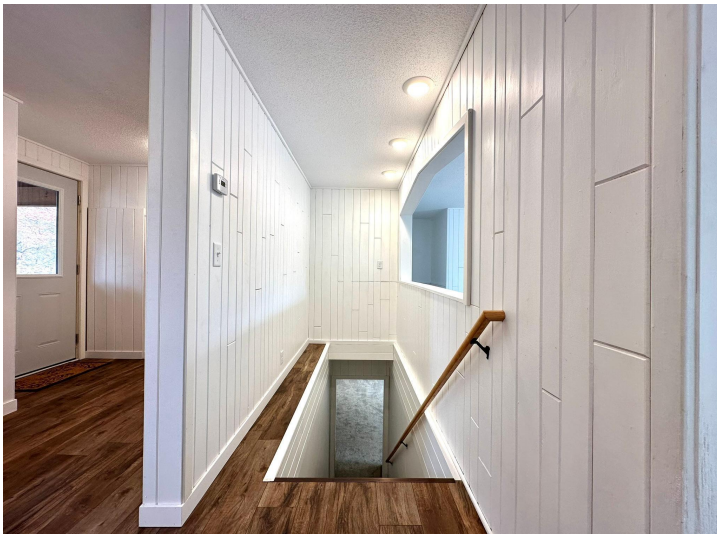


website: [www.AffinityRealEstate.com](http://www.AffinityRealEstate.com) | email: [info@affinityrealestate.com](mailto:info@affinityrealestate.com) | office: 218-237-3333 | fax: 218-237-3377



**\$265,000**  
MLS 6618371 Residential  
20644 219th Avenue  
Nevis MN 56467





website: [www.AffinityRealEstate.com](http://www.AffinityRealEstate.com) | email: [info@affinityrealestate.com](mailto:info@affinityrealestate.com) | office: 218-237-3333 | fax:218-237-3377



**\$265,000**  
MLS 6618371 Residential  
20644 219th Avenue  
Nevis MN 56467





website: [www.AffinityRealEstate.com](http://www.AffinityRealEstate.com) | email: [info@affinityrealestate.com](mailto:info@affinityrealestate.com) | office: 218-237-3333 | fax:218-237-3377



**\$265,000**  
MLS 6618371 Residential  
20644 219th Avenue  
Nevis MN 56467



