



MLS 6618468 Residential

**\$374,900**

1,008 sq ft  
2 bedrooms  
1 baths

28014 White Cedar Road  
Bemidji MN 56601

Status: Active

**Description:**

This 4.05-acre pine-studded property features an immaculate and very private one-level two bedroom, 1 bath log home made from 14-inch diameter logs, a stunning kitchen with stainless steel appliances, a magnificent river rock fireplace, a new tiled luxury shower, and a fenced-in back yard with doggy door. A newer stunning 40'x45' shop with a spacious lean-to and an attached 32'x15' studio with in-floor heat has commercial possibilities with a separate driveway. Other features include a double detached 24'x24' garage (one side man cave, the other side single stall garage), a large, covered woodshed, crushed granite dust driveways, a fenced garden, and more! Make this your home before the holidays!

**Additional Details:**


Year Built	1997
Lot Acres	4.05
Lot Dimensions	815x41x897x386
Garage Stalls	5
School District	31
Taxes	\$1,882
Taxes with Assessments	\$2,108
Tax Year	2024

**Additional Features:**

**Basement:** Concrete **Fuel:** Electric, Wood **Garage:** 5 **Heat:** Baseboard, Fireplace(s), Radiant **Sewer:** Private Sewer, Septic System Compliant - Yes **Water:** Submersible - 4 Inch, Private, Well **Air Conditioning:** Wall Unit(s)

**Driving Directions:**

From Bemidji, East on Hwy 2 to right on 279th Ave (S Steam Boat Rd), left on White Cedar Rd to property on the left.

 Listed By:  
Realty Experts, LLC

Affinity Real Estate Inc. participates in the Regional Multiple Listing Service of Minnesota, Inc Broker Reciprocity (sm) program, allowing us to display other broker's listings on our website. All properties are subject to prior sale, change or withdrawal.

 **Call Affinity Real Estate**  
**218-237-3333**  
**info@affinityrealestate.com**

    
Affinity Real Estate - 600 Park Avenue South - Park Rapids MN 56470



website: [www.AffinityRealEstate.com](http://www.AffinityRealEstate.com) | email: [info@affinityrealestate.com](mailto:info@affinityrealestate.com) | office: 218-237-3333 | fax:218-237-3377

**Affinity**  
REAL ESTATE INC

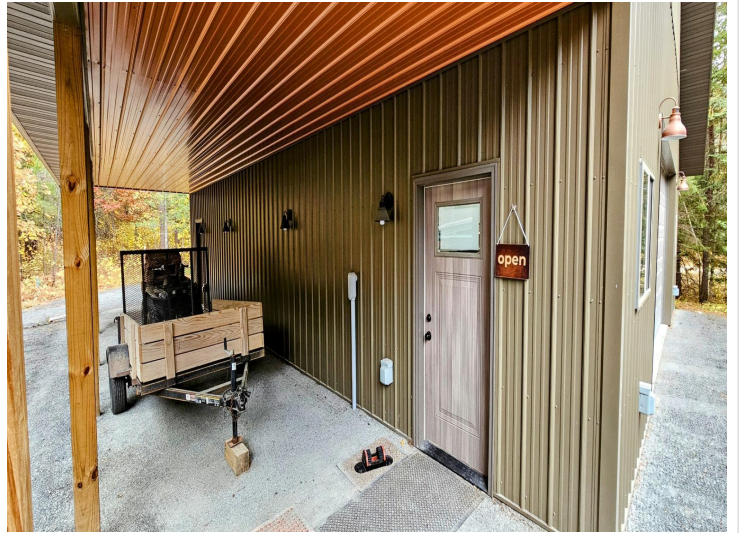
**\$374,900**  
MLS 6618468 Residential  
28014 White Cedar Road  
Bemidji MN 56601



website: [www.AffinityRealEstate.com](http://www.AffinityRealEstate.com) | email: [info@affinityrealestate.com](mailto:info@affinityrealestate.com) | office: 218-237-3333 | fax:218-237-3377

**Affinity**  
REAL ESTATE INC

**\$374,900**  
MLS 6618468 Residential  
28014 White Cedar Road  
Bemidji MN 56601



website: [www.AffinityRealEstate.com](http://www.AffinityRealEstate.com) | email: [info@affinityrealestate.com](mailto:info@affinityrealestate.com) | office: 218-237-3333 | fax: 218-237-3377

**Affinity**  
REAL ESTATE INC

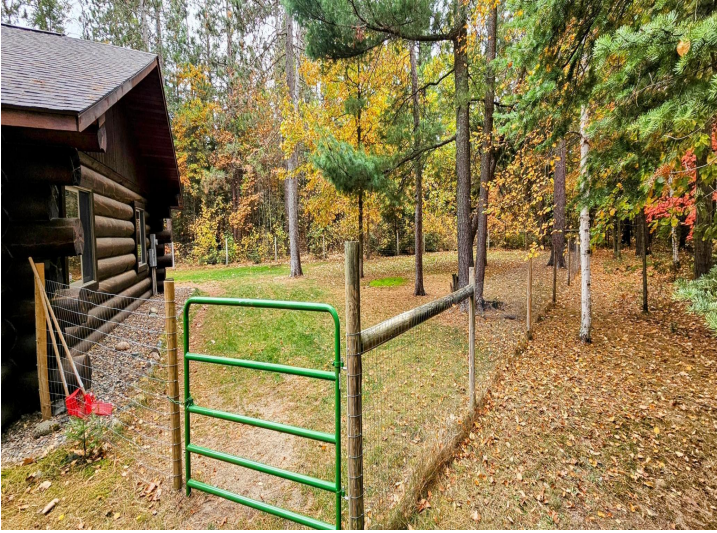
**\$374,900**  
MLS 6618468 Residential  
28014 White Cedar Road  
Bemidji MN 56601



website: [www.AffinityRealEstate.com](http://www.AffinityRealEstate.com) | email: [info@affinityrealestate.com](mailto:info@affinityrealestate.com) | office: 218-237-3333 | fax:218-237-3377



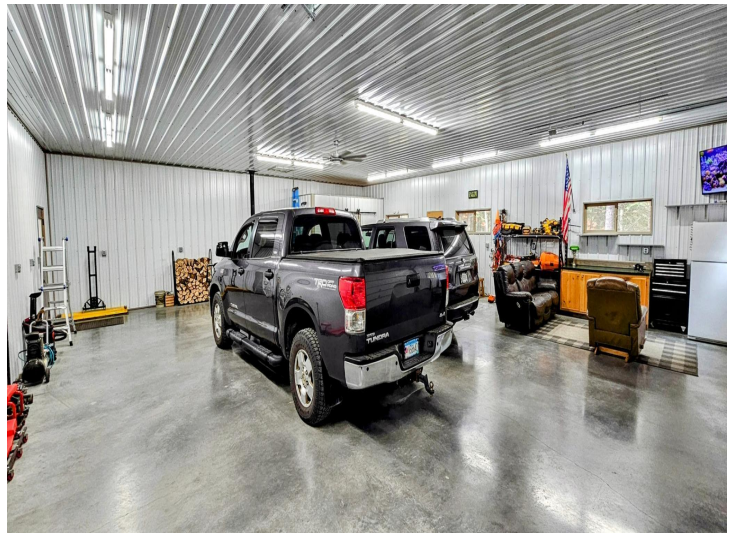
**\$374,900**  
MLS 6618468 Residential  
28014 White Cedar Road  
Bemidji MN 56601



website: [www.AffinityRealEstate.com](http://www.AffinityRealEstate.com) | email: [info@affinityrealestate.com](mailto:info@affinityrealestate.com) | office: 218-237-3333 | fax:218-237-3377



**\$374,900**  
MLS 6618468 Residential  
28014 White Cedar Road  
Bemidji MN 56601



website: [www.AffinityRealEstate.com](http://www.AffinityRealEstate.com) | email: [info@affinityrealestate.com](mailto:info@affinityrealestate.com) | office: 218-237-3333 | fax: 218-237-3377

**Affinity**  
REAL ESTATE INC

**\$374,900**  
MLS 6618468 Residential  
28014 White Cedar Road  
Bemidji MN 56601

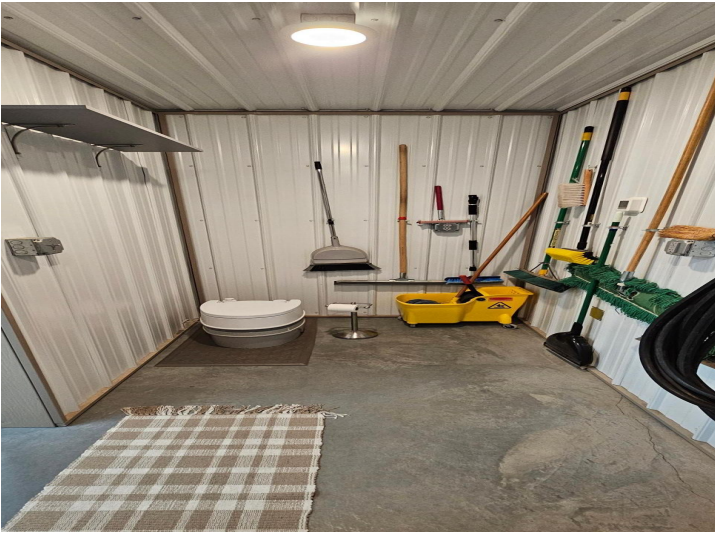


website: [www.AffinityRealEstate.com](http://www.AffinityRealEstate.com) | email: [info@affinityrealestate.com](mailto:info@affinityrealestate.com) | office: 218-237-3333 | fax:218-237-3377



**\$374,900**  
MLS 6618468 Residential  
28014 White Cedar Road  
Bemidji MN 56601





website: [www.AffinityRealEstate.com](http://www.AffinityRealEstate.com) | email: [info@affinityrealestate.com](mailto:info@affinityrealestate.com) | office: 218-237-3333 | fax: 218-237-3377

**Affinity**  
REAL ESTATE INC

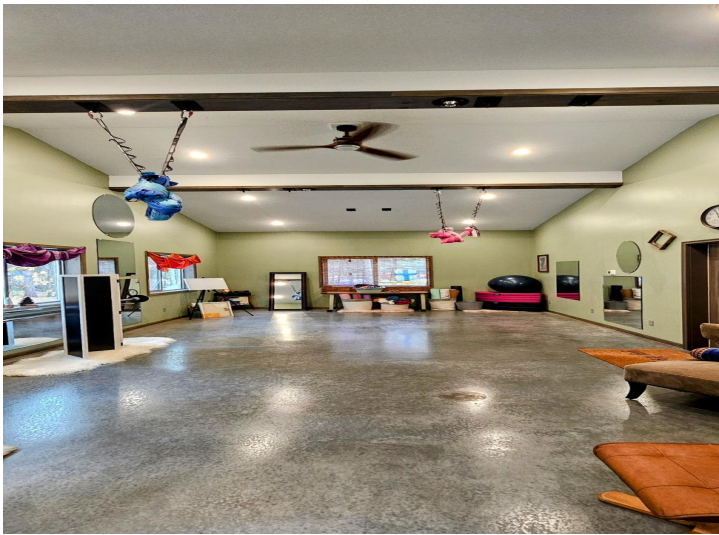
**\$374,900**  
MLS 6618468 Residential  
28014 White Cedar Road  
Bemidji MN 56601



website: [www.AffinityRealEstate.com](http://www.AffinityRealEstate.com) | email: [info@affinityrealestate.com](mailto:info@affinityrealestate.com) | office: 218-237-3333 | fax: 218-237-3377

**Affinity**  
REAL ESTATE INC

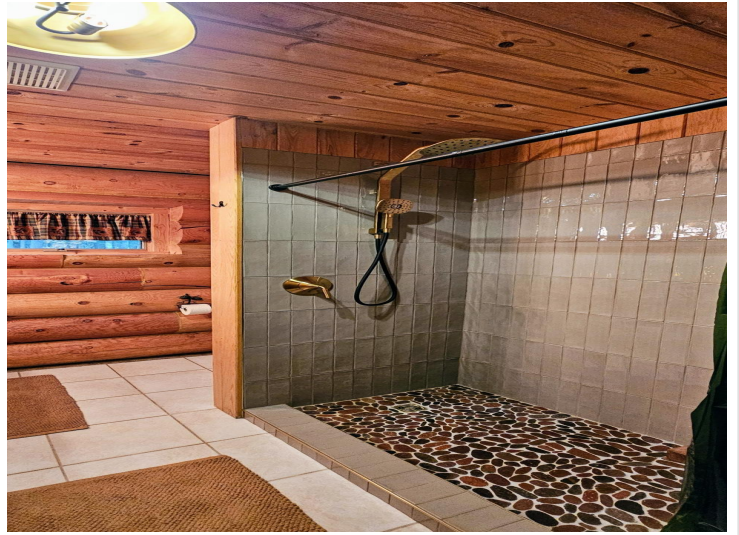
**\$374,900**  
MLS 6618468 Residential  
28014 White Cedar Road  
Bemidji MN 56601



website: [www.AffinityRealEstate.com](http://www.AffinityRealEstate.com) | email: [info@affinityrealestate.com](mailto:info@affinityrealestate.com) | office: 218-237-3333 | fax:218-237-3377

**Affinity**  
REAL ESTATE INC

**\$374,900**  
MLS 6618468 Residential  
28014 White Cedar Road  
Bemidji MN 56601



website: [www.AffinityRealEstate.com](http://www.AffinityRealEstate.com) | email: [info@affinityrealestate.com](mailto:info@affinityrealestate.com) | office: 218-237-3333 | fax: 218-237-3377

**Affinity**  
REAL ESTATE INC

**\$374,900**  
MLS 6618468 Residential  
28014 White Cedar Road  
Bemidji MN 56601



website: [www.AffinityRealEstate.com](http://www.AffinityRealEstate.com) | email: [info@affinityrealestate.com](mailto:info@affinityrealestate.com) | office: 218-237-3333 | fax: 218-237-3377

**Affinity**  
REAL ESTATE INC

**\$374,900**  
MLS 6618468 Residential  
28014 White Cedar Road  
Bemidji MN 56601



website: [www.AffinityRealEstate.com](http://www.AffinityRealEstate.com) | email: [info@affinityrealestate.com](mailto:info@affinityrealestate.com) | office: 218-237-3333 | fax:218-237-3377

**Affinity**  
REAL ESTATE INC

**\$374,900**  
MLS 6618468 Residential  
28014 White Cedar Road  
Bemidji MN 56601



website: [www.AffinityRealEstate.com](http://www.AffinityRealEstate.com) | email: [info@affinityrealestate.com](mailto:info@affinityrealestate.com) | office: 218-237-3333 | fax:218-237-3377



**\$374,900**  
MLS 6618468 Residential  
28014 White Cedar Road  
Bemidji MN 56601



website: [www.AffinityRealEstate.com](http://www.AffinityRealEstate.com) | email: [info@affinityrealestate.com](mailto:info@affinityrealestate.com) | office: 218-237-3333 | fax: 218-237-3377

**Affinity**  
REAL ESTATE INC

**\$374,900**  
MLS 6618468 Residential  
28014 White Cedar Road  
Bemidji MN 56601





website: [www.AffinityRealEstate.com](http://www.AffinityRealEstate.com) | email: [info@affinityrealestate.com](mailto:info@affinityrealestate.com) | office: 218-237-3333 | fax:218-237-3377



**\$374,900**  
MLS 6618468 Residential  
28014 White Cedar Road  
Bemidji MN 56601