



MLS 6619068 Land

\$72,500

1.42 Acres
Raw Land

Tract B Pearl Lake Drive
Detroit Lakes MN 56501

Status: Active

Description:

TRACT B - Discover your private oasis on this stunning 1.42-acre back lot, perfectly situated on the southeast side of picturesque Pearl Lake. Just 5 miles from the vibrant community of Detroit Lakes and less than 1 mile from the Pearl Lake public access, this property offers the ideal blend of seclusion and convenience, accessible via paved public roads.

The lot is level and generously covered with a beautiful mix of Maple, Oak, and Aspen trees, creating a serene backdrop for your dream home or getaway retreat. Whether you're looking to build, camp, or simply enjoy nature, this heavily wooded property provides endless possibilities.

Don't miss your chance to own a piece of tranquility in a prime location—experience the beauty and charm of Pearl Lake living today!

Additional Details:

Lot Acres	1.42
Lot Dimensions	152x408
School District	22
Taxes	\$218
Taxes with Assessments	\$218
Tax Year	2024

Additional Features:

Driving Directions:

From DL, take US HWY 59 South to Co Rd 6, turn right and follow to W Lake Sallie Dr, turn right at the curve and proceed to Pearl Lake Rd, turn left and follow to Pearl Lake Dr, follow .6 miles to signs.



Listed By:
Counselor Realty Detroit Lakes

Affinity Real Estate Inc. participates in the Regional Multiple Listing Service of Minnesota, Inc Broker Reciprocity (sm) program, allowing us to display other broker's listings on our website. All properties are subject to prior sale, change or withdrawal.



Call Affinity Real Estate

218-237-3333

info@affinityrealestate.com



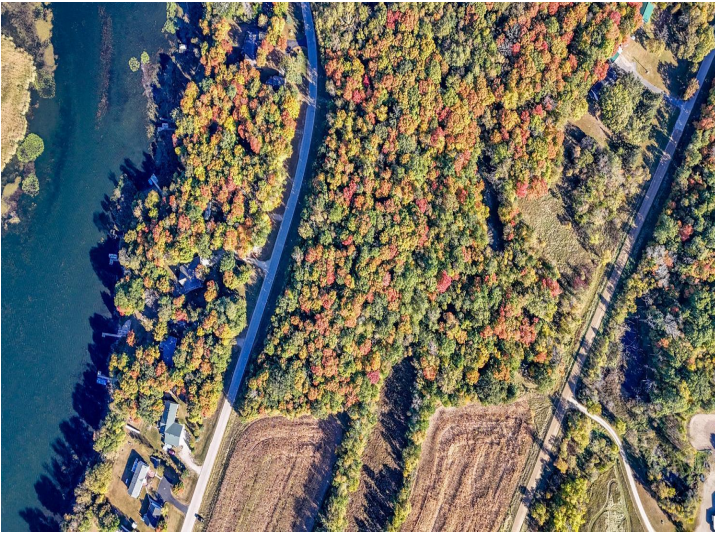
Affinity Real Estate - 600 Park Avenue South - Park Rapids MN 56470



website: www.AffinityRealEstate.com | email: info@affinityrealestate.com | office: 218-237-3333 | fax: 218-237-3377



\$72,500
MLS 6619068 Land
Tract B Pearl Lake Drive
Detroit Lakes MN 56501



website: www.AffinityRealEstate.com | email: info@affinityrealestate.com | office: 218-237-3333 | fax: 218-237-3377



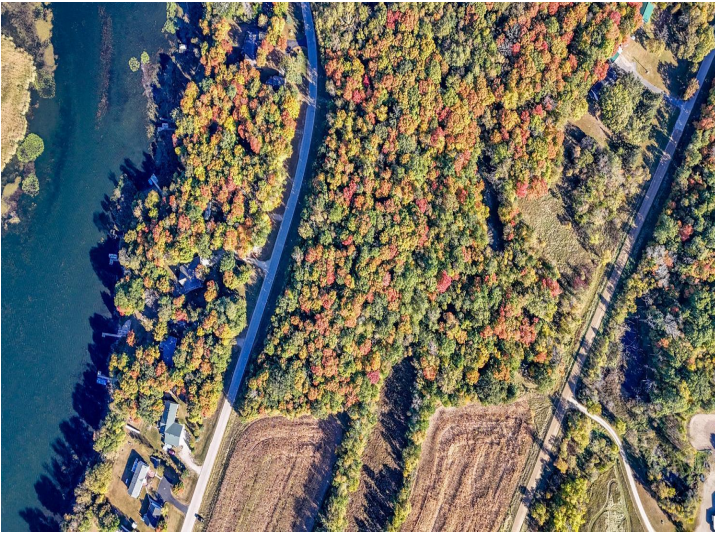
\$72,500
 MLS 6619068 Land
 Tract B Pearl Lake Drive
 Detroit Lakes MN 56501



website: www.AffinityRealEstate.com | email: info@affinityrealestate.com | office: 218-237-3333 | fax: 218-237-3377



\$72,500
 MLS 6619068 Land
 Tract B Pearl Lake Drive
 Detroit Lakes MN 56501



website: www.AffinityRealEstate.com | email: info@affinityrealestate.com | office: 218-237-3333 | fax: 218-237-3377



\$72,500
 MLS 6619068 Land
 Tract B Pearl Lake Drive
 Detroit Lakes MN 56501



website: www.AffinityRealEstate.com | email: info@affinityrealestate.com | office: 218-237-3333 | fax: 218-237-3377



\$72,500
 MLS 6619068 Land
 Tract B Pearl Lake Drive
 Detroit Lakes MN 56501



website: www.AffinityRealEstate.com | email: info@affinityrealestate.com | office: 218-237-3333 | fax: 218-237-3377



\$72,500
MLS 6619068 Land
Tract B Pearl Lake Drive
Detroit Lakes MN 56501



website: www.AffinityRealEstate.com | email: info@affinityrealestate.com | office: 218-237-3333 | fax: 218-237-3377



\$72,500
MLS 6619068 Land
Tract B Pearl Lake Drive
Detroit Lakes MN 56501