



MLS 6619495 Lake Land

**\$199,900**

**Description:**

Take advantage of this rare opportunity to own 30 acres with frontage on scenic Middle Leaf Lake near Ottertail. Spanning 404 acres with a maximum depth of 43 feet, Middle Leaf Lake is perfect for boating, fishing, and outdoor enjoyment. Whether you're looking for a peaceful recreational spot to hunt or enjoy the great outdoors, or looking for a place to farm or build your lake home, this lot offers endless possibilities. Interested in expanding? The neighboring 2+acre lot, complete with a charming farmhouse, is also available for \$269,900. Don't miss out on this lakeside opportunity!

**Additional Details:**

Lot Acres	30
Lot Dimensions	1670x1364
School District	545
Taxes	\$560
Taxes with Assessments	\$560
Tax Year	2024

**Additional Features:**

**Driving Directions:**

From Henning, take County Highway 108 north to Leaf River Rd and turn east.



Listed By:  
Keller Williams Realty Professionals

Affinity Real Estate Inc. participates in the Regional Multiple Listing Service of Minnesota, Inc Broker Reciprocity (sm) program, allowing us to display other broker's listings on our website. All properties are subject to prior sale, change or withdrawal.



**Call Affinity Real Estate**

**218-237-3333**

**info@affinityrealestate.com**



**Affinity Real Estate - 600 Park Avenue South - Park Rapids MN 56470**



website: [www.AffinityRealEstate.com](http://www.AffinityRealEstate.com) | email: [info@affinityrealestate.com](mailto:info@affinityrealestate.com) | office: 218-237-3333 | fax: 218-237-3377

**Affinity**  
REAL ESTATE INC

**\$199,900**  
MLS 6619495 Lake Land  
49XXX Leaf River Road  
Ottertail MN 56571



website: [www.AffinityRealEstate.com](http://www.AffinityRealEstate.com) | email: [info@affinityrealestate.com](mailto:info@affinityrealestate.com) | office: 218-237-3333 | fax:218-237-3377



**\$199,900**  
MLS 6619495 Lake Land  
49XXX Leaf River Road  
Ottertail MN 56571



website: [www.AffinityRealEstate.com](http://www.AffinityRealEstate.com) | email: [info@affinityrealestate.com](mailto:info@affinityrealestate.com) | office: 218-237-3333 | fax:218-237-3377



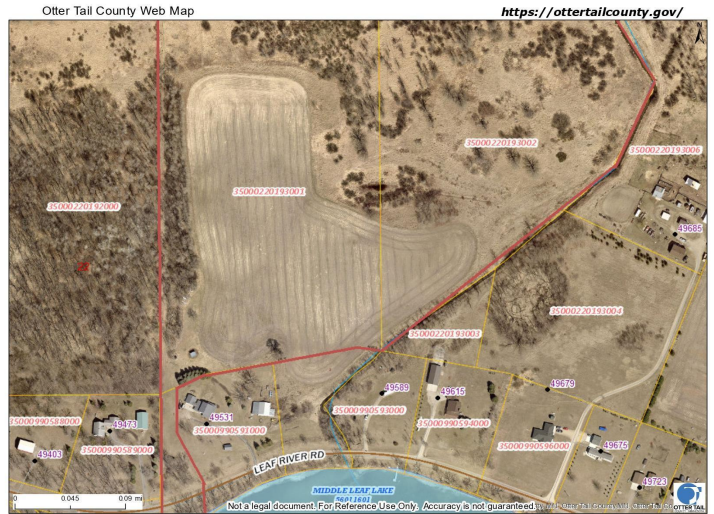
**\$199,900**  
MLS 6619495 Lake Land  
49XXX Leaf River Road  
Ottertail MN 56571



website: [www.AffinityRealEstate.com](http://www.AffinityRealEstate.com) | email: [info@affinityrealestate.com](mailto:info@affinityrealestate.com) | office: 218-237-3333 | fax:218-237-3377



**\$199,900**  
MLS 6619495 Lake Land  
49XXX Leaf River Road  
Ottertail MN 56571



website: [www.AffinityRealEstate.com](http://www.AffinityRealEstate.com) | email: [info@affinityrealestate.com](mailto:info@affinityrealestate.com) | office: 218-237-3333 | fax:218-237-3377



**\$199,900**  
MLS 6619495 Lake Land  
49XXX Leaf River Road  
Ottertail MN 56571