



MLS 6619837 Land

\$37,500

4.59 Acres
Raw Land

XXX Highway 84
Pine River MN 56474

Status: Active

Description:

Welcome to this beautiful north woods property! Property is wooded with an open area in the back awaiting your ideas! Great access to Highway 84 with the road approach to the property being on the North East side. Conveniently located close to the town of Pine River for necessities and entertainment. Come with your ideas, new opportunities await!


Additional Details:

Lot Acres	4.59
Lot Dimensions	150x1330x150x1330
School District	2174
Taxes	\$76
Taxes with Assessments	\$76
Tax Year	2024

Additional Features:

Driving Directions:

Property is off of Highway 84. West side of the road.

 Listed By:
Timber Ghost Realty, LLC

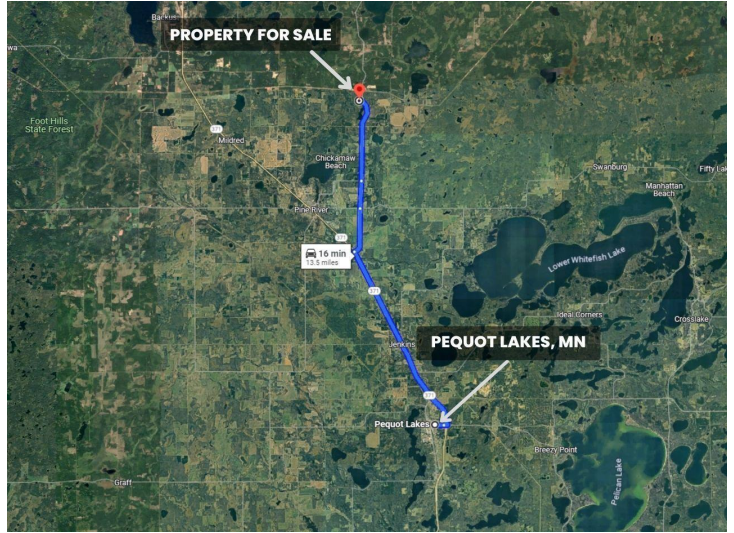
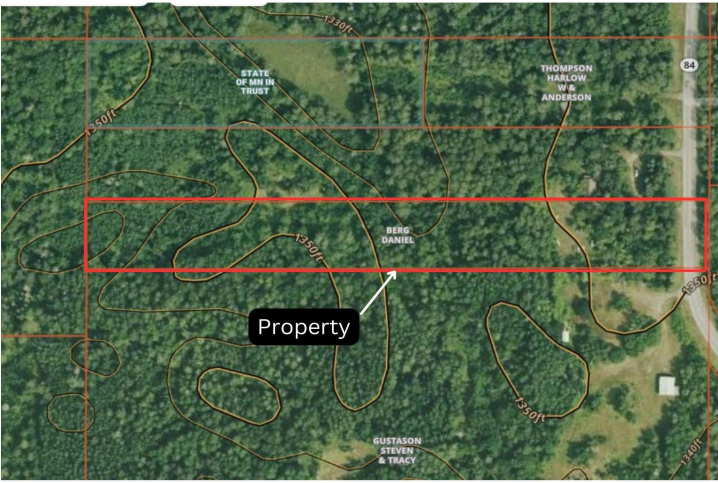
Affinity Real Estate Inc. participates in the Regional Multiple Listing Service of Minnesota, Inc Broker Reciprocity (sm) program, allowing us to display other broker's listings on our website. All properties are subject to prior sale, change or withdrawal.



Call Affinity Real Estate
218-237-3333
info@affinityrealestate.com



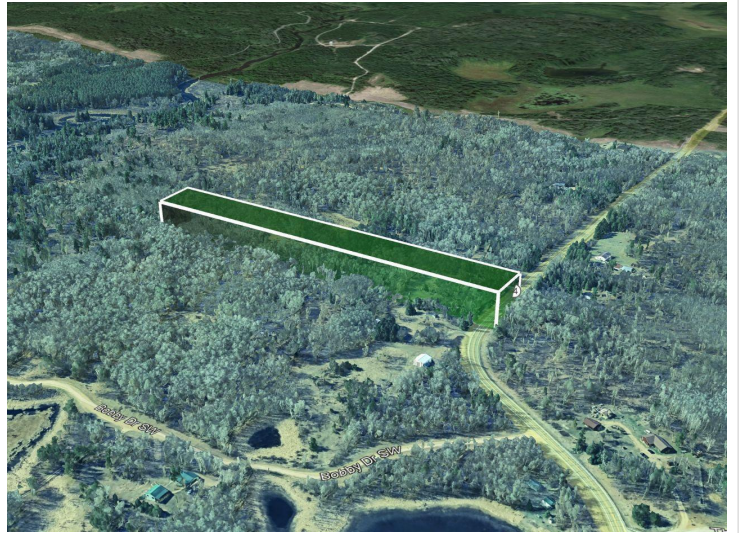
Affinity Real Estate - 600 Park Avenue South - Park Rapids MN 56470



website: www.AffinityRealEstate.com | email: info@affinityrealestate.com | office: 218-237-3333 | fax:218-237-3377



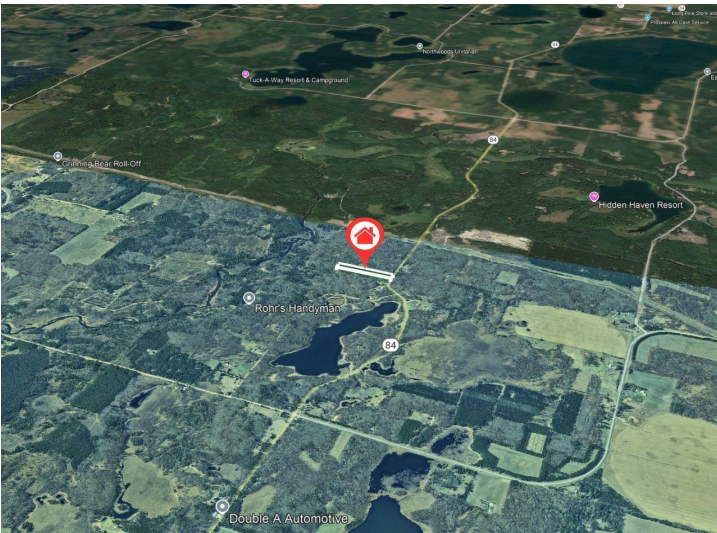
\$37,500
MLS 6619837 Land
XXX Highway 84
Pine River MN 56474



website: www.AffinityRealEstate.com | email: info@affinityrealestate.com | office: 218-237-3333 | fax:218-237-3377

Affinity
REAL ESTATE INC

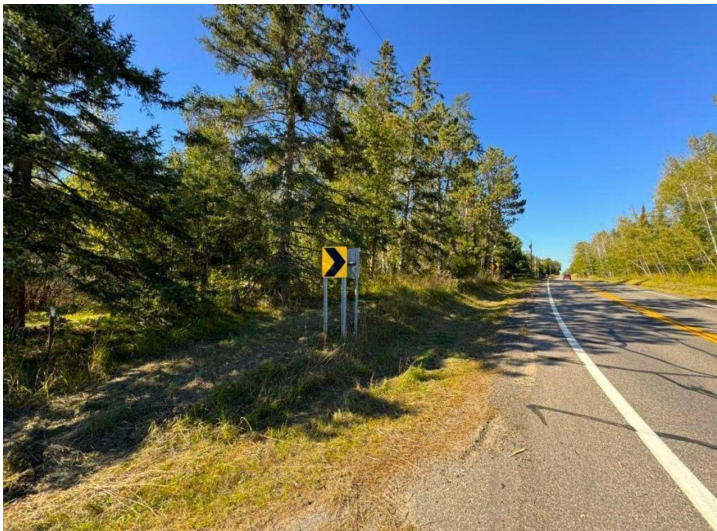
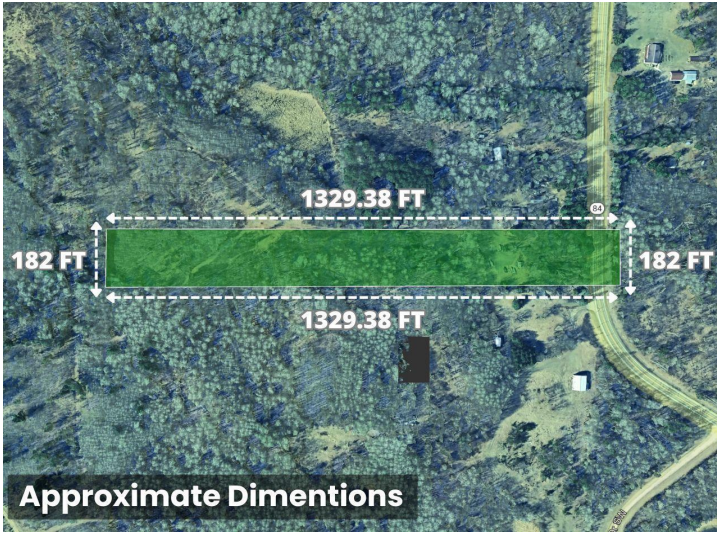
\$37,500
MLS 6619837 Land
XXX Highway 84
Pine River MN 56474



website: www.AffinityRealEstate.com | email: info@affinityrealestate.com | office: 218-237-3333 | fax:218-237-3377



\$37,500
MLS 6619837 Land
XXX Highway 84
Pine River MN 56474



website: www.AffinityRealEstate.com | email: info@affinityrealestate.com | office: 218-237-3333 | fax:218-237-3377



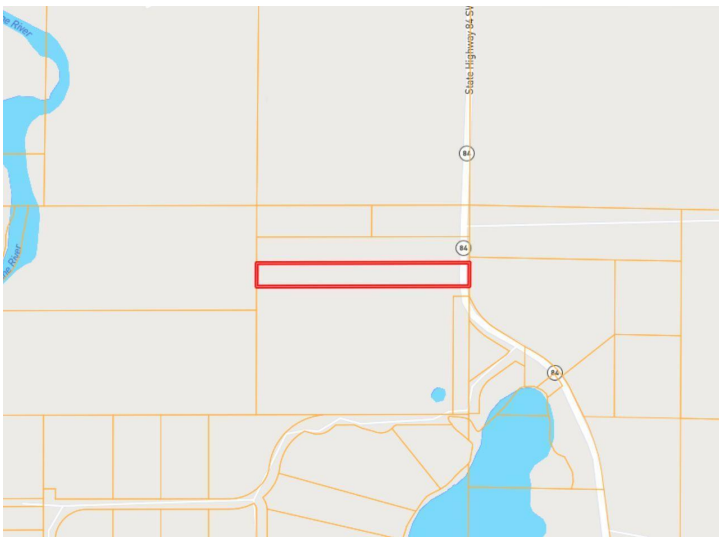
\$37,500
MLS 6619837 Land
XXX Highway 84
Pine River MN 56474



Fritz Loven Park
 > 29 minutes away



Foot Hills State Forest
 > 38 minutes away



website: www.AffinityRealEstate.com | email: info@affinityrealestate.com | office: 218-237-3333 | fax:218-237-3377



\$37,500
 MLS 6619837 Land
 XXX Highway 84
 Pine River MN 56474