



MLS 6619972 Lake Land

\$119,900

Description:

4 beautifully wooded lots on Lake George! Take your pick. Lots 7, 8, 9 and 10. All have 150 feet of lakeshore with a sunrise exposure. Driveway is in for access. The variety of building sites are numerous depending on your preference. No restrictive covenants, so you can enjoy the lots with a camper or build to your liking. Fishing and recreational opportunities are amazing on this popular lake in the heart of blueberry country! Thousands of acres of public land available for use within just a few miles. Annual Blueberry festival will keep you coming back year after year!

Additional Details:

Lot Acres	3.75
Lot Dimensions	.
School District	309
Taxes	\$276
Taxes with Assessments	\$276
Tax Year	2024

Additional Features:

Driving Directions:

From Hwy 71 and 34 in Park Rapids, head east on 34 approx 2 miles to County 4, then left (north) on 4 for approx 16.2 miles to New Paradise Drive on the right side. See signs.



Listed By:
Keller Williams Realty Professionals

Affinity Real Estate Inc. participates in the Regional Multiple Listing Service of Minnesota, Inc Broker Reciprocity (sm) program, allowing us to display other broker's listings on our website. All properties are subject to prior sale, change or withdrawal.



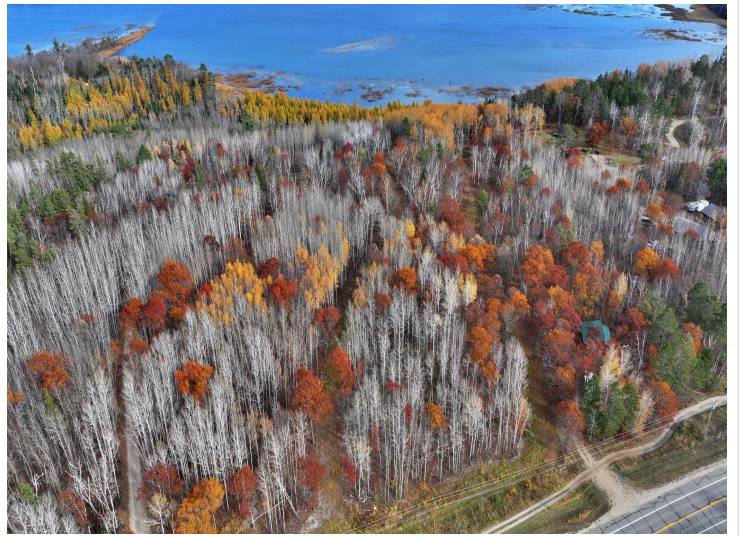
Call Affinity Real Estate

218-237-3333

info@affinityrealestate.com



Affinity Real Estate - 600 Park Avenue South - Park Rapids MN 56470



website: www.AffinityRealEstate.com | email: info@affinityrealestate.com | office: 218-237-3333 | fax: 218-237-3377



\$119,900
MLS 6619972 Lake Land
TBD County 4 - Lot 9
Lake George MN 56458



website: www.AffinityRealEstate.com | email: info@affinityrealestate.com | office: 218-237-3333 | fax:218-237-3377



\$119,900
MLS 6619972 Lake Land
TBD County 4 - Lot 9
Lake George MN 56458



website: www.AffinityRealEstate.com | email: info@affinityrealestate.com | office: 218-237-3333 | fax:218-237-3377



\$119,900
MLS 6619972 Lake Land
TBD County 4 - Lot 9
Lake George MN 56458