



MLS 6619974 Lake Land

**\$124,900**

**Description:**

4 beautifully wooded lots on Lake George! Take your pick. Lots 7, 8, 9 and 10. All have 150 feet of lakeshore with a sunrise exposure. Driveway is in for access. The variety of building sites are numerous depending on your preference. No restrictive covenants, so you can enjoy the lots with a camper or build to your liking. Fishing and recreational opportunities are amazing on this popular lake in the heart of blueberry country! Thousands of acres of public land available for use within just a few miles. Annual Blueberry festival will keep you coming back year after year!

**Additional Details:**

Lot Acres	3.72
Lot Dimensions	.
School District	309
Taxes	\$380
Taxes with Assessments	\$380
Tax Year	2024

**Additional Features:**

**Driving Directions:**

From Hwy 71 and 34 in Park Rapids, head east on 34 approx 2 miles to County 4, then left (north) on 4 for approx 16.2 miles to New Paradise Drive on the right side. See signs.



Listed By:  
Keller Williams Realty Professionals

Affinity Real Estate Inc. participates in the Regional Multiple Listing Service of Minnesota, Inc Broker Reciprocity (sm) program, allowing us to display other broker's listings on our website. All properties are subject to prior sale, change or withdrawal.



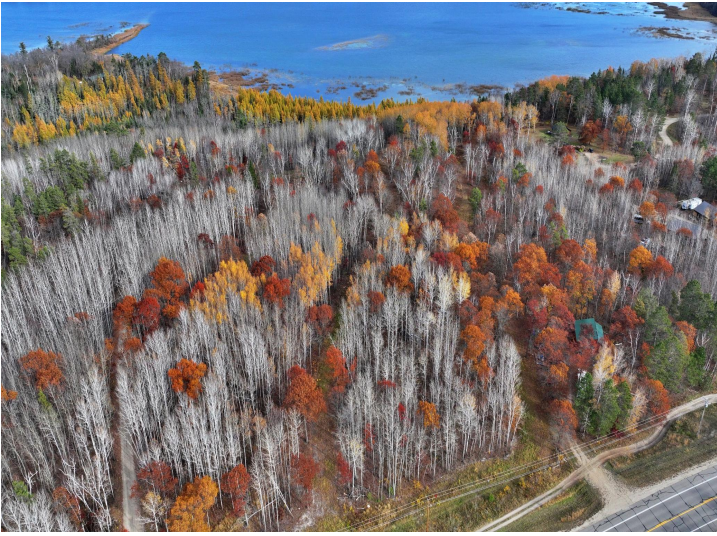
**Call Affinity Real Estate**

**218-237-3333**

**info@affinityrealestate.com**



**Affinity Real Estate - 600 Park Avenue South - Park Rapids MN 56470**



website: [www.AffinityRealEstate.com](http://www.AffinityRealEstate.com) | email: [info@affinityrealestate.com](mailto:info@affinityrealestate.com) | office: 218-237-3333 | fax: 218-237-3377



**\$124,900**  
MLS 6619974 Lake Land  
TBD County 4 - Lot 10  
Lake George MN 56458



website: [www.AffinityRealEstate.com](http://www.AffinityRealEstate.com) | email: [info@affinityrealestate.com](mailto:info@affinityrealestate.com) | office: 218-237-3333 | fax: 218-237-3377



**\$124,900**  
MLS 6619974 Lake Land  
TBD County 4 - Lot 10  
Lake George MN 56458



website: [www.AffinityRealEstate.com](http://www.AffinityRealEstate.com) | email: [info@affinityrealestate.com](mailto:info@affinityrealestate.com) | office: 218-237-3333 | fax:218-237-3377



**\$124,900**  
MLS 6619974 Lake Land  
TBD County 4 - Lot 10  
Lake George MN 56458