



MLS 6620144 Residential Income

\$189,900

Description:

Centrally located Bemidji duplex for sale! This property has been brought up to speed with recent updates, including a 2024 foundation repair by DBS with steel piers and beams carrying a 75-year warranty transferable to the new owner. Additional updates include five new Anderson windows and a new backdoor installed in fall 2023 with a transferable limited warranty. Other notable features include a metal roof, vinyl siding, 20x24 detached garage, and fenced backyard. A rental permit is in place for five unrelated persons to occupy this duplex, making it an ideal turn-key property for investors or those looking to expand their real estate portfolio.

Additional Details:

Year Built	1910
Lot Acres	0.16
Lot Dimensions	50x140
Garage Stalls	2
School District	31
Taxes	\$1,706
Taxes with Assessments	\$1,706
Tax Year	2024

Additional Features:

Basement: Block, Brick/Mortar **Fuel:** Natural Gas **Garage:** 2 **Heat:** Baseboard, Forced Air **Sewer:** City Sewer/Connected **Water:** City Water/Connected

Driving Directions:

5th St to Mississippi North 6 blocks home is on Left



Listed By:
218 Real Estate

Affinity Real Estate Inc. participates in the Regional Multiple Listing Service of Minnesota, Inc Broker Reciprocity (sm) program, allowing us to display other broker's listings on our website. All properties are subject to prior sale, change or withdrawal.



Call Affinity Real Estate

218-237-3333

info@affinityrealestate.com



Affinity Real Estate - 600 Park Avenue South - Park Rapids MN 56470



website: www.AffinityRealEstate.com | email: info@affinityrealestate.com | office: 218-237-3333 | fax: 218-237-3377

Affinity
REAL ESTATE INC

\$189,900
MLS 6620144 Residential
Income
1101 Mississippi Avenue
Bemidji MN 56601



website: www.AffinityRealEstate.com | email: info@affinityrealestate.com | office: 218-237-3333 | fax:218-237-3377



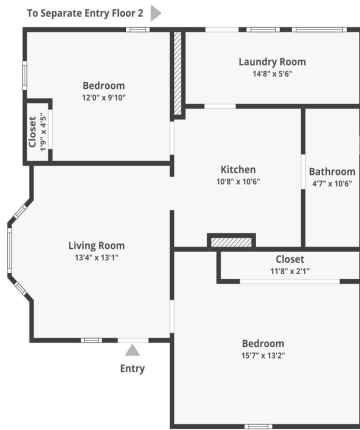
\$189,900
MLS 6620144 Residential
Income
1101 Mississippi Avenue
Bemidji MN 56601



website: www.AffinityRealEstate.com | email: info@affinityrealestate.com | office: 218-237-3333 | fax:218-237-3377



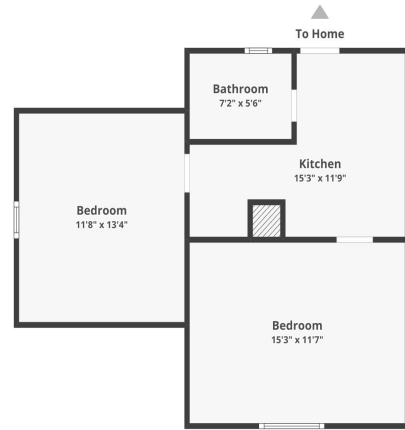
\$189,900
MLS 6620144 Residential
Income
1101 Mississippi Avenue
Bemidji MN 56601



1101 Mississippi Ave NW, Bemidji, MN 56601

Floor 1

Floor plan(s) cannot be used for building or design purposes. Size and dimensions are approximate.



1101 Mississippi Ave NW, Bemidji, MN 56601

Floor 2

Floor plan(s) cannot be used for building or design purposes. Size and dimensions are approximate.



website: www.AffinityRealEstate.com | email: info@affinityrealestate.com | office: 218-237-3333 | fax: 218-237-3377



\$189,900
 MLS 6620144 Residential
 Income
 1101 Mississippi Avenue
 Bemidji MN 56601