



MLS 6620357 Residential

\$204,900

976 sq ft
2 bedrooms
1 baths

6658 Mayflower Rd
Bemidji MN 56601

Status: Active

Description:

Discover your dream retreat in this beautifully appointed 2-bedroom, 1-bath home on a spacious 2.32-acre lot. Enjoy in-floor heating and high-end finishes throughout, complemented by a mini-split system for year-round comfort.

Nestled next to state land, this property offers privacy and endless outdoor opportunities. Perfect for a serene getaway or a permanent residence!

Additional Details:

Year Built	2024
Lot Acres	2.32
Lot Dimensions	2.32
School District	31
Taxes	\$12
Taxes with Assessments	(unreported)
Tax Year	2024

Additional Features:

Basement: None **Fuel:** Propane **Heat:** Boiler **Sewer:** Septic System Compliant - Yes **Water:** Private **Air Conditioning:** Geothermal, Heat Pump

Driving Directions:

West on Hwy 2. North on Eckles rd. Left on Mayflower.
Property on Rt.



Listed By:
218 Real Estate

Affinity Real Estate Inc. participates in the Regional Multiple Listing Service of Minnesota, Inc Broker Reciprocity (sm) program, allowing us to display other broker's listings on our website. All properties are subject to prior sale, change or withdrawal.



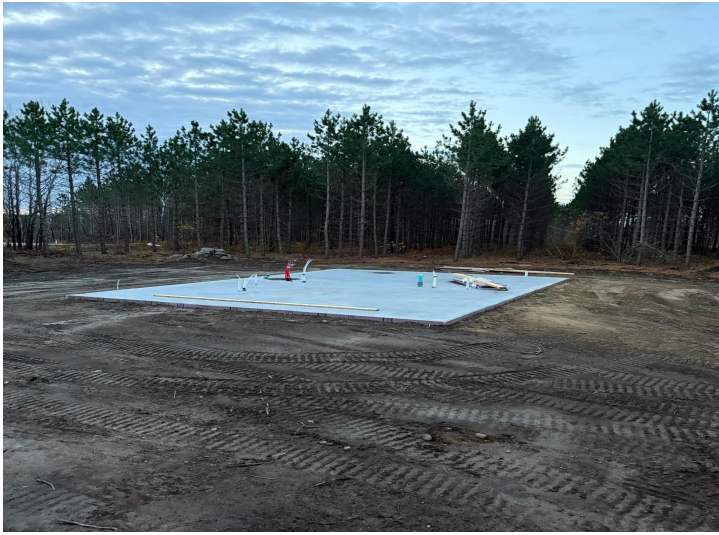
Call Affinity Real Estate

218-237-3333

info@affinityrealestate.com



Affinity Real Estate - 600 Park Avenue South - Park Rapids MN 56470



website: www.AffinityRealEstate.com | email: info@affinityrealestate.com | office: 218-237-3333 | fax:218-237-3377



\$204,900
MLS 6620357 Residential
6658 Mayflower Rd
Bemidji MN 56601