



MLS 6620576 Lake Home

\$569,900

1,650 sq ft
2 bedrooms
2 baths

31698 Large Pine Trail
Laporte MN 56461

Waterfront: Benedict

Status: Hold

Description:

This property is nestled in one of the prime locations of the Walker/Leech Lake area. With access to the spring-fed waters of Benedict Lake, you can enjoy all the fishing and recreational activities that Leech Lake offers. The Paul Bunyan State Forest is right at your back door, providing opportunities for tranquil walks, hunting, or endless ATV trails. Additionally, this property has a proven track record with excellent rental history in the past.

Additional Details:

Year Built	1979
Lot Acres	2.4
Lot Dimensions	Irregular
Garage Stalls	2
School District	113
Taxes	\$2,372
Taxes with Assessments	\$2,372
Tax Year	2024

Additional Features:

Fuel: Propane **Heat:** Forced Air, Wood Stove

Driving Directions:

At the intersection of Co Rd 38 & 39, just south of Benedict, go west on Co Rd 39 to a left on Parkway Forest Rd., take another left on Lady Slipper Sr. to Large Pine Dr., Follow signs.



Listed By:
Bill Hansen Realty/Walker

Affinity Real Estate Inc. participates in the Regional Multiple Listing Service of Minnesota, Inc Broker Reciprocity (sm) program, allowing us to display other broker's listings on our website. All properties are subject to prior sale, change or withdrawal.



Call Affinity Real Estate

218-237-3333

info@affinityrealestate.com



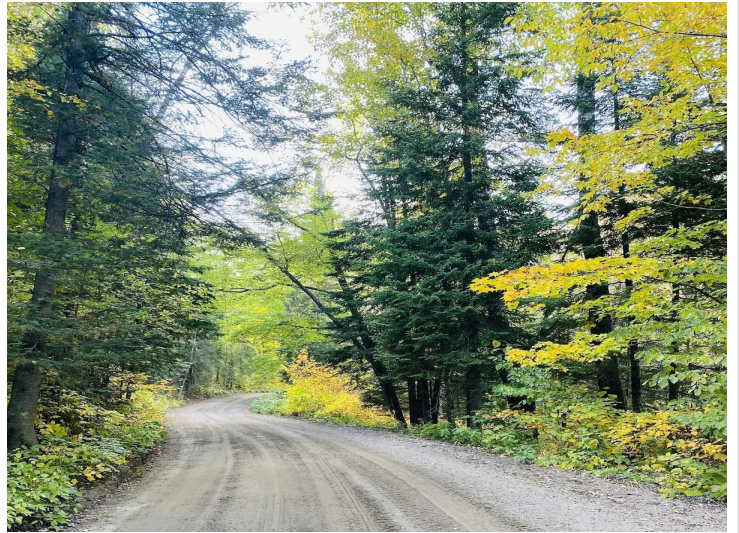
Affinity Real Estate - 600 Park Avenue South - Park Rapids MN 56470



website: www.AffinityRealEstate.com | email: info@affinityrealestate.com | office: 218-237-3333 | fax:218-237-3377



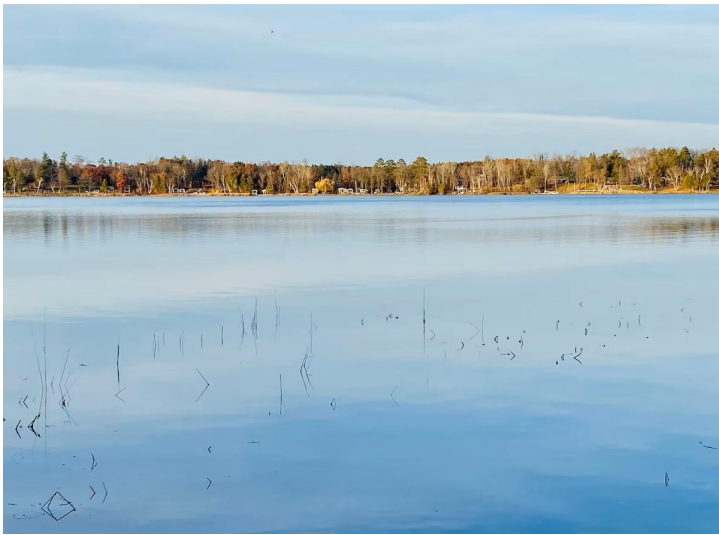
\$569,900
MLS 6620576 Lake Home
31698 Large Pine Trail
Laporte MN 56461



website: www.AffinityRealEstate.com | email: info@affinityrealestate.com | office: 218-237-3333 | fax:218-237-3377



\$569,900
MLS 6620576 Lake Home
31698 Large Pine Trail
Laporte MN 56461



website: www.AffinityRealEstate.com | email: info@affinityrealestate.com | office: 218-237-3333 | fax:218-237-3377



\$569,900
MLS 6620576 Lake Home
31698 Large Pine Trail
Laporte MN 56461



website: www.AffinityRealEstate.com | email: info@affinityrealestate.com | office: 218-237-3333 | fax:218-237-3377

Affinity
REAL ESTATE INC

\$569,900
MLS 6620576 Lake Home
31698 Large Pine Trail
Laporte MN 56461



website: www.AffinityRealEstate.com | email: info@affinityrealestate.com | office: 218-237-3333 | fax: 218-237-3377

Affinity
REAL ESTATE INC

\$569,900
MLS 6620576 Lake Home
31698 Large Pine Trail
Laporte MN 56461



website: www.AffinityRealEstate.com | email: info@affinityrealestate.com | office: 218-237-3333 | fax:218-237-3377

Affinity
REAL ESTATE INC

\$569,900
MLS 6620576 Lake Home
31698 Large Pine Trail
Laporte MN 56461



website: www.AffinityRealEstate.com | email: info@affinityrealestate.com | office: 218-237-3333 | fax:218-237-3377

Affinity
REAL ESTATE INC

\$569,900
MLS 6620576 Lake Home
31698 Large Pine Trail
Laporte MN 56461



website: www.AffinityRealEstate.com | email: info@affinityrealestate.com | office: 218-237-3333 | fax: 218-237-3377

Affinity
REAL ESTATE INC

\$569,900
MLS 6620576 Lake Home
31698 Large Pine Trail
Laporte MN 56461



website: www.AffinityRealEstate.com | email: info@affinityrealestate.com | office: 218-237-3333 | fax:218-237-3377



\$569,900
MLS 6620576 Lake Home
31698 Large Pine Trail
Laporte MN 56461