



MLS 6620800 Lake Home

**\$1,200,000**

2,492 sq ft  
3 bedrooms  
2 baths

615 Spain Drive  
Hackensack MN 56452

Waterfront: Woman (main lake)


Status: Active

**Description:**

This is an excellent opportunity to live on beautiful Spain Point on the coveted Woman Lake Chain, where you can enjoy 189 feet of shoreline and 1.25 acres of privacy. In 1973, a remarkable log home was crafted in Sweden, where master carpenters meticulously fit each log so precisely that no chinking was needed to seal the gaps. This architectural marvel was then carefully dismantled, transported across the Atlantic, and reassembled in Minnesota. Years later, the home underwent another transformation as it was lifted from its original foundation, allowing for a new, sturdy base to be laid and additional rooms to be seamlessly integrated into the structure. This blend of old-world craftsmanship and modern expansion has created a unique home that is a testament to timeless design and enduring quality. Upon entering the home, you will be captivated by its centerpiece—a see-through stone, wood-burning fireplace elegantly positioned between the kitchen and the great room. The great room's cozy fireplace and bay window bring warmth and natural light. Enjoy lake views from the large windows or step outside onto the massive wrap-around deck to watch the sunrise. The screened porch, which covers you in vaulted wood ceilings and skylights, has direct access to the owner's suite and the office, allowing you to fall asleep or work to the soothing sounds of the lake. The kitchen is thoughtfully designed, with an island and desk area that opens to the dining room that displays whole beam ceiling accents. The lower level features a walkout family room with a second wood-burning fireplace, a bedroom, a bathroom, and abundant storage space. There's also direct access to the tuck-under garage, perfect for storing off-season toys. The 3-car insulated garage has a heated/cooled bonus room with skylights that bring in natural light. This is an excellent place for another office or workout room. The outdoor offerings of this property are unparalleled. Explore the beautifully landscaped grounds, which include custom paved walkways, flower gardens, and tranquil paths that invite peaceful exploration. Woman Lake is part of a chain of lakes that include Girl and Child. This beautiful lake country also features multiple trail systems for year-round enjoyment, such as biking, hiking, and snowmobiling.

**Additional Details:**

Year Built	1990
Lot Acres	1.25
Lot Dimensions	189x340x136x261
Garage Stalls	3
School District	113
Taxes	\$6,216


 Listed By: **Heartland Estate**  
 Commission: \$6,282  
 Affinity Real Estate Inc. participates in the Regional Multiple Listing Service of Minnesota, Inc Broker Reciprocity (sm) program, allowing  
**Additional Features:**  
 Basement: 500 sq ft, Walkout, Finished, Full Bath, All-wood Deck, Garage  
 Complete Per Water Supply with Drawnch, Private, Well Air Conditioning: Ductless Mini-Split  
 Round Septic, Septic System



**Call Affinity Real Estate**  
**218-237-3333**  
**info@affinityrealestate.com**




**Affinity Real Estate - 600 Park Avenue South - Park Rapids MN 56470**

**Driving Directions:**



website: [www.AffinityRealEstate.com](http://www.AffinityRealEstate.com) | email: [info@affinityrealestate.com](mailto:info@affinityrealestate.com) | office: 218-237-3333 | fax: 218-237-3377

**Affinity**  
REAL ESTATE INC

**\$1,200,000**  
MLS 6620800 Lake Home  
615 Spain Drive  
Hackensack MN 56452



website: [www.AffinityRealEstate.com](http://www.AffinityRealEstate.com) | email: [info@affinityrealestate.com](mailto:info@affinityrealestate.com) | office: 218-237-3333 | fax:218-237-3377



**\$1,200,000**  
MLS 6620800 Lake Home  
615 Spain Drive  
Hackensack MN 56452



website: [www.AffinityRealEstate.com](http://www.AffinityRealEstate.com) | email: [info@affinityrealestate.com](mailto:info@affinityrealestate.com) | office: 218-237-3333 | fax:218-237-3377



**\$1,200,000**  
MLS 6620800 Lake Home  
615 Spain Drive  
Hackensack MN 56452



website: [www.AffinityRealEstate.com](http://www.AffinityRealEstate.com) | email: [info@affinityrealestate.com](mailto:info@affinityrealestate.com) | office: 218-237-3333 | fax:218-237-3377

**Affinity**  
REAL ESTATE INC

**\$1,200,000**  
MLS 6620800 Lake Home  
615 Spain Drive  
Hackensack MN 56452



website: [www.AffinityRealEstate.com](http://www.AffinityRealEstate.com) | email: [info@affinityrealestate.com](mailto:info@affinityrealestate.com) | office: 218-237-3333 | fax:218-237-3377

**Affinity**  
REAL ESTATE INC

**\$1,200,000**  
MLS 6620800 Lake Home  
615 Spain Drive  
Hackensack MN 56452



website: [www.AffinityRealEstate.com](http://www.AffinityRealEstate.com) | email: [info@affinityrealestate.com](mailto:info@affinityrealestate.com) | office: 218-237-3333 | fax: 218-237-3377

**Affinity**  
REAL ESTATE INC

**\$1,200,000**  
MLS 6620800 Lake Home  
615 Spain Drive  
Hackensack MN 56452

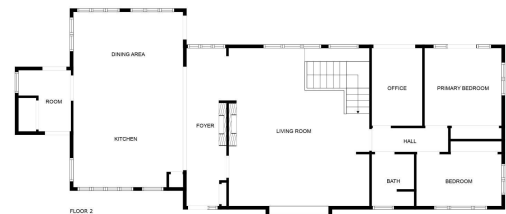


website: [www.AffinityRealEstate.com](http://www.AffinityRealEstate.com) | email: [info@affinityrealestate.com](mailto:info@affinityrealestate.com) | office: 218-237-3333 | fax:218-237-3377



**\$1,200,000**  
MLS 6620800 Lake Home  
615 Spain Drive  
Hackensack MN 56452





FLOOR PLAN CREATED BY CURSCASA APP. MEASUREMENTS DEEMED HIGHLY RELIABLE BUT NOT GUARANTEED.

website: [www.AffinityRealEstate.com](http://www.AffinityRealEstate.com) | email: [info@affinityrealestate.com](mailto:info@affinityrealestate.com) | office: 218-237-3333 | fax: 218-237-3377

**Affinity**  
REAL ESTATE INC

**\$1,200,000**  
MLS 6620800 Lake Home  
615 Spain Drive  
Hackensack MN 56452