



MLS 6620859 Land

**\$34,900**

5.03 Acres  
Finished Lot(s)

XXX County 77  
Wadena MN 56482

Status: Active

**Description:**

5 scenic acres tucked away in a new rural development limited to just a handful of properties. Are you looking to build your next home, need an ideal place for a storage building or seeking a recreational landing spot? If so, this is an absolute contender. The entire north boundary is protected by a beautiful stand of pines providing a perfect blanket of privacy. The balance is level and build ready. Awesome location just 4 miles from Wadena's town center. Surveyed. Light covenants apply.

**Additional Details:**

|                        |              |
|------------------------|--------------|
| Lot Acres              | 5.03         |
| Lot Dimensions         | 575 x 381    |
| School District        | 2155         |
| Taxes                  | (unreported) |
| Taxes with Assessments | (unreported) |
| Tax Year               | 2024         |

**Additional Features:**

**Driving Directions:**

From Colfax Ave @ Jefferson St (Hwy 71): Go East on Colfax (turns to State 29) 4 miles to a right on County 77. Go 1/2 mile to a unnamed road on right. Proceed to lot at end of cul-de-sac.



Listed By:  
Affinity Real Estate Inc.

Affinity Real Estate Inc. participates in the Regional Multiple Listing Service of Minnesota, Inc Broker Reciprocity (sm) program, allowing us to display other broker's listings on our website. All properties are subject to prior sale, change or withdrawal.



**Call Affinity Real Estate**  
**218-237-3333**  
**info@affinityrealestate.com**



**Affinity Real Estate - 600 Park Avenue South - Park Rapids MN 56470**



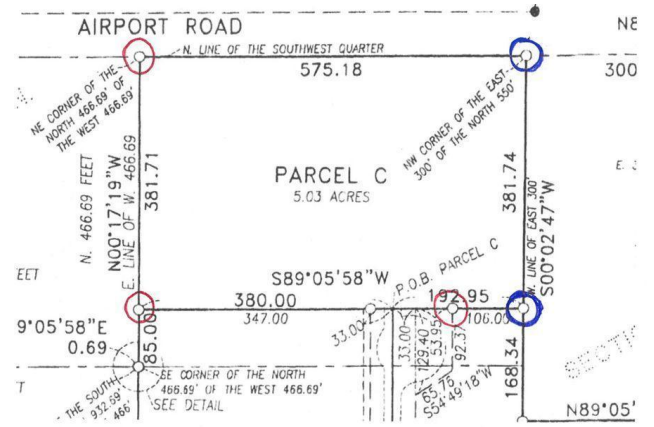


website: [www.AffinityRealEstate.com](http://www.AffinityRealEstate.com) | email: [info@affinityrealestate.com](mailto:info@affinityrealestate.com) | office: 218-237-3333 | fax: 218-237-3377



**\$34,900**  
MLS 6620859 Land  
XXX County 77  
Wadena MN 56482





○ = Flagged in blaze orange tape  
 ○ = Not flagged

website: [www.AffinityRealEstate.com](http://www.AffinityRealEstate.com) | email: [info@affinityrealestate.com](mailto:info@affinityrealestate.com) | office: 218-237-3333 | fax: 218-237-3377



**\$34,900**  
 MLS 6620859 Land  
 XXX County 77  
 Wadena MN 56482