



MLS 6621051 Residential

**\$395,000**

963 sq ft  
2 bedrooms  
1 baths

6774 Kabekona Bay Drive  
Walker MN 56484

Status: Active

#### Description:

Exceptionally maintained cabin in a Planned Unit Development of Kabekona Bay Estates of Leech Lake. This home has a BRAND NEW 28x28 garage with loft. Home was built in 2002 and has new windows installed in 2023 and a new roof in 2024! The furnace and central air were new in the last 10 years. Huge 23x10 deck on cabin gives great views to Kabekona Bay Lake. Septic and well are part of and maintained by the association. There are only six homes in this association and every home is different than the next offering a unique and beautiful development. Common access to a Protected Harbor! No need to pull out the boat lift in the winter. This is rare on Leech Lake to have a protected harbor! Common Dock is included as well. All of this can be accessed across County Road 38 by common path. Right across the street is the 133 mile Paul Bunyan Trail! The home has two heat sources with a forced air furnace and fireplace on main floor. Central Air is also included! Lofted area was used as the main bedroom, but the main floor bedroom offers all facilities on the main floor. So close to Walker, MN within 3 miles! This cabin and water access gives you 117,000 acres of lake access on the phenomenal Kabekona Bay of Leech Lake!

#### Additional Details:

Year Built	2002
Lot Acres	0.06
Lot Dimensions	1760
Garage Stalls	2
School District	113
Taxes	\$1,024
Taxes with Assessments	\$1,090
Tax Year	2024

#### Additional Features:

**Basement:** Crawl Space **Fuel:** Propane **Garage:** 2 **Heat:** Forced Air, Fireplace(s) **Sewer:** Septic System Compliant - Yes, Shared Septic, Tank with Drainage Field **Water:** Drilled, Shared System, Well **Air Conditioning:** Central Air

#### Driving Directions:

Follow MN-200/HWY-371 2.1 miles to County Road 38 and turn left. Follow 1.3 miles turn left onto 68th Ave NW. Turn left onto Kabekona Bay Dr NW



Listed By:  
Premium Properties Realty

Affinity Real Estate Inc. participates in the Regional Multiple Listing Service of Minnesota, Inc Broker Reciprocity (sm) program, allowing us to display other broker's listings on our website. All properties are subject to prior sale, change or withdrawal.



**Call Affinity Real Estate**

**218-237-3333**

**info@affinityrealestate.com**



**Affinity Real Estate - 600 Park Avenue South - Park Rapids MN 56470**





website: [www.AffinityRealEstate.com](http://www.AffinityRealEstate.com) | email: [info@affinityrealestate.com](mailto:info@affinityrealestate.com) | office: 218-237-3333 | fax: 218-237-3377

**Affinity**  
REAL ESTATE INC

**\$395,000**  
MLS 6621051 Residential  
6774 Kabekona Bay Drive  
Walker MN 56484





website: [www.AffinityRealEstate.com](http://www.AffinityRealEstate.com) | email: [info@affinityrealestate.com](mailto:info@affinityrealestate.com) | office: 218-237-3333 | fax: 218-237-3377

**Affinity**  
REAL ESTATE INC

**\$395,000**

MLS 6621051 Residential  
6774 Kabekona Bay Drive  
Walker MN 56484





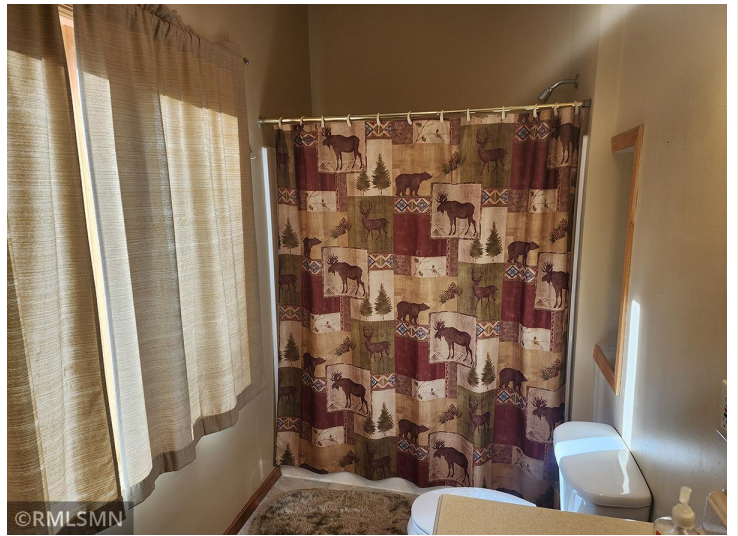
website: [www.AffinityRealEstate.com](http://www.AffinityRealEstate.com) | email: [info@affinityrealestate.com](mailto:info@affinityrealestate.com) | office: 218-237-3333 | fax: 218-237-3377

**Affinity**  
REAL ESTATE INC

**\$395,000**

MLS 6621051 Residential  
6774 Kabekona Bay Drive  
Walker MN 56484



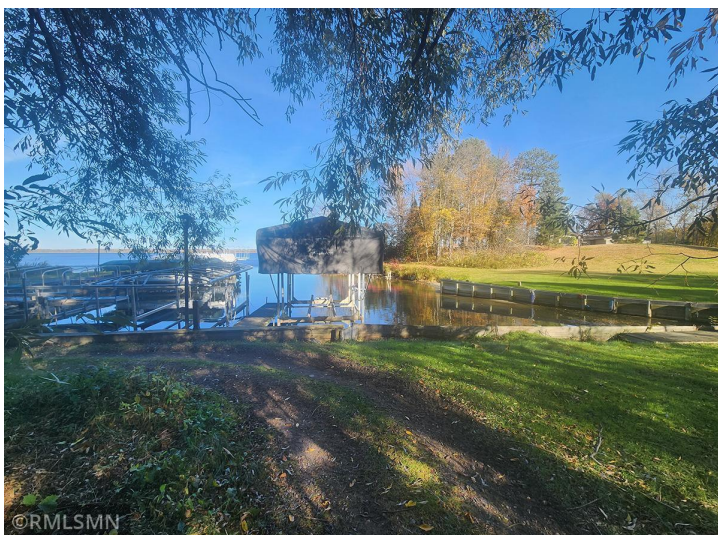
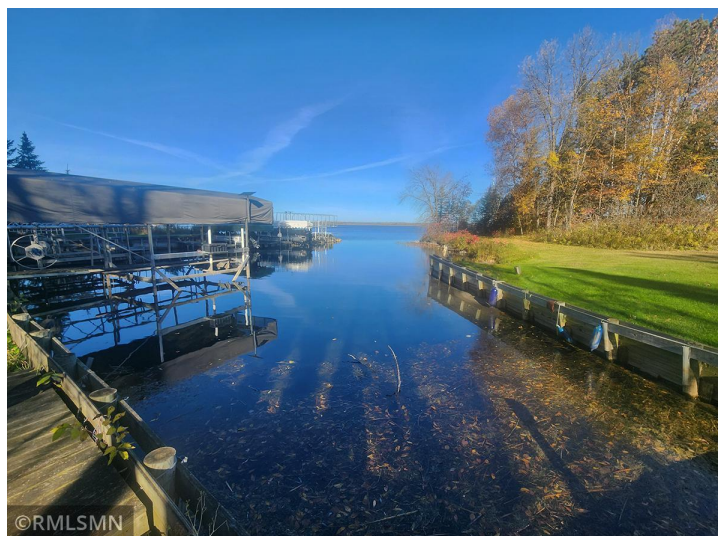


website: [www.AffinityRealEstate.com](http://www.AffinityRealEstate.com) | email: [info@affinityrealestate.com](mailto:info@affinityrealestate.com) | office: 218-237-3333 | fax: 218-237-3377

**Affinity**  
REAL ESTATE INC

**\$395,000**  
MLS 6621051 Residential  
6774 Kabekona Bay Drive  
Walker MN 56484





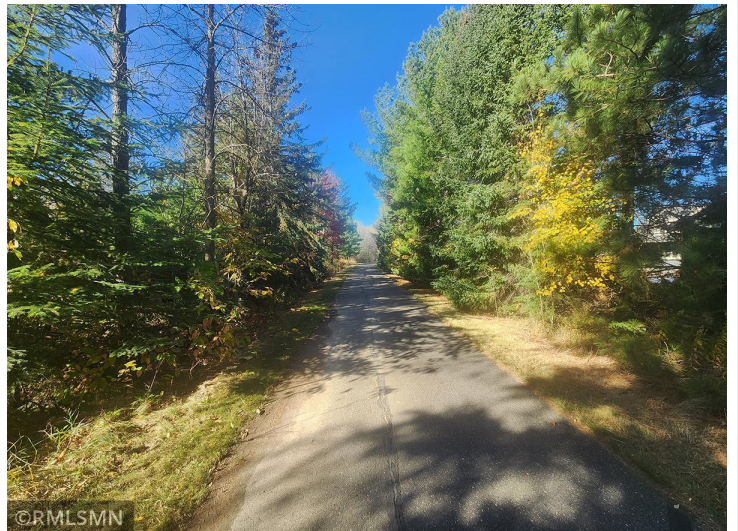
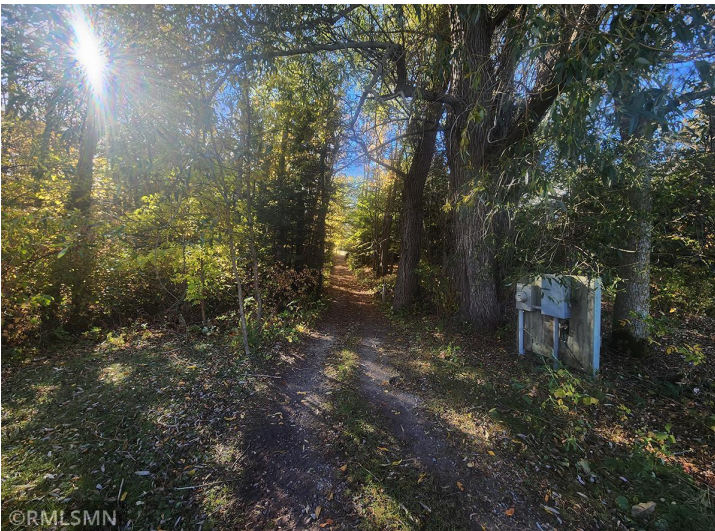
website: [www.AffinityRealEstate.com](http://www.AffinityRealEstate.com) | email: [info@affinityrealestate.com](mailto:info@affinityrealestate.com) | office: 218-237-3333 | fax: 218-237-3377



**\$395,000**

MLS 6621051 Residential  
6774 Kabekona Bay Drive  
Walker MN 56484





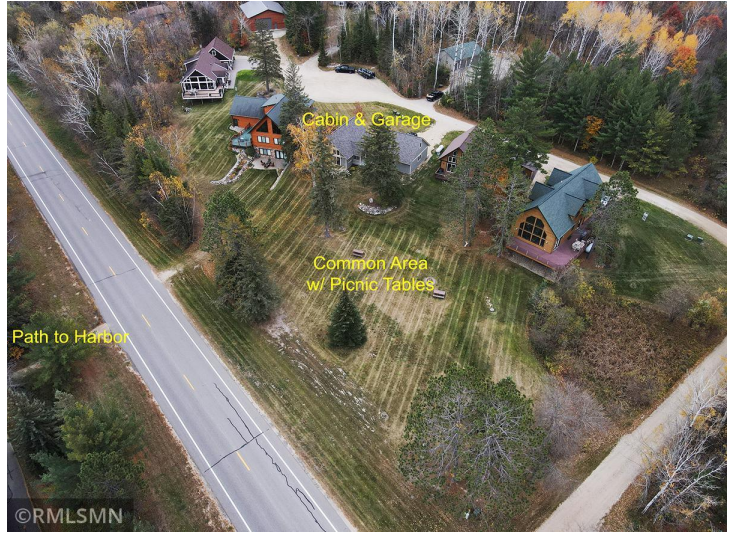
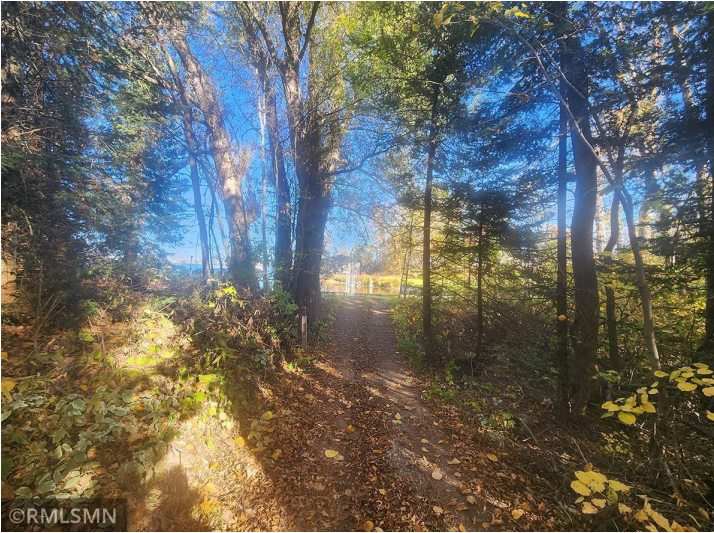
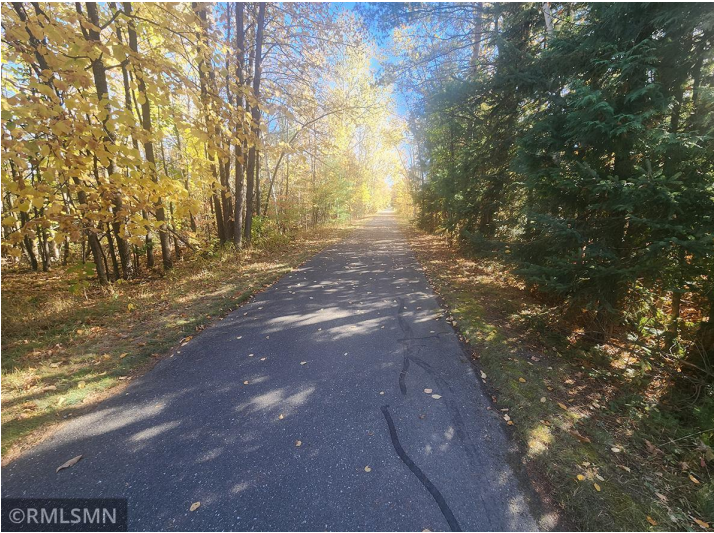
website: [www.AffinityRealEstate.com](http://www.AffinityRealEstate.com) | email: [info@affinityrealestate.com](mailto:info@affinityrealestate.com) | office: 218-237-3333 | fax: 218-237-3377

**Affinity**  
REAL ESTATE INC

**\$395,000**

MLS 6621051 Residential  
6774 Kabekona Bay Drive  
Walker MN 56484





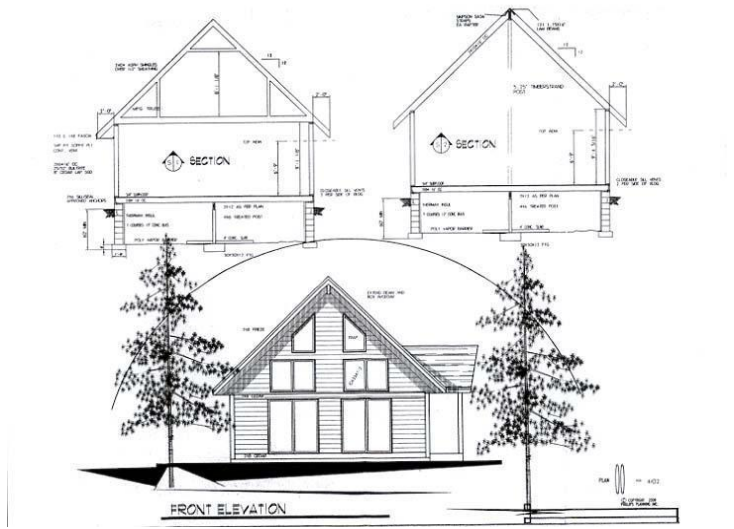
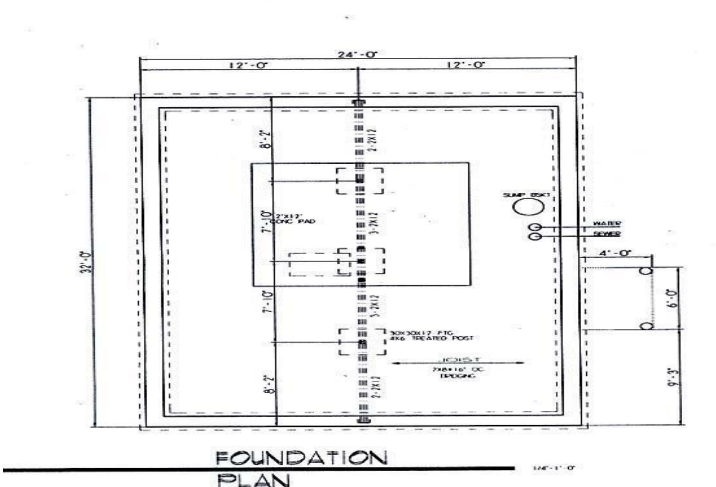
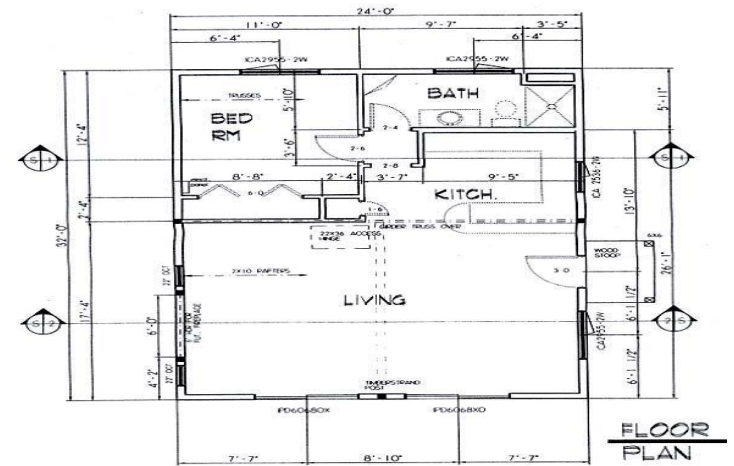
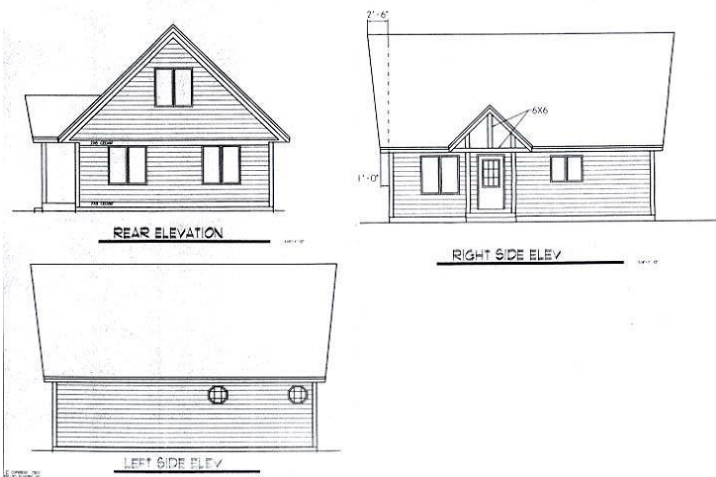
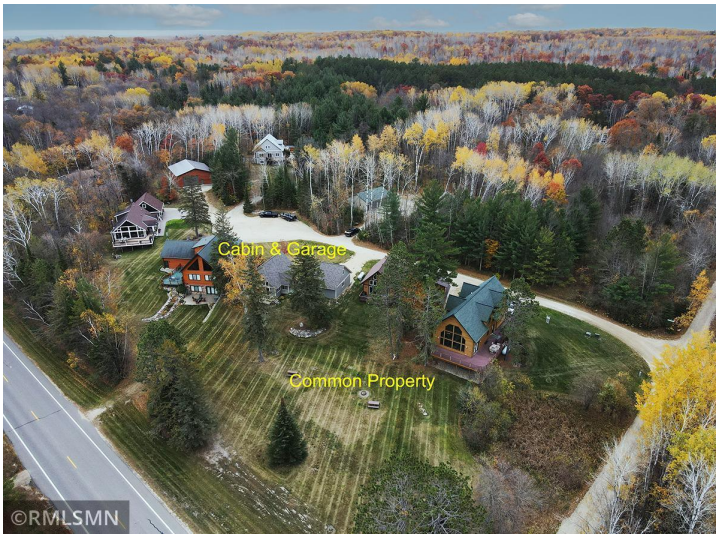
website: [www.AffinityRealEstate.com](http://www.AffinityRealEstate.com) | email: [info@affinityrealestate.com](mailto:info@affinityrealestate.com) | office: 218-237-3333 | fax: 218-237-3377



**\$395,000**

MLS 6621051 Residential  
6774 Kabekona Bay Drive  
Walker MN 56484





website: [www.AffinityRealEstate.com](http://www.AffinityRealEstate.com) | email: [info@affinityrealestate.com](mailto:info@affinityrealestate.com) | office: 218-237-3333 | fax: 218-237-3377

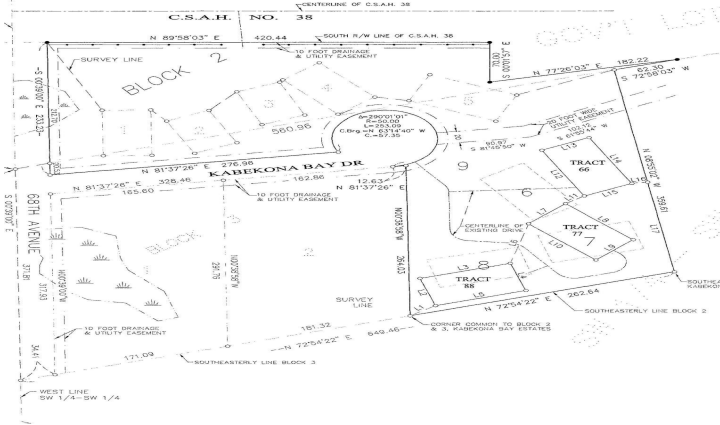
**Affinity**  
REAL ESTATE INC

**\$395,000**  
MLS 6621051 Residential  
6774 Kabekona Bay Drive  
Walker MN 56484



# CERTIFICATE OF SURVEY

PART OF LOTS 6, 7, 8, & 9, BLOCK 2, KABEKONA BAY ESTATES,  
SECTION 8, TOWNSHIP 142 NORTH, RANGE 31 WEST,  
CASS COUNTY, MINNESOTA



website: [www.AffinityRealEstate.com](http://www.AffinityRealEstate.com) | email: [info@affinityrealestate.com](mailto:info@affinityrealestate.com) | office: 218-237-3333 | fax: 218-237-3377



**\$395,000**

MLS 6621051 Residential  
6774 Kabekona Bay Drive  
Walker MN 56484