



MLS 6621323 Land

\$84,900

5.5 Acres
Finished Lot(s)

TBD County Road 38
Walker MN 56484

Status: Active

Description:

5.5 acre lot with giant mature trees just off Kabekona Bay of Leech Lake. Lot abuts the Bike Trail and then 25' off the other side of the trail is the lake. As you are crossing public land you can't put in a dock but it would make great access for canoeing, snow mobiling or an ice house. Also, there are massive acres of US Forestry Land just across the road with fine hunting. Lot boasts several pretty building sites along with a natural spring/creek. It has no covenants or restrictions so you could build a beautiful home/cabin or just pull in a 5th wheel to camp. With Electric at the street, public boat launch nearby and literally 4 minutes drive to Walker this is an economical to enjoy all the fun and beauty of the Leech Lake Area

Additional Details:

| | |
|------------------------|-----------|
| Lot Acres | 5.5 |
| Lot Dimensions | Irregular |
| School District | 113 |
| Taxes | \$74 |
| Taxes with Assessments | \$74 |
| Tax Year | 2024 |

Additional Features:

Driving Directions:

Go NW on 371 2.5 miles to a left on County 38. Proceed 1.5 miles just past blue home #6828. Sign will be on the right side of the road at the entrance..



Listed By:
Cedar Point Realty -Walker

Affinity Real Estate Inc. participates in the Regional Multiple Listing Service of Minnesota, Inc Broker Reciprocity (sm) program, allowing us to display other broker's listings on our website. All properties are subject to prior sale, change or withdrawal.



Call Affinity Real Estate

218-237-3333

info@affinityrealestate.com



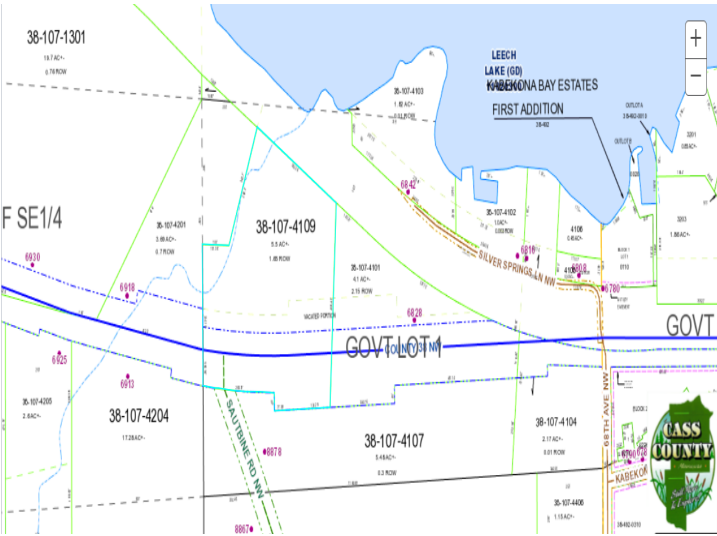
Affinity Real Estate - 600 Park Avenue South - Park Rapids MN 56470



website: www.AffinityRealEstate.com | email: info@affinityrealestate.com | office: 218-237-3333 | fax:218-237-3377



\$84,900
MLS 6621323 Land
TBD County Road 38
Walker MN 56484



website: www.AffinityRealEstate.com | email: info@affinityrealestate.com | office: 218-237-3333 | fax: 218-237-3377



\$84,900
 MLS 6621323 Land
 TBD County Road 38
 Walker MN 56484