



MLS 6622033 Residential

**\$339,000**

2,604 sq ft  
4 bedrooms  
2 baths

4331 Pincherry Road  
Bemidji MN 56601

Status: Active

**Description:**

This updated 4BR/2BA home sits on a very private 7+ acre wooded lot with trails for hiking and land for hunting. Enjoy the large custom kitchen, main living area and both beautifully remodeled bathrooms. Large back deck that's perfect for entertaining. Great lower level family room with custom fireplace and large bedrooms. New flooring throughout both levels and stairs. Heated double attached garage and single detached garage. This is a must see for anyone seeking an updated home with beautiful private wooded land for hiking/hunting, outdoor storage and directly across the road from state owned land.

**Additional Details:**

Year Built	1982
Lot Acres	7.44
Lot Dimensions	639x238x639x671x161
Garage Stalls	3
School District	31
Taxes	\$2,780
Taxes with Assessments	\$2,780
Tax Year	2024

**Additional Features:**

**Basement:** Block, Egress Window(s), Finished, Full **Fuel:** Propane, Wood **Garage:** 3 **Heat:** Forced Air, Fireplace(s) **Sewer:** Private Sewer **Water:** Private, Well **Air Conditioning:** Central Air

**Driving Directions:**

North on Lake Ave, right on Big Bass Rd, left on Little Bass Rd, left on Pincherry Rd. #4331 on the left.



Listed By:  
Century 21 Dickinson

Affinity Real Estate Inc. participates in the Regional Multiple Listing Service of Minnesota, Inc Broker Reciprocity (sm) program, allowing us to display other broker's listings on our website. All properties are subject to prior sale, change or withdrawal.



**Call Affinity Real Estate**

**218-237-3333**

**info@affinityrealestate.com**



**Affinity Real Estate - 600 Park Avenue South - Park Rapids MN 56470**



website: [www.AffinityRealEstate.com](http://www.AffinityRealEstate.com) | email: [info@affinityrealestate.com](mailto:info@affinityrealestate.com) | office: 218-237-3333 | fax: 218-237-3377

**Affinity**  
REAL ESTATE INC

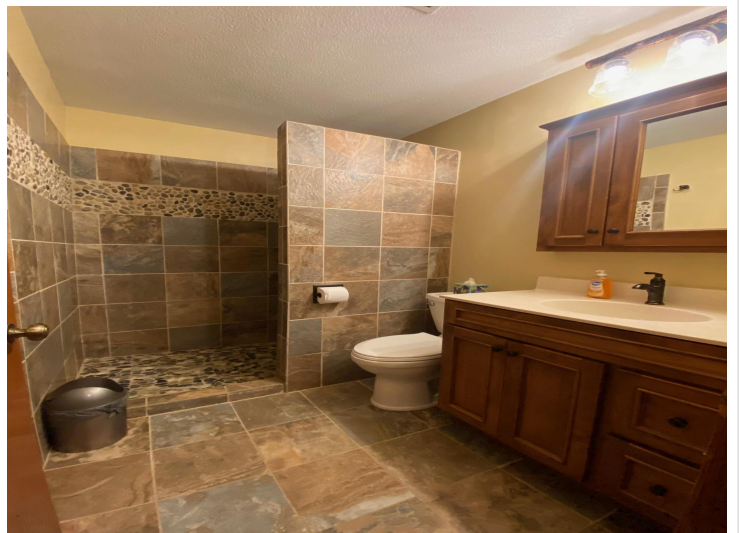
**\$339,000**  
MLS 6622033 Residential  
4331 Pincherry Road  
Bemidji MN 56601



website: [www.AffinityRealEstate.com](http://www.AffinityRealEstate.com) | email: [info@affinityrealestate.com](mailto:info@affinityrealestate.com) | office: 218-237-3333 | fax:218-237-3377

**Affinity**  
REAL ESTATE INC

**\$339,000**  
MLS 6622033 Residential  
4331 Pincherry Road  
Bemidji MN 56601



website: [www.AffinityRealEstate.com](http://www.AffinityRealEstate.com) | email: [info@affinityrealestate.com](mailto:info@affinityrealestate.com) | office: 218-237-3333 | fax:218-237-3377

**Affinity**  
REAL ESTATE INC

**\$339,000**  
MLS 6622033 Residential  
4331 Pincherry Road  
Bemidji MN 56601



website: [www.AffinityRealEstate.com](http://www.AffinityRealEstate.com) | email: [info@affinityrealestate.com](mailto:info@affinityrealestate.com) | office: 218-237-3333 | fax:218-237-3377



**\$339,000**  
MLS 6622033 Residential  
4331 Pincherry Road  
Bemidji MN 56601



website: [www.AffinityRealEstate.com](http://www.AffinityRealEstate.com) | email: [info@affinityrealestate.com](mailto:info@affinityrealestate.com) | office: 218-237-3333 | fax:218-237-3377



**\$339,000**  
MLS 6622033 Residential  
4331 Pincherry Road  
Bemidji MN 56601



website: [www.AffinityRealEstate.com](http://www.AffinityRealEstate.com) | email: [info@affinityrealestate.com](mailto:info@affinityrealestate.com) | office: 218-237-3333 | fax:218-237-3377



**\$339,000**  
MLS 6622033 Residential  
4331 Pincherry Road  
Bemidji MN 56601



website: [www.AffinityRealEstate.com](http://www.AffinityRealEstate.com) | email: [info@affinityrealestate.com](mailto:info@affinityrealestate.com) | office: 218-237-3333 | fax:218-237-3377



**\$339,000**  
MLS 6622033 Residential  
4331 Pincherry Road  
Bemidji MN 56601