

MLS 6622084 Land

\$65,000

7.2 Acres
Raw Land

TBD State Hwy 371
Laporte MN 56461

Status: Active

Description:

600 ft frontage on Hwy 371 just 8 min North of Walker. 7.2 acres (600x525), fully wooded (laden with mature white oaks and scattered white pine, parklike), nicely private (no close neighbors), flat as a pancake (no need for reshaping & costly excavation). Perfect for a home business or business that benefits from the excellent traffic exposure of Hwy 371. Plus 3 phase electric power all along the 600' of Hwy frontage. Or simply a great place for your up north cabin or home. Close to Leech Lake and Steamboat Lake public accesses. Exceptional, beautiful and well located property.

Additional Details:

Lot Acres	7.2
Lot Dimensions	600x525x600x525
School District	306
Taxes	(unreported)
Taxes with Assessments	(unreported)
Tax Year	2024

Additional Features:

Driving Directions:

From Walker, go 8 miles North on Hwy 371, property on right side, sign on property.



Listed By:
askRICK.com dba Walker Area Realty

Affinity Real Estate Inc. participates in the Regional Multiple Listing Service of Minnesota, Inc Broker Reciprocity (sm) program, allowing us to display other broker's listings on our website. All properties are subject to prior sale, change or withdrawal.



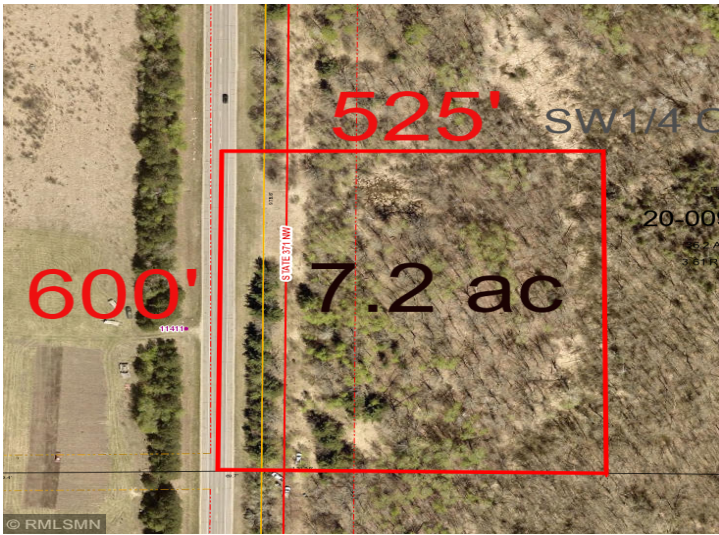
Call Affinity Real Estate

218-237-3333

info@affinityrealestate.com



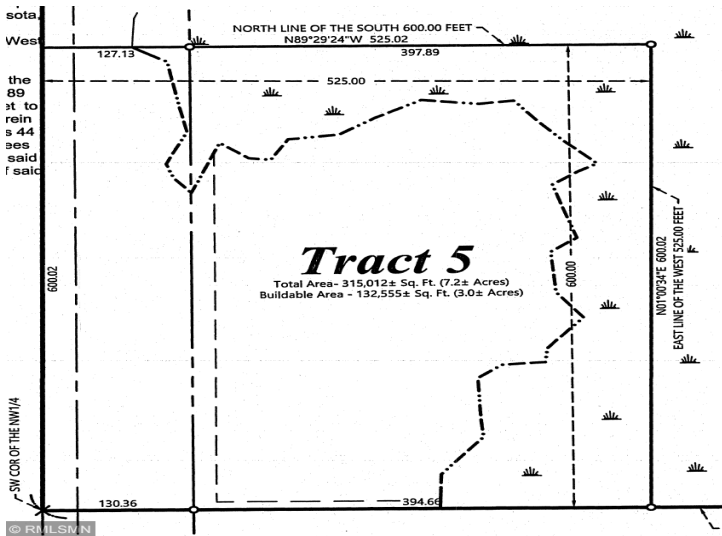
Affinity Real Estate - 600 Park Avenue South - Park Rapids MN 56470



website: www.AffinityRealEstate.com | email: info@affinityrealestate.com | office: 218-237-3333 | fax: 218-237-3377



\$65,000
MLS 6622084 Land
TBD State Hwy 371
Laporte MN 56461



website: www.AffinityRealEstate.com | email: info@affinityrealestate.com | office: 218-237-3333 | fax: 218-237-3377



\$65,000
 MLS 6622084 Land
 TBD State Hwy 371
 Laporte MN 56461