



MLS 6622252 Residential

\$269,900

1,200 sq ft
4 bedrooms
1 baths

4340 County Road 1
Pine River MN 56474

Status: Coming Soon

Description:

Escape to your own outdoor paradise with this newly renovated 4-bedroom, 1-bathroom country home in Gail Lake Township. Set on 10 private acres, this property is a dream for nature lovers and hunters alike. The home features a new roof, adding long-term value and peace of mind, and has been completely updated throughout. For those who love projects or need extra storage, the property includes a spacious 24' x 36' garage along with a 20' x 24' insulated workshop—perfect for year-round use. Outdoors, you'll find a fully outfitted deer stand and expansive land that backs up to thousands of acres of public land, providing some of the best whitetail hunting opportunities right outside your door. With easy access on blacktop frontage and nestled between the Pine River and Whitefish Chain of Lakes, this property is not only a hunting haven but also a gateway to countless recreational activities. Whether you're an avid hunter or seeking a peaceful retreat, this Northwoods gem has it all.

Additional Details:

Year Built	1967
Lot Acres	10
Lot Dimensions	331x1320
Garage Stalls	3
School District	2174
Taxes	\$630
Taxes with Assessments	\$630
Tax Year	2024

Additional Features:

Basement: None **Fuel:** Electric, Propane **Garage:** 3 **Heat:** Baseboard, Boiler **Sewer:** Tank with Drainage Field **Water:** Well **Air Conditioning:** None

Driving Directions:

4 miles east of Pine River on C.R. #1 to 4340 on left.



Listed By:
eXp Realty

Affinity Real Estate Inc. participates in the Regional Multiple Listing Service of Minnesota, Inc Broker Reciprocity (sm) program, allowing us to display other broker's listings on our website. All properties are subject to prior sale, change or withdrawal.



Call Affinity Real Estate
218-237-3333
info@affinityrealestate.com

Affinity Real Estate - 600 Park Avenue South - Park Rapids MN 56470



website: www.AffinityRealEstate.com | email: info@affinityrealestate.com | office: 218-237-3333 | fax:218-237-3377



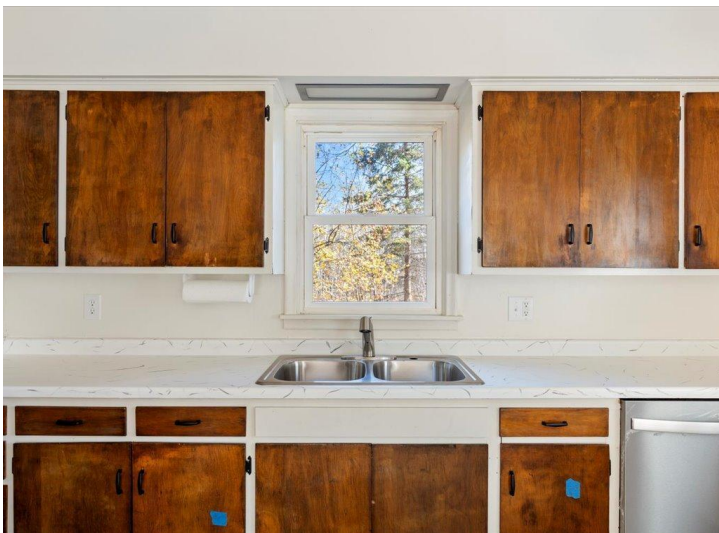
\$269,900
MLS 6622252 Residential
4340 County Road 1
Pine River MN 56474



website: www.AffinityRealEstate.com | email: info@affinityrealestate.com | office: 218-237-3333 | fax:218-237-3377

Affinity
REAL ESTATE INC

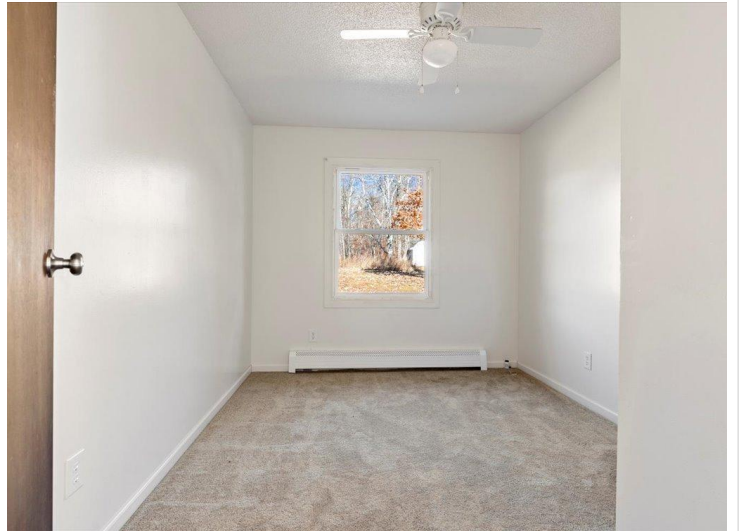
\$269,900
MLS 6622252 Residential
4340 County Road 1
Pine River MN 56474



website: www.AffinityRealEstate.com | email: info@affinityrealestate.com | office: 218-237-3333 | fax:218-237-3377



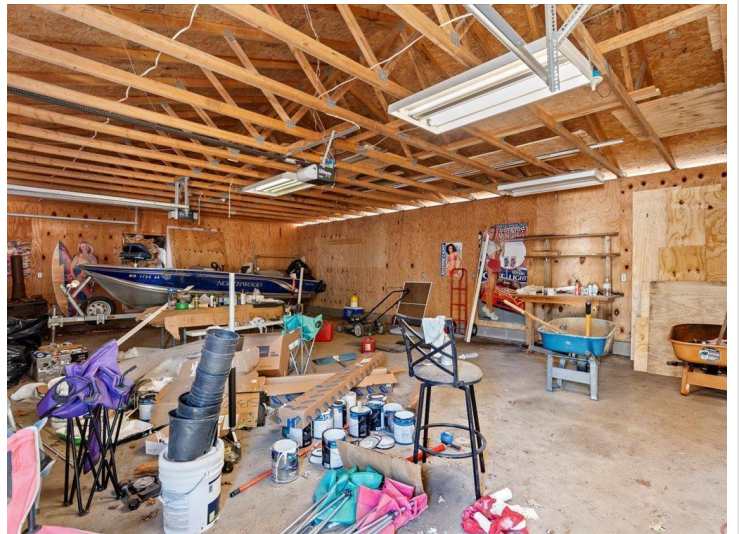
\$269,900
MLS 6622252 Residential
4340 County Road 1
Pine River MN 56474



website: www.AffinityRealEstate.com | email: info@affinityrealestate.com | office: 218-237-3333 | fax:218-237-3377



\$269,900
MLS 6622252 Residential
4340 County Road 1
Pine River MN 56474



website: www.AffinityRealEstate.com | email: info@affinityrealestate.com | office: 218-237-3333 | fax: 218-237-3377

Affinity
REAL ESTATE INC

\$269,900
MLS 6622252 Residential
4340 County Road 1
Pine River MN 56474



website: www.AffinityRealEstate.com | email: info@affinityrealestate.com | office: 218-237-3333 | fax:218-237-3377

Affinity
REAL ESTATE INC

\$269,900
MLS 6622252 Residential
4340 County Road 1
Pine River MN 56474



website: www.AffinityRealEstate.com | email: info@affinityrealestate.com | office: 218-237-3333 | fax: 218-237-3377



\$269,900
MLS 6622252 Residential
4340 County Road 1
Pine River MN 56474



website: www.AffinityRealEstate.com | email: info@affinityrealestate.com | office: 218-237-3333 | fax:218-237-3377



\$269,900
MLS 6622252 Residential
4340 County Road 1
Pine River MN 56474



website: www.AffinityRealEstate.com | email: info@affinityrealestate.com | office: 218-237-3333 | fax:218-237-3377



\$269,900
MLS 6622252 Residential
4340 County Road 1
Pine River MN 56474