



MLS 6622477 Lake Home

\$389,800

2,240 sq ft
3 bedrooms
2 baths

9741 Quetzal Drive
Solway MN 56678

Waterfront: Big LaSalle

Status: Active

Description:

Welcome to your tranquil escape on Big LaSalle Lake! This maintenance-free home offers the perfect blend of privacy and peacefulness, set against the backdrop of crystal-clear, sand-bottom waters. Whether you're looking for a quiet getaway or an ideal spot for fishing, this property is a true gem.

Enjoy breathtaking, west-facing sunsets from the huge deck, where the elevation provides stunning panoramic views of the lake. The home has been meticulously maintained and is move-in ready, allowing you to relax and soak in the picturesque surroundings. With its prime location and serene ambiance, this is your opportunity to own a piece of paradise!

Additional Details:

Year Built	2006
Lot Acres	2.77
Lot Dimensions	150x814x150x793
School District	31
Taxes	\$1,794
Taxes with Assessments	\$1,794
Tax Year	2024

Additional Features:

Fuel: Propane **Heat:** Boiler, Forced Air

Driving Directions:

From Becida go south on Cty 3. Turn right on 430th St. Follow to 105th Ave and turn right. Go to Quetzal dr on the right. Take left on Quetzal dr. Follow to end of road property is on the right.



Listed By:
218 Real Estate

Affinity Real Estate Inc. participates in the Regional Multiple Listing Service of Minnesota, Inc Broker Reciprocity (sm) program, allowing us to display other broker's listings on our website. All properties are subject to prior sale, change or withdrawal.



Call Affinity Real Estate

218-237-3333

info@affinityrealestate.com



Affinity Real Estate - 600 Park Avenue South - Park Rapids MN 56470



website: www.AffinityRealEstate.com | email: info@affinityrealestate.com | office: 218-237-3333 | fax: 218-237-3377

Affinity
REAL ESTATE INC

\$389,800
MLS 6622477 Lake Home
9741 Quetzal Drive
Solway MN 56678



website: www.AffinityRealEstate.com | email: info@affinityrealestate.com | office: 218-237-3333 | fax:218-237-3377



\$389,800
MLS 6622477 Lake Home
9741 Quetzal Drive
Solway MN 56678



website: www.AffinityRealEstate.com | email: info@affinityrealestate.com | office: 218-237-3333 | fax:218-237-3377



\$389,800
MLS 6622477 Lake Home
9741 Quetzal Drive
Solway MN 56678



website: www.AffinityRealEstate.com | email: info@affinityrealestate.com | office: 218-237-3333 | fax:218-237-3377

Affinity
REAL ESTATE INC

\$389,800
MLS 6622477 Lake Home
9741 Quetzal Drive
Solway MN 56678



website: www.AffinityRealEstate.com | email: info@affinityrealestate.com | office: 218-237-3333 | fax: 218-237-3377

Affinity
REAL ESTATE INC

\$389,800
MLS 6622477 Lake Home
9741 Quetzal Drive
Solway MN 56678



website: www.AffinityRealEstate.com | email: info@affinityrealestate.com | office: 218-237-3333 | fax: 218-237-3377

Affinity
REAL ESTATE INC

\$389,800
MLS 6622477 Lake Home
9741 Quetzal Drive
Solway MN 56678



website: www.AffinityRealEstate.com | email: info@affinityrealestate.com | office: 218-237-3333 | fax:218-237-3377



\$389,800
MLS 6622477 Lake Home
9741 Quetzal Drive
Solway MN 56678



website: www.AffinityRealEstate.com | email: info@affinityrealestate.com | office: 218-237-3333 | fax: 218-237-3377

Affinity
REAL ESTATE INC

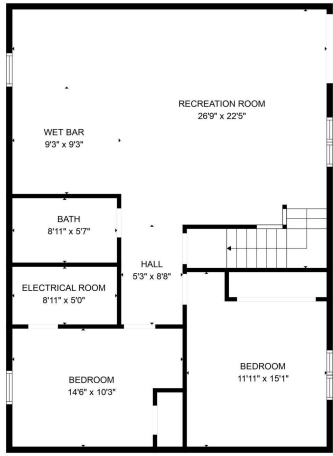
\$389,800
MLS 6622477 Lake Home
9741 Quetzal Drive
Solway MN 56678



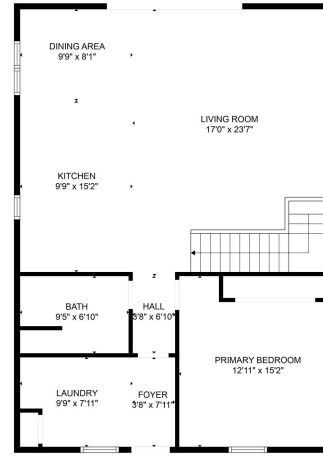
website: www.AffinityRealEstate.com | email: info@affinityrealestate.com | office: 218-237-3333 | fax:218-237-3377

Affinity
REAL ESTATE INC

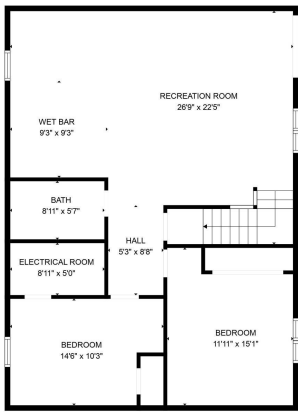
\$389,800
MLS 6622477 Lake Home
9741 Quetzal Drive
Solway MN 56678



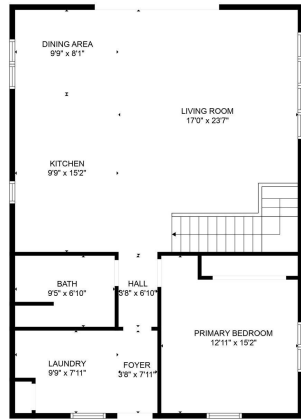
FLOOR PLAN CREATED BY CUBICASA APP. MEASUREMENTS DEEMED HIGHLY RELIABLE BUT NOT GUARANTEED.



FLOOR PLAN CREATED BY CUBICASA APP. MEASUREMENTS DEEMED HIGHLY RELIABLE BUT NOT GUARANTEED.



FLOOR 1



FLOOR 2

FLOOR PLAN CREATED BY CUBICASA APP. MEASUREMENTS DEEMED HIGHLY RELIABLE BUT NOT GUARANTEED.

website: www.AffinityRealEstate.com | email: info@affinityrealestate.com | office: 218-237-3333 | fax:218-237-3377



\$389,800
 MLS 6622477 Lake Home
 9741 Quetzal Drive
 Solway MN 56678