



MLS 6622603 Lake Land

\$130,000



Description:

Discover the ultimate lakeside paradise on Big LaSalle Lake with this stunning 5.93-acre lot! Boasting elevation for incredible panoramic views, this property is the perfect canvas to build your dream home or a cozy getaway cabin. With breathtaking, crystal-clear water and sandy frontage, you'll enjoy everything this peaceful and picturesque lake has to offer.

Whether you're looking for a year-round home or a weekend retreat, this beautiful property offers endless possibilities. Don't miss your chance to own a piece of lakeside heaven! Listing # 6622477 has to sell first. Buyer of home gets first option on lot.

Additional Details:

| | |
|------------------------|-------------------|
| Lot Acres | 5.93 |
| Lot Dimensions | 150x1318x153x1118 |
| School District | 31 |
| Taxes | \$294 |
| Taxes with Assessments | \$294 |
| Tax Year | 2024 |

Additional Features:

Driving Directions:

From Becida go south on Cty 3. Turn right on 430th St. Follow to 105th Ave and turn right. Go to Quetzal dr on the right. Take left on Quetzal dr. Follow to end of road property is on the right.



Listed By:
218 Real Estate

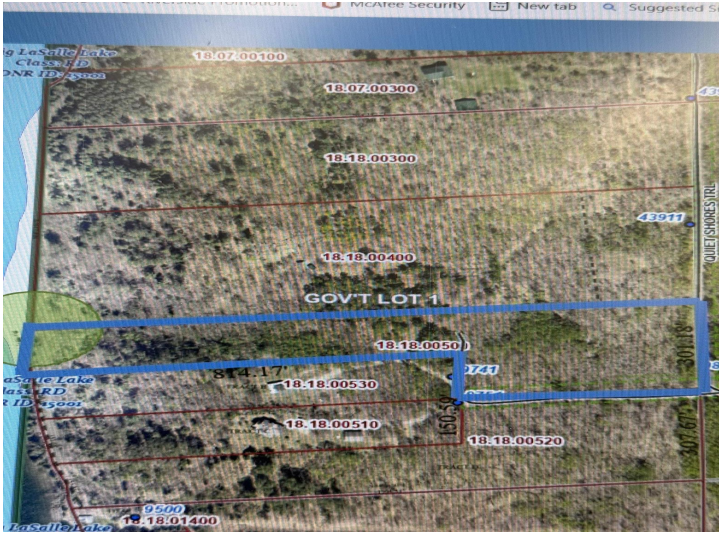
Affinity Real Estate Inc. participates in the Regional Multiple Listing Service of Minnesota, Inc Broker Reciprocity (sm) program, allowing us to display other broker's listings on our website. All properties are subject to prior sale, change or withdrawal.



Call Affinity Real Estate
218-237-3333
info@affinityrealestate.com



Affinity Real Estate - 600 Park Avenue South - Park Rapids MN 56470



website: www.AffinityRealEstate.com | email: info@affinityrealestate.com | office: 218-237-3333 | fax:218-237-3377



\$130,000
MLS 6622603 Lake Land
TBD Quetzal Drive
Solway MN 56678