



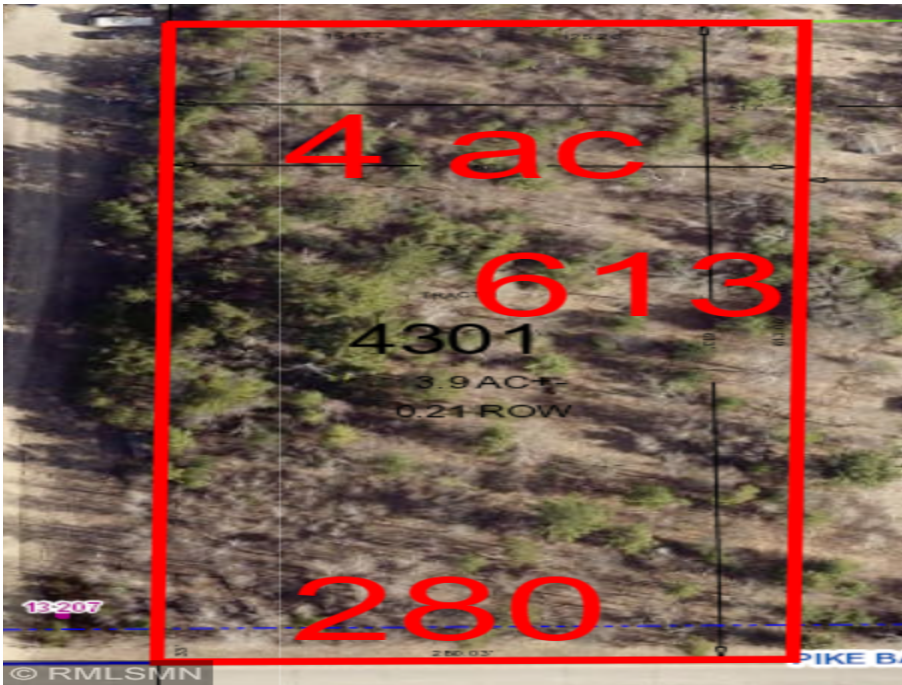
MLS 6622817 Land

**\$39,900**

4 Acres  
Raw Land

TBD Pike Bay Loop  
Cass Lake MN 56633

Status: Active



**Description:**

4 beautifully wooded acres, laden with huge white and red pine plus mature hardwoods. There are neighbors on either side, however the property is more than spacious enough to provide complete privacy among its majestic trees and foliage. The home adjacent to the east has been purchased with a extensive inside & exterior remodel planned. Very important is this property location: just ¼ mile east begins endless Chippewa National Forest lands with abundant trails: auto, biking, 4 wheeling, snowmobiling, and fabulous hunting and fishing. Just 2 mi east is a beautiful National Forest Campground with a gorgeous public boat landing on Pike Bay of the Cass Lake Chain. Perfect sand beaches along this shoreline provide swimming, picnicking, restroom and very easy boat access. Additionally, just 3 mi away there is a very nice large public access to Cass Lake off Hwy 2 on the east side of the town of Cass Lake. Easy boating to Cass, Andrusia, Big Wolf & Kitchi, plus do a Mississippi adventure to many other lakes. Groceries, gas, hardware, liquor, golf, summer dining at historic Stony Point Resort and year around dining at the newly built "Bobbers" restaurant within the Cass Lake Lodge Resort, gambling and entertainment at new Cedar Lakes Casino, all just 2 mi north at the town Cass Lake.

**Additional Details:**

Lot Acres	4
Lot Dimensions	280x613x280x613
School District	115
Taxes	(unreported)
Taxes with Assessments	(unreported)
Tax Year	2024

**Additional Features:**

**Driving Directions:**

From Walker go N on Hwy 371 for 17 miles, turn right on Pike Bay Loop, follow 1/4 mi to property on left, 1st for sale sign on properties, no driveway. From Cass Lake go S on Hwy 371 approx 2 mi, turn left Pike Bay Loop, follow 1/4 mi to property on left, 1st for sale sign on properties, no driveway



Listed By:  
askRICK.com dba Walker Area Realty

Affinity Real Estate Inc. participates in the Regional Multiple Listing Service of Minnesota, Inc Broker Reciprocity (sm) program, allowing us to display other broker's listings on our website. All properties are subject to prior sale, change or withdrawal.



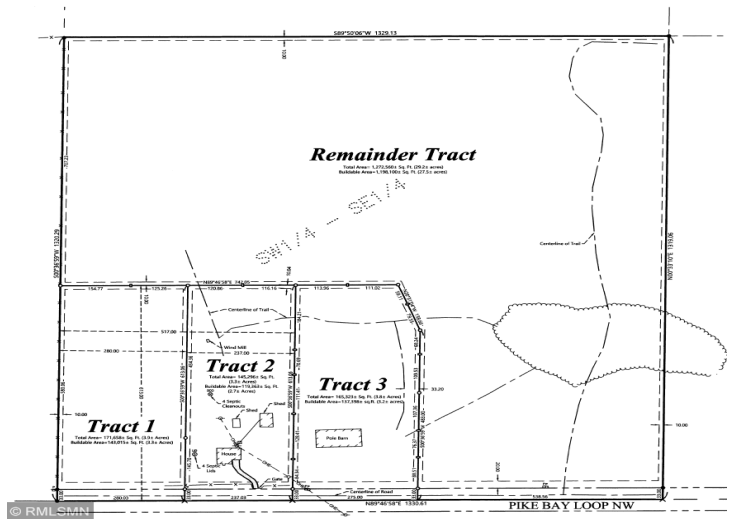
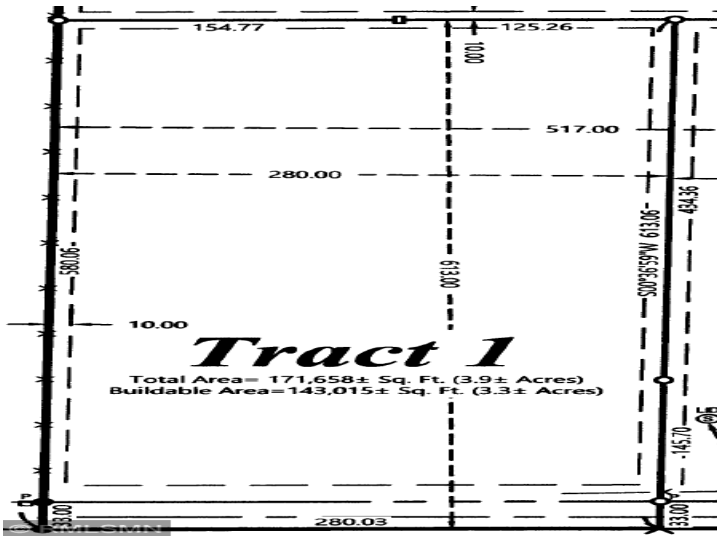
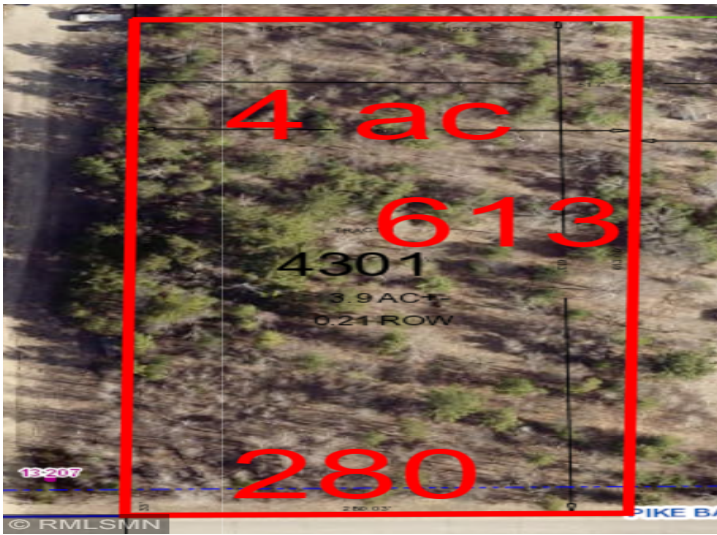
**Call Affinity Real Estate**

**218-237-3333**

**info@affinityrealestate.com**



**Affinity Real Estate - 600 Park Avenue South - Park Rapids MN 56470**



website: [www.AffinityRealEstate.com](http://www.AffinityRealEstate.com) | email: [info@affinityrealestate.com](mailto:info@affinityrealestate.com) | office: 218-237-3333 | fax:218-237-3377



**\$39,900**  
 MLS 6622817 Land  
 TBD Pike Bay Loop  
 Cass Lake MN 56633