



MLS 6622955 Lake Home

**\$235,000**

1,509 sq ft  
3 bedrooms  
1 baths

22292 County 7  
Park Rapids MN 56470

Waterfront: Little Sand

Status: Active

**Description:**

This is the one!

Year-round country living with access to Little Sand Lake, just up the road from Zorbas and right on the ATV/snowmobile trails! Enjoy all four seasons of northern Minnesota living.

Summer means lake time that you can enjoy from the sand beach and private dock while the lawn care is taken care of for you. Spend the summer exploring all three connected lakes - Little Sand, Big Sand and Lake Ida.

Fall is an amazing time when the cabins shut down and you have the place all to yourself.

The driveway down to the lake makes a great sledding hill in the winter. Go right from the garage to the Paul Bunyan Forest and stop at Zorbas for pizza on your way home.

Wait for the loons to return in the spring and you'll know you picked the right place.

Make your appointment to see this property right away!

**Additional Details:**

Year Built	1940
Lot Acres	0.19
Lot Dimensions	irg
Garage Stalls	2
School District	309
Taxes	\$2,338
Taxes with Assessments	\$2,548
Tax Year	2024

**Additional Features:**

Partially Finished, Walkout Fuel: Propane Garage: Heat: Radiant Air Sewer: Shared Septic Water: Submersible - 4 Inch  
 Listed By: Dane Arthur Real Estate Agency-Park Rapids

**Driving Real Estate** Inc. participates in the Regional Multiple Listing Service of Minnesota, Inc. Broker Reciprocity (sm) program, allowing us to display other broker's listings on our website. All properties are subject to prior sale, change or withdrawal.



Call Affinity Real Estate

**218-237-3333**

[info@affinityrealestate.com](mailto:info@affinityrealestate.com)

MLS REALTOR REAL ESTATE PROPERTY Zorbas. Property on the

Affinity Real Estate - 600 Park Avenue South - Park Rapids MN 56470





website: [www.AffinityRealEstate.com](http://www.AffinityRealEstate.com) | email: [info@affinityrealestate.com](mailto:info@affinityrealestate.com) | office: 218-237-3333 | fax:218-237-3377



**\$235,000**  
MLS 6622955 Lake Home  
22292 County 7  
Park Rapids MN 56470





website: [www.AffinityRealEstate.com](http://www.AffinityRealEstate.com) | email: [info@affinityrealestate.com](mailto:info@affinityrealestate.com) | office: 218-237-3333 | fax: 218-237-3377

**Affinity**  
REAL ESTATE INC

**\$235,000**  
MLS 6622955 Lake Home  
22292 County 7  
Park Rapids MN 56470



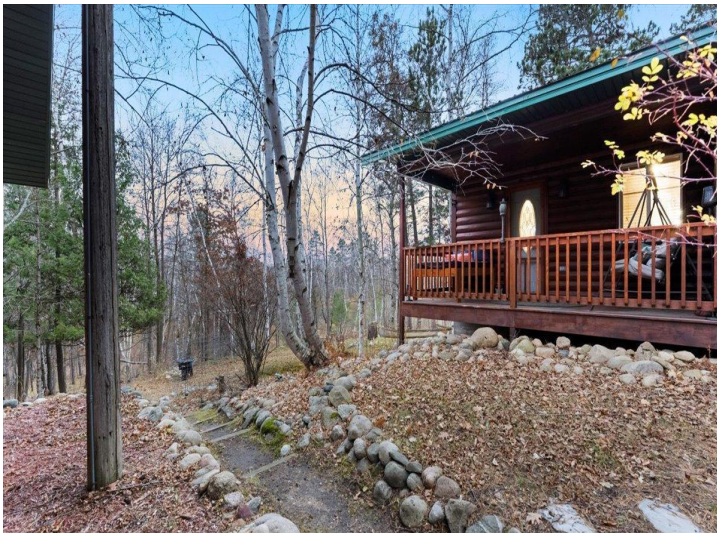


website: [www.AffinityRealEstate.com](http://www.AffinityRealEstate.com) | email: [info@affinityrealestate.com](mailto:info@affinityrealestate.com) | office: 218-237-3333 | fax:218-237-3377

**Affinity**  
REAL ESTATE INC

**\$235,000**  
MLS 6622955 Lake Home  
22292 County 7  
Park Rapids MN 56470



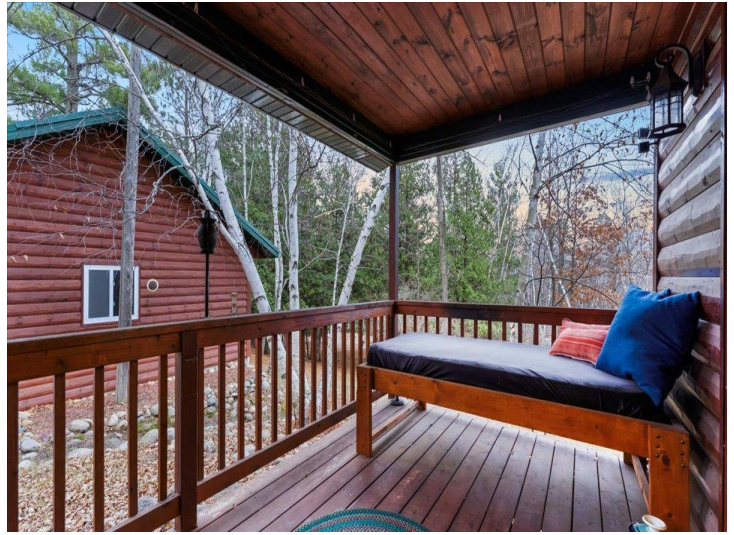


website: [www.AffinityRealEstate.com](http://www.AffinityRealEstate.com) | email: [info@affinityrealestate.com](mailto:info@affinityrealestate.com) | office: 218-237-3333 | fax:218-237-3377

**Affinity**  
REAL ESTATE INC

**\$235,000**  
MLS 6622955 Lake Home  
22292 County 7  
Park Rapids MN 56470



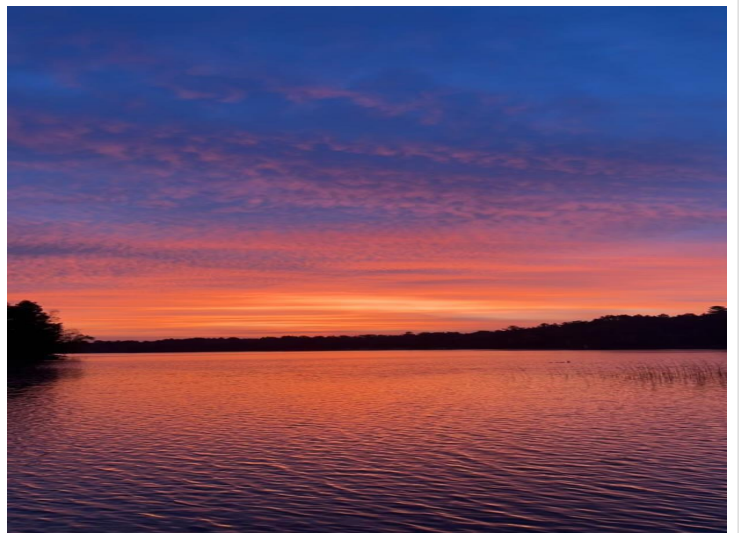
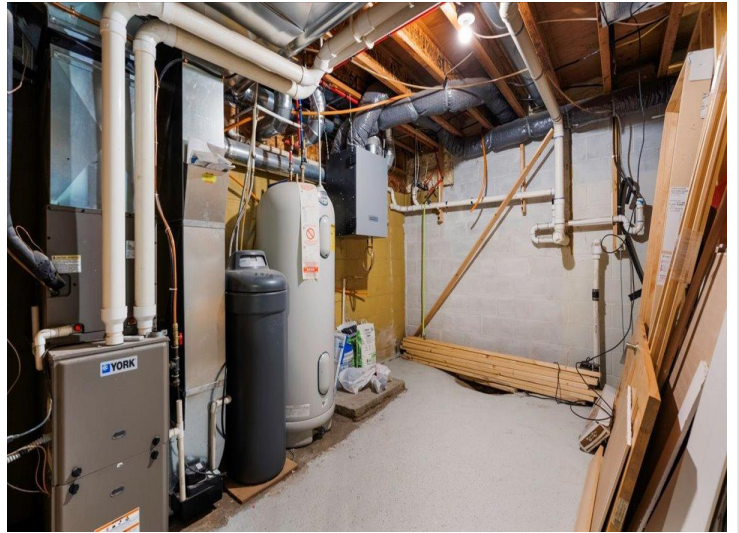
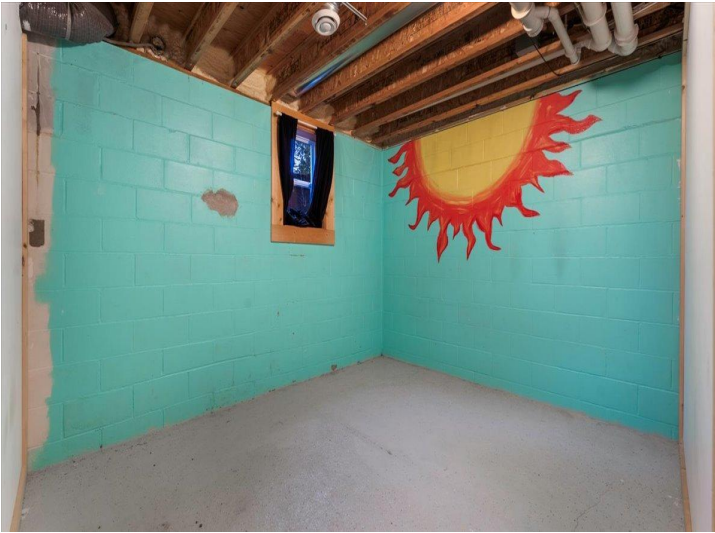


website: [www.AffinityRealEstate.com](http://www.AffinityRealEstate.com) | email: [info@affinityrealestate.com](mailto:info@affinityrealestate.com) | office: 218-237-3333 | fax: 218-237-3377

**Affinity**  
REAL ESTATE INC

**\$235,000**  
MLS 6622955 Lake Home  
22292 County 7  
Park Rapids MN 56470





website: [www.AffinityRealEstate.com](http://www.AffinityRealEstate.com) | email: [info@affinityrealestate.com](mailto:info@affinityrealestate.com) | office: 218-237-3333 | fax: 218-237-3377

**Affinity**  
REAL ESTATE INC

**\$235,000**  
MLS 6622955 Lake Home  
22292 County 7  
Park Rapids MN 56470





website: [www.AffinityRealEstate.com](http://www.AffinityRealEstate.com) | email: [info@affinityrealestate.com](mailto:info@affinityrealestate.com) | office: 218-237-3333 | fax:218-237-3377



**\$235,000**  
MLS 6622955 Lake Home  
22292 County 7  
Park Rapids MN 56470





website: [www.AffinityRealEstate.com](http://www.AffinityRealEstate.com) | email: [info@affinityrealestate.com](mailto:info@affinityrealestate.com) | office: 218-237-3333 | fax:218-237-3377

**Affinity**  
REAL ESTATE INC

**\$235,000**  
MLS 6622955 Lake Home  
22292 County 7  
Park Rapids MN 56470