



MLS 6622981 Lake Land

\$429,900

Description:

Own this lot on highly sot after lake, where the fishing is great and water clarity is second to none. Lot has 225 feet of sand/rocky hard bottom shoreline, Elevation is gradual to the lake with a great mix of pines and hardwoods. Owner has build a new access road into property and has cleared a site for your future home. Fish from your own dock which is included in the sale. Don't miss out on your chance to own this piece of up north awesomeness. The beautiful aquamarine waters of East Crooked Lake.

Additional Details:

Lot Acres	1.84
Lot Dimensions	225x450x235x304
School District	308
Taxes	\$260
Taxes with Assessments	\$260
Tax Year	2024

Additional Features:

Driving Directions:

From 71/34 intersection to East on 34 to Nevis. Left on Highway 2. Go through Nevis. Go about 5 miles to a right on Heritage Rd to a right on Hazelnut Drive to a left on Hazelnut Trail. Follow to the end of Hazelnut Trail.



Listed By:
Wolff & Simon Real Estate

Affinity Real Estate Inc. participates in the Regional Multiple Listing Service of Minnesota, Inc Broker Reciprocity (sm) program, allowing us to display other broker's listings on our website. All properties are subject to prior sale, change or withdrawal.



Call Affinity Real Estate

218-237-3333

info@affinityrealestate.com



Affinity Real Estate - 600 Park Avenue South - Park Rapids MN 56470



website: www.AffinityRealEstate.com | email: info@affinityrealestate.com | office: 218-237-3333 | fax:218-237-3377



\$429,900
MLS 6622981 Lake Land
TBD Hazelnut Trail
Nevis MN 56467



website: www.AffinityRealEstate.com | email: info@affinityrealestate.com | office: 218-237-3333 | fax:218-237-3377



\$429,900
MLS 6622981 Lake Land
TBD Hazelnut Trail
Nevis MN 56467



website: www.AffinityRealEstate.com | email: info@affinityrealestate.com | office: 218-237-3333 | fax:218-237-3377



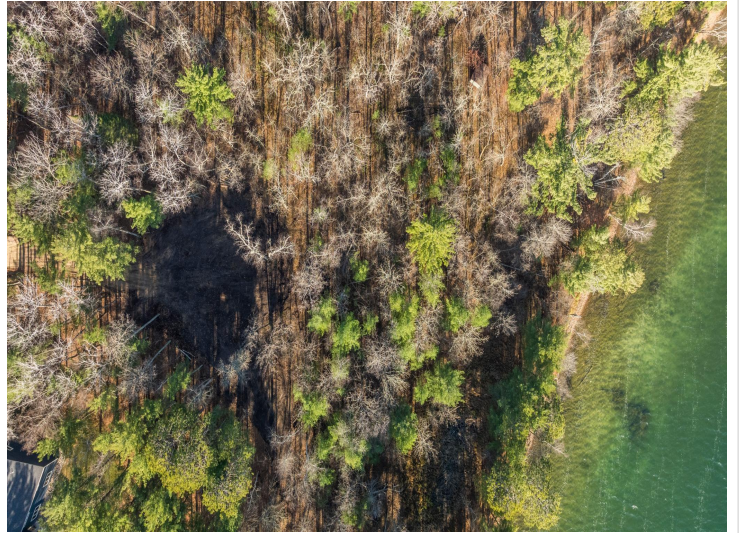
\$429,900
MLS 6622981 Lake Land
TBD Hazelnut Trail
Nevis MN 56467



website: www.AffinityRealEstate.com | email: info@affinityrealestate.com | office: 218-237-3333 | fax:218-237-3377



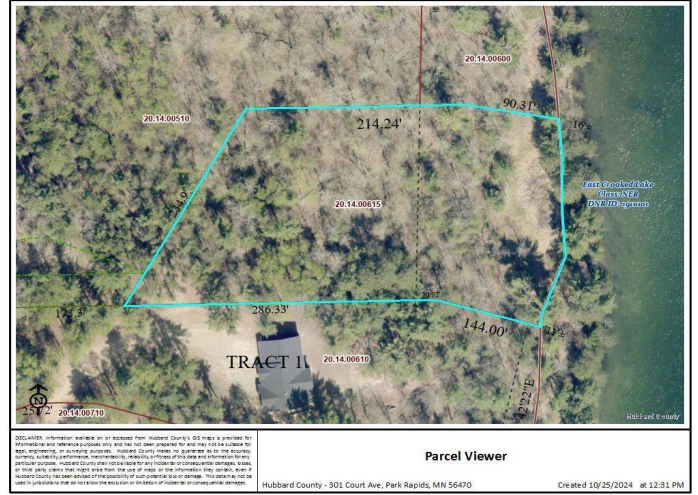
\$429,900
MLS 6622981 Lake Land
TBD Hazelnut Trail
Nevis MN 56467



website: www.AffinityRealEstate.com | email: info@affinityrealestate.com | office: 218-237-3333 | fax:218-237-3377



\$429,900
MLS 6622981 Lake Land
TBD Hazelnut Trail
Nevis MN 56467



website: www.AffinityRealEstate.com | email: info@affinityrealestate.com | office: 218-237-3333 | fax:218-237-3377



\$429,900
 MLS 6622981 Lake Land
 TBD Hazelnut Trail
 Nevis MN 56467