



MLS 6624068 Land

\$54,900

2.5 Acres
Raw Land

xxxxx Plentywood Rd
Perham MN 56573

Status: Active

Description:

Great Location between Perham, Ottertail, and New York Mills. Beautiful woods with mature Oak, and Hackberry. Level and sloped building sites. Could make a good walkout if wanted or a slab on grade homesite? With minimal tree trimming you will have a lake view from the homesite. This is an Outstanding building site in a perfect location.

Additional Details:

Lot Acres	2.5
Lot Dimensions	2.5 acres
School District	549
Taxes	(unreported)
Taxes with Assessments	(unreported)
Tax Year	2024

Additional Features:

Driving Directions:

Hwy 78 between Perham and Ottertail, Co Rd 14 East to 453rd to Plentywood Rd. Follow to culdesac.



Listed By:
New Horizons Realty Of Perham

Affinity Real Estate Inc. participates in the Regional Multiple Listing Service of Minnesota, Inc Broker Reciprocity (sm) program, allowing us to display other broker's listings on our website. All properties are subject to prior sale, change or withdrawal.



Call Affinity Real Estate

218-237-3333

info@affinityrealestate.com



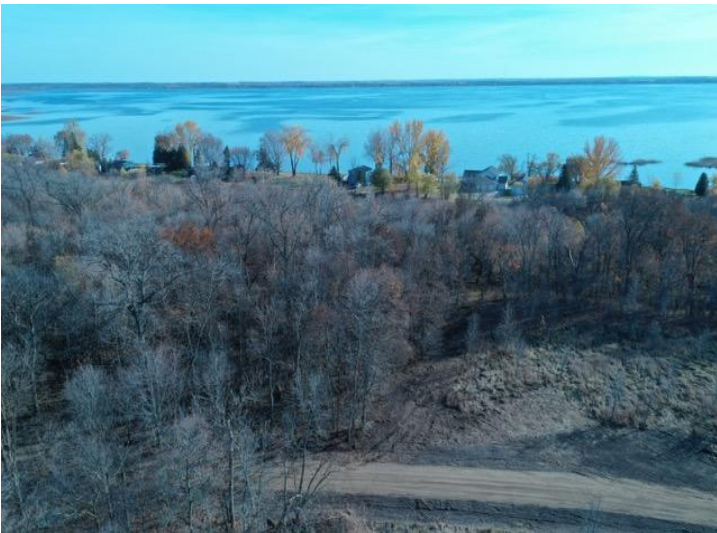
Affinity Real Estate - 600 Park Avenue South - Park Rapids MN 56470



website: www.AffinityRealEstate.com | email: info@affinityrealestate.com | office: 218-237-3333 | fax:218-237-3377



\$54,900
MLS 6624068 Land
xxxxx Plentywood Rd
Perham MN 56573



website: www.AffinityRealEstate.com | email: info@affinityrealestate.com | office: 218-237-3333 | fax:218-237-3377



\$54,900
MLS 6624068 Land
xxxxx Plentywood Rd
Perham MN 56573