



MLS 6624375 Lake Home

**\$2,875,000**

5,424 sq ft  
7 bedrooms  
6 baths

46376 Jungle Shore Trail  
Perham MN 56573

Waterfront: Big Pine

Status: Active

**Description:**

Welcome to the Big Pine Lake. This rare and gem offers the perfect blend of luxury and versatility, making it a dream home for those seeking a waterfront retreat with multi-generational living options. This exquisite property boasts a level shoreline with 200' of sandy beach. Imagine waking up to the soothing sounds of lapping waves and sun-kissed afternoons on your own private beach. Step inside this custom-designed home and prepare to be impressed by the stunning craftsmanship, cathedral ceilings and thoughtful details throughout. The main residence features 5BR's, 3BA and a gourmet kitchen that would delight any culinary connoisseur, featuring high end appliances, custom cabinetry and walk in pantry. The spacious living areas offer panoramic views of the lake and open concept design. But the true magic of this property lies in its potential for multi-family living with its separate entrance and living quarters, creating a private 2 BR 3BA retreat for extended family, guests or rental income. A nice bonus with the New security system installed that offers preferred insurance rates. This property is truly a rare find!

**Additional Details:**


Year Built	2016
Lot Acres	1.99
Lot Dimensions	198x376x194x388
Garage Stalls	3
School District	549
Taxes	\$9,484
Taxes with Assessments	\$9,484
Tax Year	2024

**Additional Features:**

**Basement:** None **Fuel:** Natural Gas **Garage:** 3 **Heat:** Forced Air, Fireplace(s), Radiant Floor **Sewer:** Private Sewer **Water:** Well **Air Conditioning:** Central Air

**Driving Directions:**

From Hwy 10 E, go R on Co Rd 80, R on Co Rd 8, R on Jungle Shores Trl to 46376



Listed By:  
Lakes Area Realty, Inc.

Affinity Real Estate Inc. participates in the Regional Multiple Listing Service of Minnesota, Inc Broker Reciprocity (sm) program, allowing us to display other broker's listings on our website. All properties are subject to prior sale, change or withdrawal.



**Call Affinity Real Estate**  
**218-237-3333**  
**info@affinityrealestate.com**

Affinity Real Estate - 600 Park Avenue South - Park Rapids MN 56470



website: [www.AffinityRealEstate.com](http://www.AffinityRealEstate.com) | email: [info@affinityrealestate.com](mailto:info@affinityrealestate.com) | office: 218-237-3333 | fax:218-237-3377



**\$2,875,000**  
MLS 6624375 Lake Home  
46376 Jungle Shore Trail  
Perham MN 56573



website: [www.AffinityRealEstate.com](http://www.AffinityRealEstate.com) | email: [info@affinityrealestate.com](mailto:info@affinityrealestate.com) | office: 218-237-3333 | fax: 218-237-3377

**Affinity**  
REAL ESTATE INC

**\$2,875,000**  
MLS 6624375 Lake Home  
46376 Jungle Shore Trail  
Perham MN 56573



website: [www.AffinityRealEstate.com](http://www.AffinityRealEstate.com) | email: [info@affinityrealestate.com](mailto:info@affinityrealestate.com) | office: 218-237-3333 | fax: 218-237-3377

**Affinity**  
REAL ESTATE INC

**\$2,875,000**  
MLS 6624375 Lake Home  
46376 Jungle Shore Trail  
Perham MN 56573



website: [www.AffinityRealEstate.com](http://www.AffinityRealEstate.com) | email: [info@affinityrealestate.com](mailto:info@affinityrealestate.com) | office: 218-237-3333 | fax: 218-237-3377

**Affinity**  
REAL ESTATE INC

**\$2,875,000**  
MLS 6624375 Lake Home  
46376 Jungle Shore Trail  
Perham MN 56573



website: [www.AffinityRealEstate.com](http://www.AffinityRealEstate.com) | email: [info@affinityrealestate.com](mailto:info@affinityrealestate.com) | office: 218-237-3333 | fax: 218-237-3377

**Affinity**  
REAL ESTATE INC

**\$2,875,000**  
MLS 6624375 Lake Home  
46376 Jungle Shore Trail  
Perham MN 56573



website: [www.AffinityRealEstate.com](http://www.AffinityRealEstate.com) | email: [info@affinityrealestate.com](mailto:info@affinityrealestate.com) | office: 218-237-3333 | fax: 218-237-3377

**Affinity**  
REAL ESTATE INC

**\$2,875,000**  
MLS 6624375 Lake Home  
46376 Jungle Shore Trail  
Perham MN 56573



website: [www.AffinityRealEstate.com](http://www.AffinityRealEstate.com) | email: [info@affinityrealestate.com](mailto:info@affinityrealestate.com) | office: 218-237-3333 | fax:218-237-3377



**\$2,875,000**  
MLS 6624375 Lake Home  
46376 Jungle Shore Trail  
Perham MN 56573





website: [www.AffinityRealEstate.com](http://www.AffinityRealEstate.com) | email: [info@affinityrealestate.com](mailto:info@affinityrealestate.com) | office: 218-237-3333 | fax: 218-237-3377

**Affinity**  
REAL ESTATE INC

**\$2,875,000**  
MLS 6624375 Lake Home  
46376 Jungle Shore Trail  
Perham MN 56573



website: [www.AffinityRealEstate.com](http://www.AffinityRealEstate.com) | email: [info@affinityrealestate.com](mailto:info@affinityrealestate.com) | office: 218-237-3333 | fax: 218-237-3377

**Affinity**  
REAL ESTATE INC

**\$2,875,000**  
MLS 6624375 Lake Home  
46376 Jungle Shore Trail  
Perham MN 56573



website: [www.AffinityRealEstate.com](http://www.AffinityRealEstate.com) | email: [info@affinityrealestate.com](mailto:info@affinityrealestate.com) | office: 218-237-3333 | fax: 218-237-3377

**Affinity**  
REAL ESTATE INC

**\$2,875,000**  
MLS 6624375 Lake Home  
46376 Jungle Shore Trail  
Perham MN 56573



website: [www.AffinityRealEstate.com](http://www.AffinityRealEstate.com) | email: [info@affinityrealestate.com](mailto:info@affinityrealestate.com) | office: 218-237-3333 | fax:218-237-3377

**Affinity**  
REAL ESTATE INC

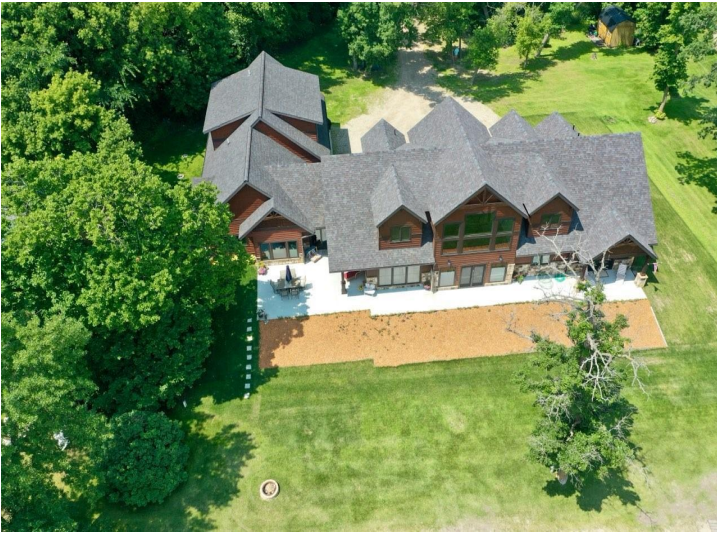
**\$2,875,000**  
MLS 6624375 Lake Home  
46376 Jungle Shore Trail  
Perham MN 56573



website: [www.AffinityRealEstate.com](http://www.AffinityRealEstate.com) | email: [info@affinityrealestate.com](mailto:info@affinityrealestate.com) | office: 218-237-3333 | fax:218-237-3377

**Affinity**  
REAL ESTATE INC

**\$2,875,000**  
MLS 6624375 Lake Home  
46376 Jungle Shore Trail  
Perham MN 56573



website: [www.AffinityRealEstate.com](http://www.AffinityRealEstate.com) | email: [info@affinityrealestate.com](mailto:info@affinityrealestate.com) | office: 218-237-3333 | fax:218-237-3377



**\$2,875,000**  
MLS 6624375 Lake Home  
46376 Jungle Shore Trail  
Perham MN 56573



website: [www.AffinityRealEstate.com](http://www.AffinityRealEstate.com) | email: [info@affinityrealestate.com](mailto:info@affinityrealestate.com) | office: 218-237-3333 | fax: 218-237-3377

**Affinity**  
REAL ESTATE INC

**\$2,875,000**  
MLS 6624375 Lake Home  
46376 Jungle Shore Trail  
Perham MN 56573