



MLS 6624392 Lake Land

\$125,000



Description:

Serene, private, peaceful. 2.2 ac on a private wildlife pond. The view is incredible. Nicely wooded, including numerous old growth red and white pines. Parklike, this is a setting you have to see to appreciate. Plus, your own 290ft of frontage on Long Lake just across the road. Located only 2 mi to downtown Walker. Also, sets a stone's throw from public lands the Heartland Trail. The strip fronting on Long Lake is narrow and does have a steep embankment that would require a stairway, however you do own 290ft of private frontage. The building site overlooking the pond is simply breathtaking. Very rare piece of property. Additional adjacent West Tract (2.8 ac, 417' frontage) is available \$125k.


Additional Details:

Lot Acres	2.2
Lot Dimensions	290x590x100x535
School District	113
Taxes	(unreported)
Taxes with Assessments	(unreported)
Tax Year	2024

Additional Features:

Driving Directions:

1 block north of downtown Walker on Hwy 371, turn left on County Road 12 (Jimmy's Restaurant) follow approx 1.2 miles, turn on Sixth Lake Rd, follow approx .8 miles to property on both sides of Sixth Lake Rd, signs on properties.

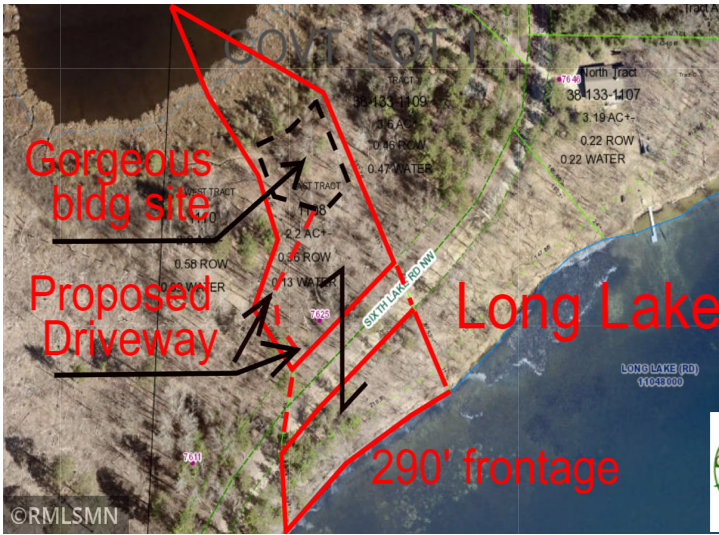
 Listed By:
askRICK.com dba Walker Area Realty

Affinity Real Estate Inc. participates in the Regional Multiple Listing Service of Minnesota, Inc Broker Reciprocity (sm) program, allowing us to display other broker's listings on our website. All properties are subject to prior sale, change or withdrawal.

 Call Affinity Real Estate
218-237-3333
info@affinityrealestate.com

Affinity Real Estate - 600 Park Avenue South - Park Rapids MN 56470



website: www.AffinityRealEstate.com | email: info@affinityrealestate.com | office: 218-237-3333 | fax: 218-237-3377



\$125,000
 MLS 6624392 Lake Land
 7625 Sixth Lake Road
 Akeley MN 56484



website: www.AffinityRealEstate.com | email: info@affinityrealestate.com | office: 218-237-3333 | fax:218-237-3377



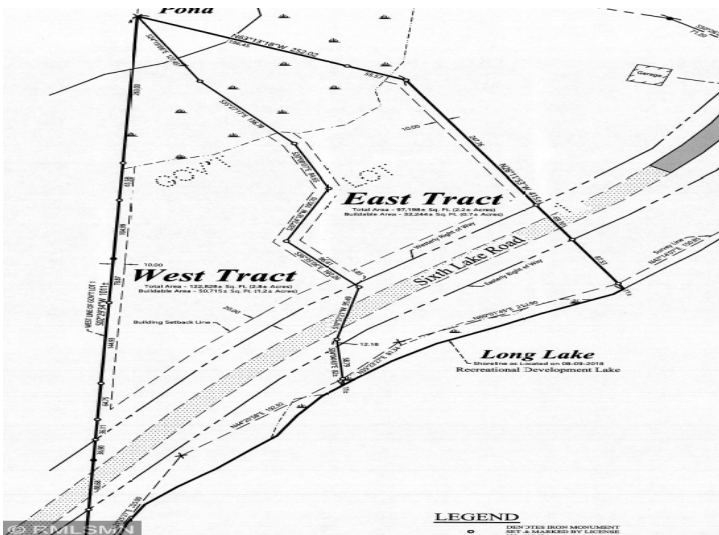
\$125,000
MLS 6624392 Lake Land
7625 Sixth Lake Road
Akeley MN 56484



website: www.AffinityRealEstate.com | email: info@affinityrealestate.com | office: 218-237-3333 | fax:218-237-3377



\$125,000
MLS 6624392 Lake Land
7625 Sixth Lake Road
Akeley MN 56484



website: www.AffinityRealEstate.com | email: info@affinityrealestate.com | office: 218-237-3333 | fax: 218-237-3377



\$125,000
 MLS 6624392 Lake Land
 7625 Sixth Lake Road
 Akeley MN 56484