

MLS 6625477 Lake Land

\$70,000

Description:

Probate property, sold 'As Is'.


Additional Details:

Lot Acres	0.67
Lot Dimensions	104x311x101x269
School District	2174
Taxes	\$240
Taxes with Assessments	\$240
Tax Year	2023

Additional Features:

Driving Directions:

From 371 turn on 20th street SW to 29th (easement with neighboring property to access the land)



Listed By:
LPT Realty, LLC

Affinity Real Estate Inc. participates in the Regional Multiple Listing Service of Minnesota, Inc Broker Reciprocity (sm) program, allowing us to display other broker's listings on our website. All properties are subject to prior sale, change or withdrawal.



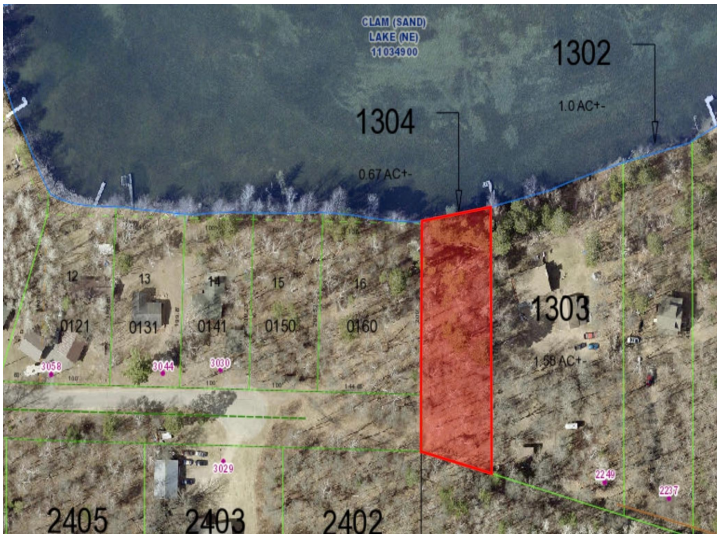
Call Affinity Real Estate

218-237-3333

info@affinityrealestate.com



Affinity Real Estate - 600 Park Avenue South - Park Rapids MN 56470



website: www.AffinityRealEstate.com | email: info@affinityrealestate.com | office: 218-237-3333 | fax: 218-237-3377



\$70,000
MLS 6625477 Lake Land
XXX Unnamed Street
Backus MN 56435