



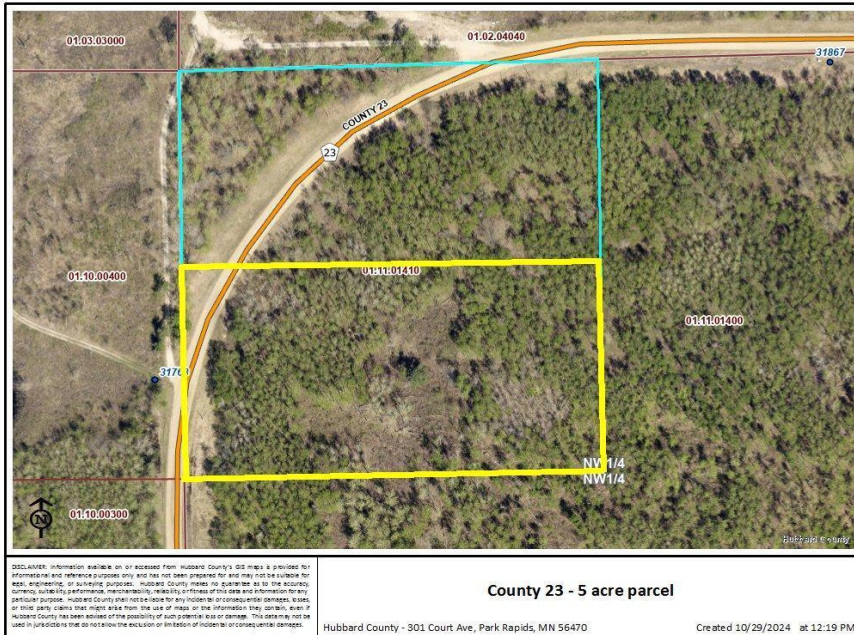
MLS 6625555 Land

\$45,000

5 Acres
Raw Land

TBD County 23
Akeley MN 56433

Status: Pending



Description:

This wooded 5 acre parcel is located on the south border of the Paul Bunyan State Forest. Easy access to thousands of acres of State Forest land including the Martineau AVT/OHM trails. Mostly level elevation with all high ground. Great spot to build or camp, easy access off County Road just a few miles from Akeley.

Additional Details:

Lot Acres	5
Lot Dimensions	330x660
School District	113
Taxes	\$270
Taxes with Assessments	\$270
Tax Year	2024

Additional Features:

Driving Directions:

From Akeley, go north on State 64 to right on County 23. Follow for 2 miles to property on right.



Listed By:
Edina Realty, Inc.

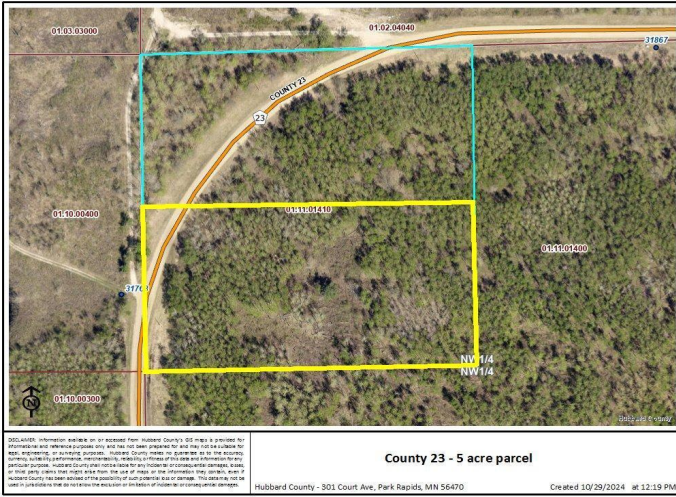
Affinity Real Estate Inc. participates in the Regional Multiple Listing Service of Minnesota, Inc Broker Reciprocity (sm) program, allowing us to display other broker's listings on our website. All properties are subject to prior sale, change or withdrawal.



Call Affinity Real Estate
218-237-3333
info@affinityrealestate.com



Affinity Real Estate - 600 Park Avenue South - Park Rapids MN 56470



website: www.AffinityRealEstate.com | email: info@affinityrealestate.com | office: 218-237-3333 | fax: 218-237-3377



\$45,000
 MLS 6625555 Land
 TBD County 23
 Akeley MN 56433