



MLS 6625819 Lake Home

\$699,900

3,624 sq ft
3 bedrooms
4 baths

23258 County 7
Park Rapids MN 56470

Waterfront: Little Sand

Status: Pending

Description:

Beautiful 3 bedroom, 4 bath home with 200 Ft of Shoreline on Little Sand Lake. Nestled among the pines on 1.5 acres for utmost privacy, this stunning home boasts 3,482 sq. ft. of finished living space, featuring a floor-to-ceiling wood-burning fireplace. The main floor includes a remodeled kitchen, dining room, sunroom, 2 bedrooms, and 2 baths, including a primary bedroom suite. Convenience is key with main-floor laundry and direct access to the attached garage. Upstairs, a spacious loft with its own bathroom offers a versatile space, while the walk-out lower level provides an additional bedroom and bathroom, family room, storage/utility area, and a dedicated wood storage area. Outside, the park-like setting is enhanced with numerous upgrades. Enjoy peace of mind with a new roof installed in 2023, freshly re-stained house and deck in 2024, and a new concrete sidewalk, front stairs, and garage apron. The property also benefits from new landscaping, including riprap and a rock retaining wall at the water's edge. Additional highlights include a 24x32 detached garage for extra storage, over 100 acres of public land just across the road, boat to Zorbaz's on the south end of the lake and the Paul Bunyan State Forest is a short drive away.

Additional Details:


Year Built	1986
Lot Acres	1.5
Lot Dimensions	200x620
Garage Stalls	2
School District	309
Taxes	\$4,334
Taxes with Assessments	\$4,544
Tax Year	2024

Additional Features:

Basement: 8 ft+ Pour, Full, Partially Finished, Storage Space, Walkout **Fuel:** Electric, Propane, Wood **Garage:** 2 **Heat:** Baseboard, Forced Air, Fireplace(s) **Sewer:** Tank with Drainage Field **Water:** Drilled, Well **Air Conditioning:** Central Air

Driving Directions:

From the intersection of State 34 and County 7, go north on County 7 past Dorset to property on right.



Listed By:
Edina Realty, Inc.

Affinity Real Estate Inc. participates in the Regional Multiple Listing Service of Minnesota, Inc Broker Reciprocity (sm) program, allowing us to display other broker's listings on our website. All properties are subject to prior sale, change or withdrawal.



Call Affinity Real Estate
218-237-3333
info@affinityrealestate.com



Affinity Real Estate - 600 Park Avenue South - Park Rapids MN 56470



website: www.AffinityRealEstate.com | email: info@affinityrealestate.com | office: 218-237-3333 | fax:218-237-3377



\$699,900
MLS 6625819 Lake Home
23258 County 7
Park Rapids MN 56470



website: www.AffinityRealEstate.com | email: info@affinityrealestate.com | office: 218-237-3333 | fax:218-237-3377



\$699,900
MLS 6625819 Lake Home
23258 County 7
Park Rapids MN 56470



website: www.AffinityRealEstate.com | email: info@affinityrealestate.com | office: 218-237-3333 | fax:218-237-3377

Affinity
REAL ESTATE INC

\$699,900
MLS 6625819 Lake Home
23258 County 7
Park Rapids MN 56470



website: www.AffinityRealEstate.com | email: info@affinityrealestate.com | office: 218-237-3333 | fax:218-237-3377

Affinity
REAL ESTATE INC

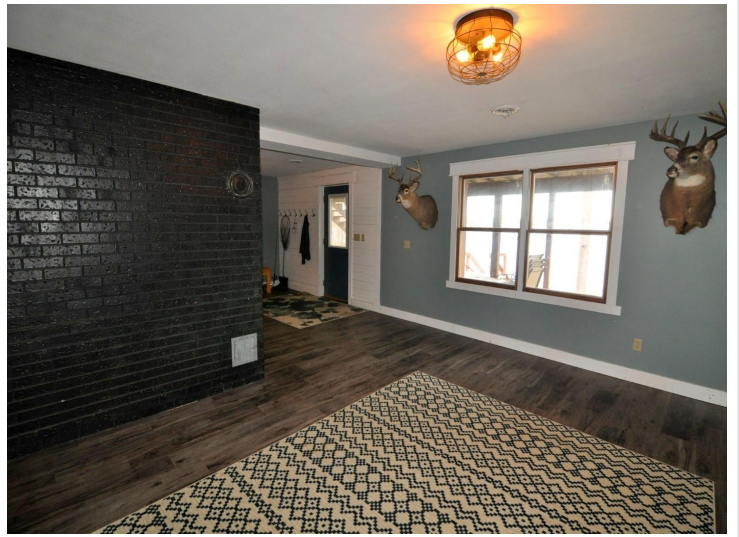
\$699,900
MLS 6625819 Lake Home
23258 County 7
Park Rapids MN 56470



website: www.AffinityRealEstate.com | email: info@affinityrealestate.com | office: 218-237-3333 | fax:218-237-3377

Affinity
REAL ESTATE INC

\$699,900
MLS 6625819 Lake Home
23258 County 7
Park Rapids MN 56470



website: www.AffinityRealEstate.com | email: info@affinityrealestate.com | office: 218-237-3333 | fax:218-237-3377



\$699,900
MLS 6625819 Lake Home
23258 County 7
Park Rapids MN 56470



website: www.AffinityRealEstate.com | email: info@affinityrealestate.com | office: 218-237-3333 | fax:218-237-3377

Affinity
REAL ESTATE INC

\$699,900
MLS 6625819 Lake Home
23258 County 7
Park Rapids MN 56470



website: www.AffinityRealEstate.com | email: info@affinityrealestate.com | office: 218-237-3333 | fax:218-237-3377



\$699,900
MLS 6625819 Lake Home
23258 County 7
Park Rapids MN 56470



website: www.AffinityRealEstate.com | email: info@affinityrealestate.com | office: 218-237-3333 | fax:218-237-3377



\$699,900
MLS 6625819 Lake Home
23258 County 7
Park Rapids MN 56470



website: www.AffinityRealEstate.com | email: info@affinityrealestate.com | office: 218-237-3333 | fax:218-237-3377



\$699,900
MLS 6625819 Lake Home
23258 County 7
Park Rapids MN 56470