



MLS 6626071 Lake Land

\$79,900

Description:

Golden opportunity to own 8 acres in the Lakes Area near Longville already set up with electric hookup and a drilled well. Build your future home/cabin or simply bring your camper and enjoy the Longville Lakes Area.

Additional Details:

Lot Acres	8.05
Lot Dimensions	306x821xIRR
School District	118
Taxes	\$202
Taxes with Assessments	\$202
Tax Year	2024

Additional Features:

Driving Directions:

From Longville go east on HWY 7 about 3 miles, turn right on 28th AVE to sign & property on right



Listed By:
Rusty's Up North Realty

Affinity Real Estate Inc. participates in the Regional Multiple Listing Service of Minnesota, Inc Broker Reciprocity (sm) program, allowing us to display other broker's listings on our website. All properties are subject to prior sale, change or withdrawal.



Call Affinity Real Estate

218-237-3333

info@affinityrealestate.com



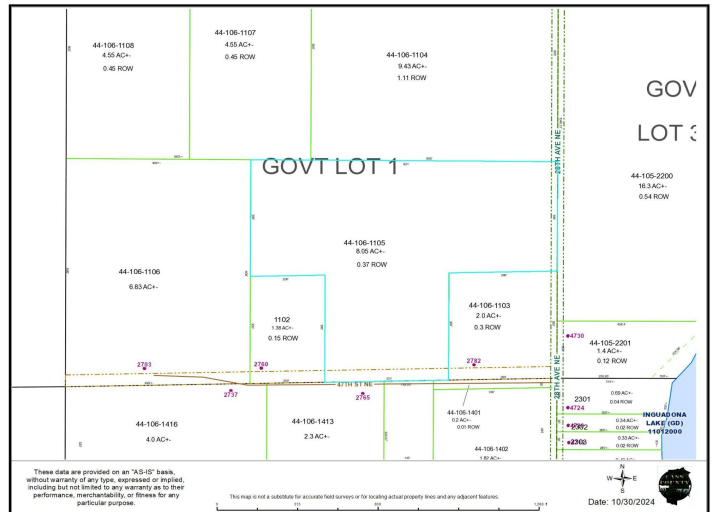
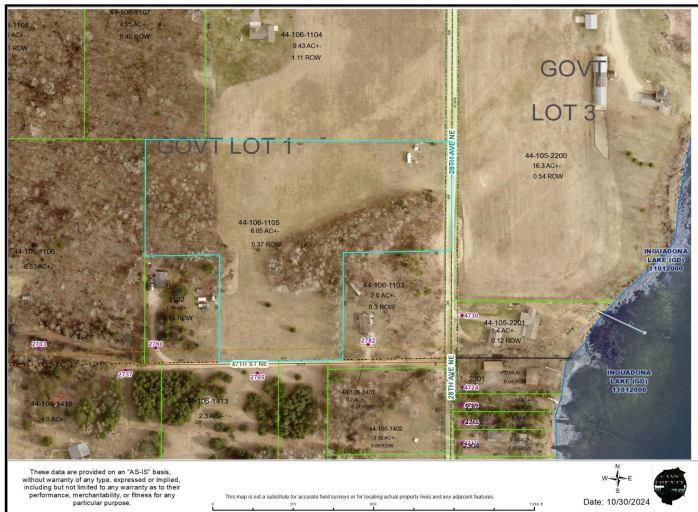
Affinity Real Estate - 600 Park Avenue South - Park Rapids MN 56470



website: www.AffinityRealEstate.com | email: info@affinityrealestate.com | office: 218-237-3333 | fax:218-237-3377



\$79,900
MLS 6626071 Lake Land
xxx 28th Avenue
Longville MN 56655



website: www.AffinityRealEstate.com | email: info@affinityrealestate.com | office: 218-237-3333 | fax: 218-237-3377



\$79,900
 MLS 6626071 Lake Land
 xxx 28th Avenue
 Longville MN 56655